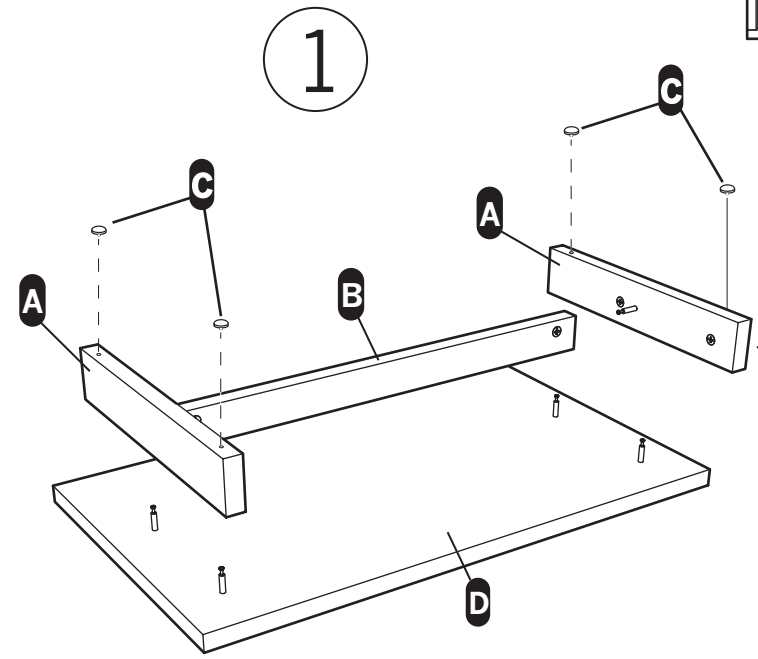
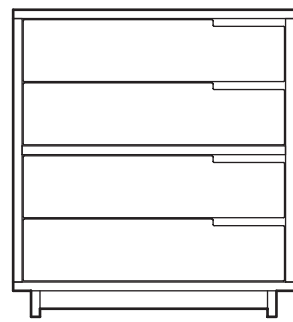


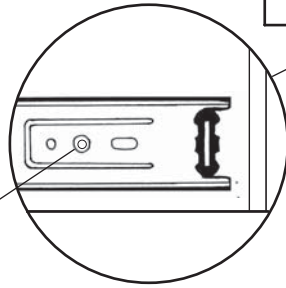
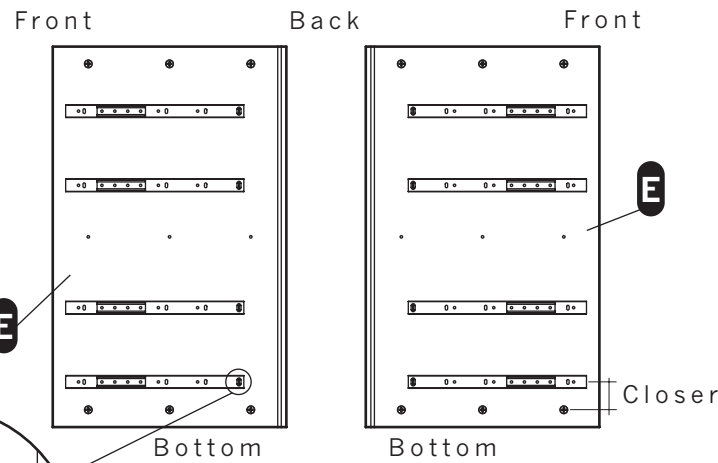
Assembly Notes

MODULICIOUS 3

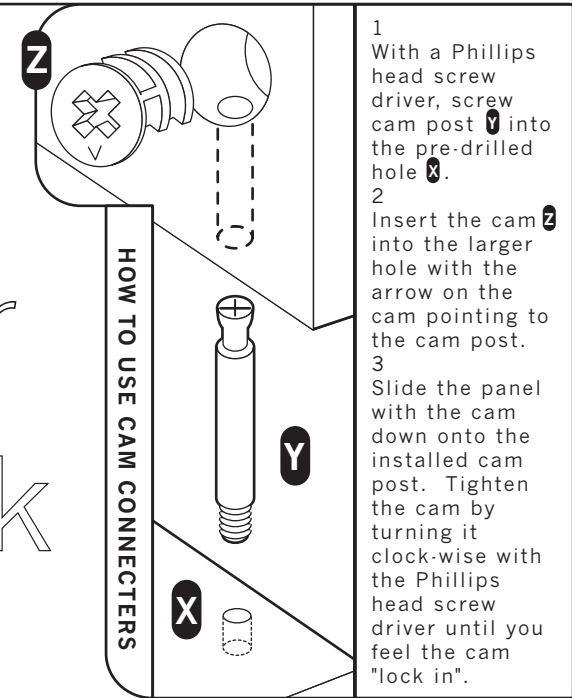


Your first screw goes here

2

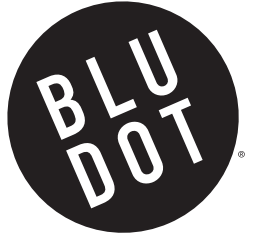
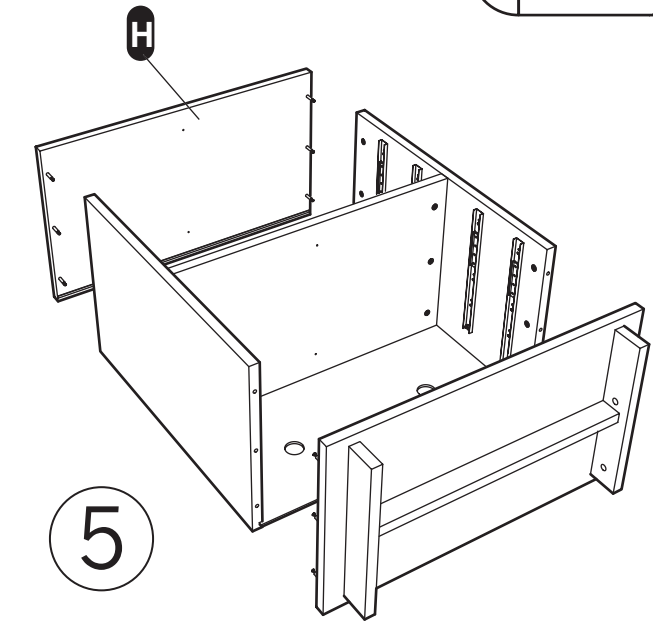
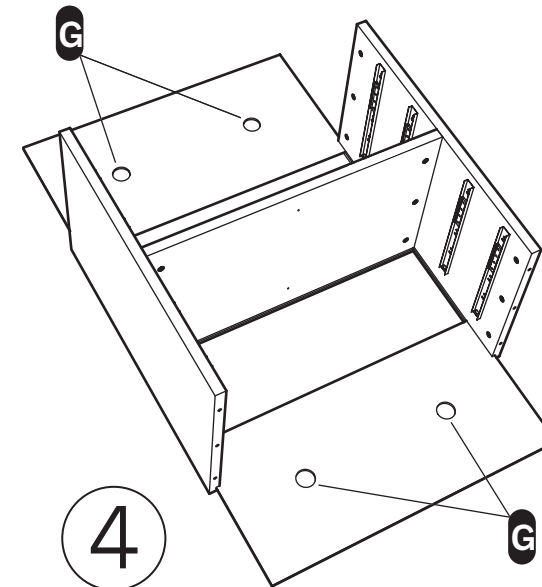
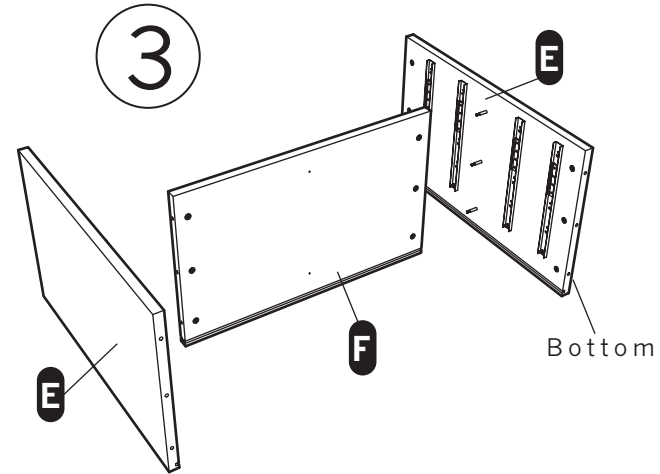


behind
your
back



- 1 With a Phillips head screw driver, screw cam post **Y** into the pre-drilled hole **X**.
- 2 Insert the cam **Z** into the larger hole with the arrow on the cam pointing to the cam post.
- 3 Slide the panel with the cam down onto the installed cam post. Tighten the cam by turning it clock-wise with the Phillips head screw driver until you feel the cam "lock in".

Tie one
hand



Assemble on carpet or protective mat.
Before beginning, familiarize yourself with using cam connectors. (see insert right corner)

- 1 See Sketch 1. Screw the cam post into the small hole on the side of each foot **A**. Place the two cams in the stretcher **B** so that the arrow points towards the end of the stretcher and turn the cams to the right until snug. Now, you know how cams work (a valuable skill). Locate the bottom panel **D**. This panel has holes drilled on both faces (the top panel has holes on only one side). Find the side with the groove. Place this side face down. Now with the other side facing up, screw cam posts into all four holes. Place cams into the four holes on the feet **A**. Attach feet/stretcher assembly to bottom panel by turning cams until snug. Push foot tacks into bottom side of the feet **C**. Turn this whole assembly over so it faces right side up, install six more cam posts and set aside.
- 2 See Sketch 2. Locate the two side panels **E** (the sides have grooves on the back long edge). Lay them with the grooves facing up as shown in sketch 2. Make sure that the row of small holes for the slide attachment is closer to the large cam holes on the edge is oriented towards the bottom. Now it's time to attach the drawer slides to each side panel. Orient the drawer slides as shown in sketch 2, with the black bumpers closest to the groove. Refer to the detail in sketch 2 on how to align the slides with the

- holes in the side panels and attach with the screws provided. Screw cam posts into the three holes in the middle of each side panel, and insert 6 cams into each side panel.
- 3 Locate the shelf. With panels oriented as in Sketch 3, fasten the shelf to one side panel by tightening cams. Attach the other side panel to the shelf and tighten cams. You should now have an "H" shaped assembly. IT IS IMPORTANT TO NOT MOVE THE "H" SHAPED ASSEMBLY UNTIL THE BACK PANELS, TOP AND BOTTOM ARE INSTALLED.
- 4 Install the black grommets **G** into the holes in the white back panels by squeezing them into place. Kinky, No? Slide the two white back panels into grooves as shown in Sketch 4.
- 5 Once they are fully seated, take the bottom assembly that you had set aside and attach it as shown in Sketch 5. Next attach the top **H**. Tighten the cams. Tip the cabinet upright...Now the fun part!
- 6 To install each drawer, pull the ball bearing cartridges on the cabinet slides to the front. Align the drawer mounted slides with the cabinet slides and push the drawer in. The levers on the sides of the drawer slides release the drawer. Well done, captain.

HARDWARE INVENTORY



BLU DOT DESIGN AND MANUFACTURING, INC. copyright 2006.
www.bludot.com / t. 612.782.1844 / f. 612.782.1845