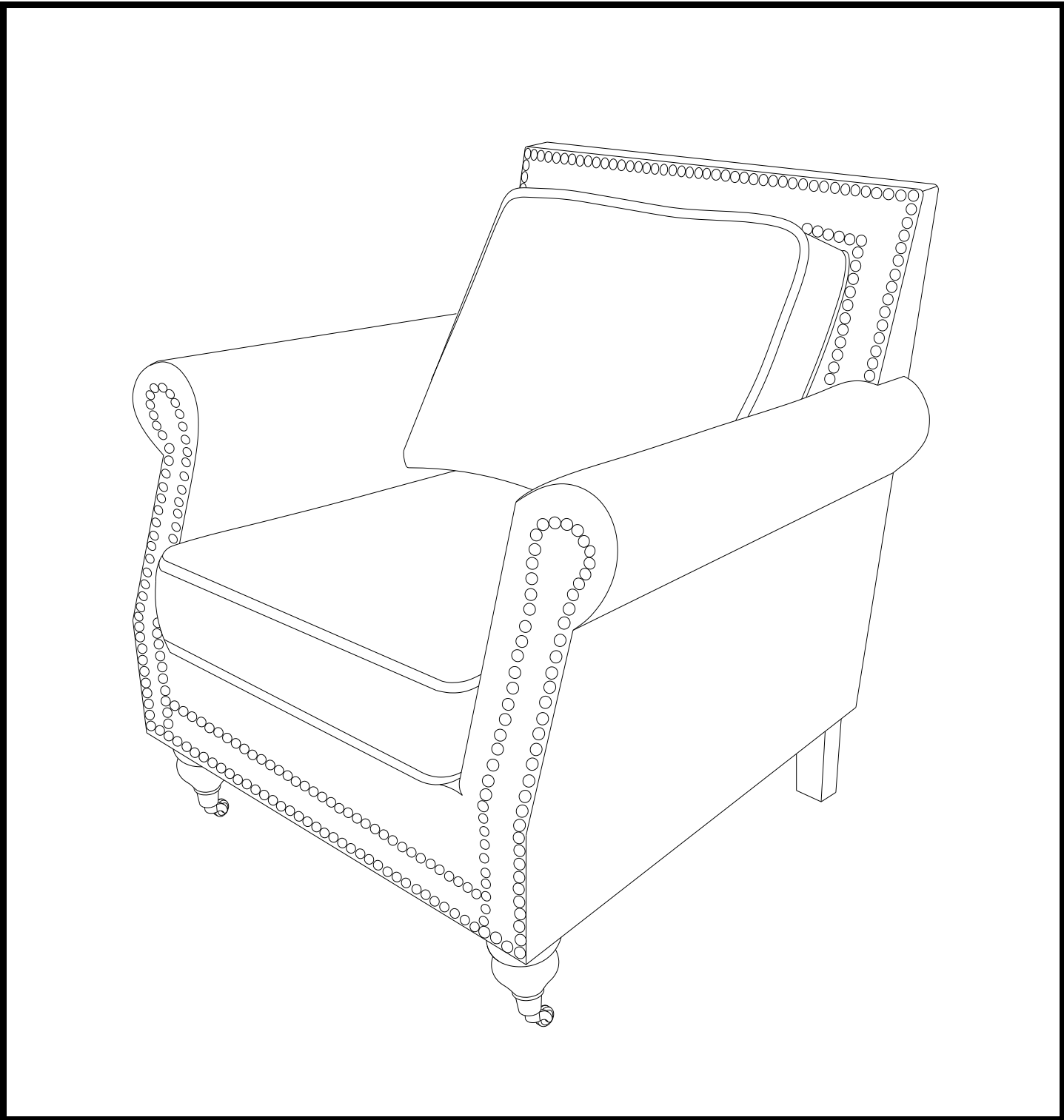




Product Instructions for:

**ZH6431-1IVY CLUB CHAIR / ZH6431-2GY CLUB CHAIR  
ZH6431-3OA CLUB CHAIR**

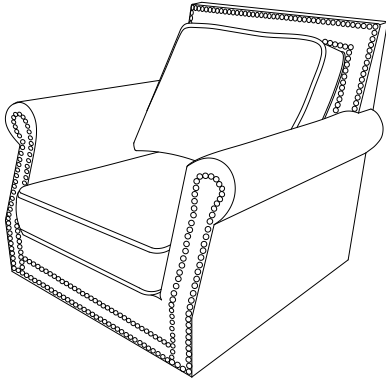


# ZH6431-1IVY CLUB CHAIR / ZH6431-2GY CLUB CHAIR ZH6431-3OA CLUB CHAIR

Before beginning assembly, separate all parts and carefully study the parts diagrams below. Review all parts and hardware before disposing of any packaging. You may receive extra hardware with your unit. Call Customer Service for missing hardware. Please see care and cleaning label attached to bottom of chair.

## Parts List

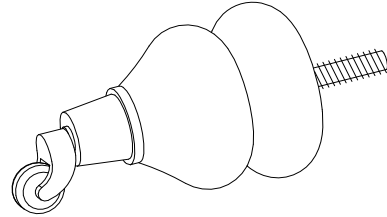
**A**



**Quantity  
of 1**

**Seat**

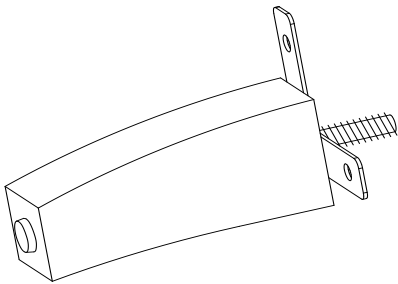
**B**



**Quantity  
of 2**

**Front Legs**

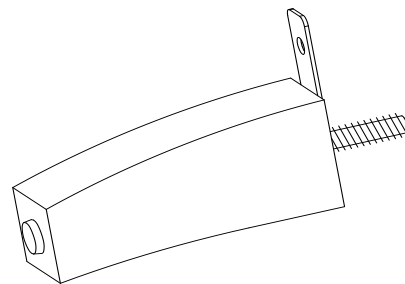
**C**



**Quantity  
of 1**

**Left Back Leg**

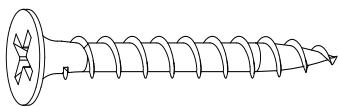
**D**



**Quantity  
of 1**

**Right Back Leg**

**1**

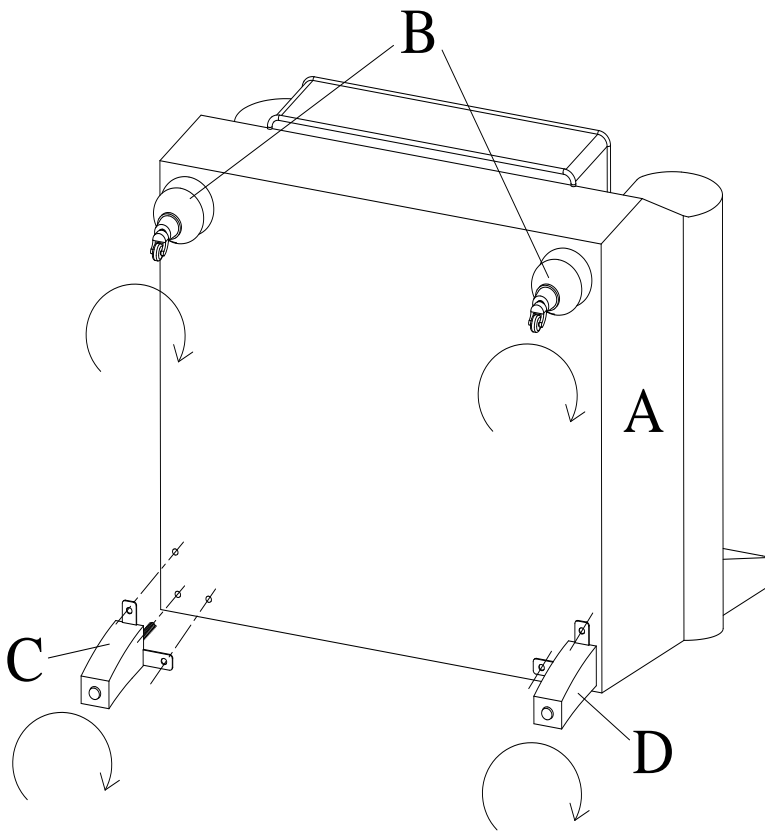


**Quantity  
of 4**

**Screw:1"L**

# ZH6431-1IVY CLUB CHAIR / ZH6431-2GY CLUB CHAIR ZH6431-3OA CLUB CHAIR

## Assembly Instructions



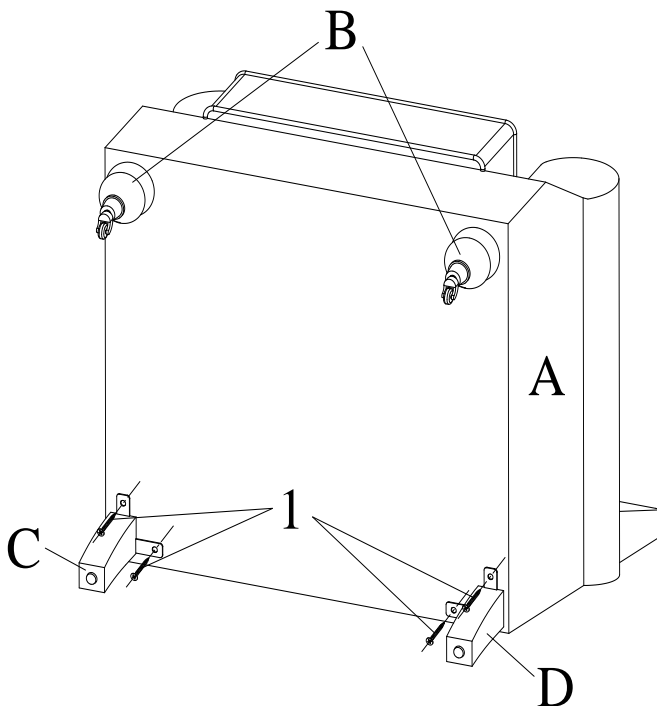
**Figure 1**

Unpack and lay parts on clean, padded surface like carpet or blanket. Check that you have all parts indicated on the front page.

Open the legs box, then take out legs.

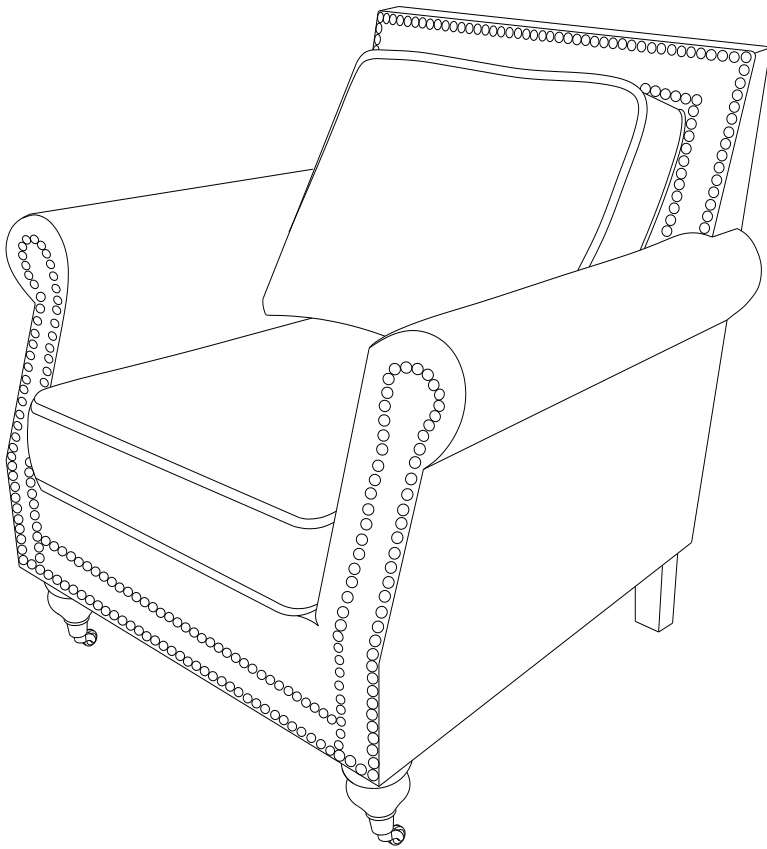
Attach Front Legs (Part B), Left Back Leg (part C) and Right Back Leg (Part D) to the Seat (A) using pre-drilled holes and hand rotating.

Tighten them by hand as shown in Figure 1.



**Figure 2**

Tighten the Legs using Screw (1) and Phillips head screwdriver (not included) as shown Figure 2.



**Figure 3**

Turn over the Chair.  
Now your chair is ready to use!