



MODEL NO.  
P 3560 TD

20090813\_P 3560 TD\_INS\_REV02.ai

**INSTRUCTIONS D'INSTALLATION**

Les appareils doivent être installés par un électricien qualifié. Vérifiez les normes et les codes du bâtiment de votre région. Pour réduire les risques d'électrocution lors de l'installation ou de l'entretien, coupez l'alimentation électrique.

**INSTALLATION INSTRUCTIONS**

Luminaires must be installed by a qualified electrician. Check with local and national codes for proper installation. To prevent electrical shock, disconnect electrical supply before installation or servicing.

**AMPOULE REQUISE**

Incluse.

**REQUIRED BULB**

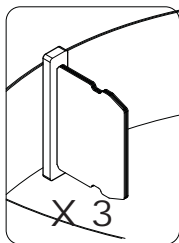
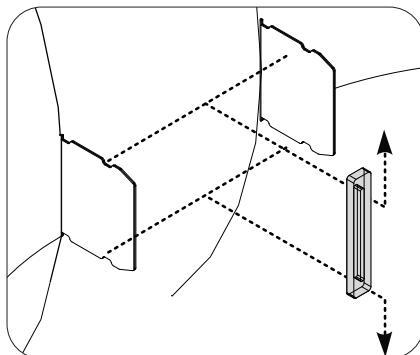
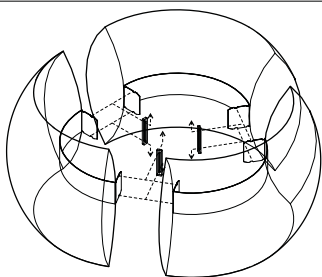
Included.



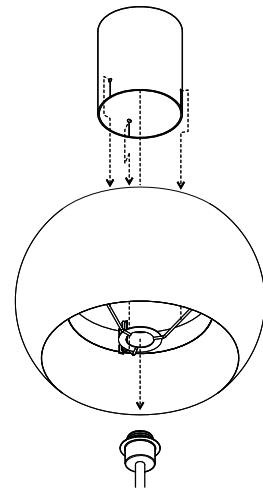
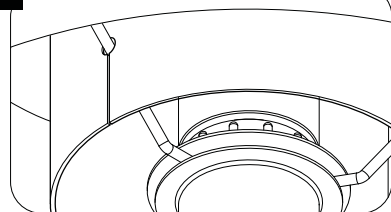
GU24

23W

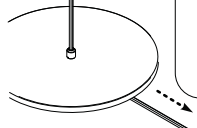
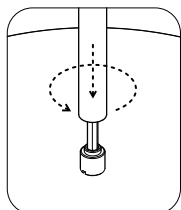
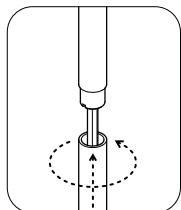
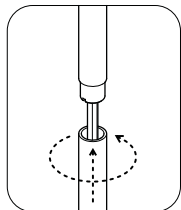
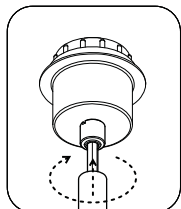
2



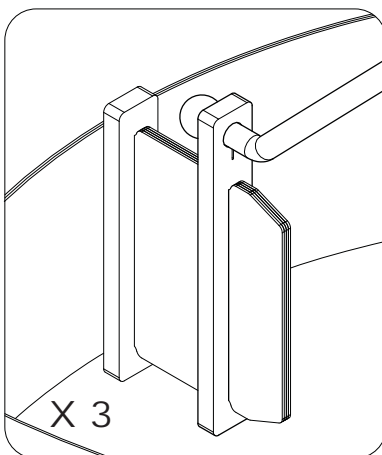
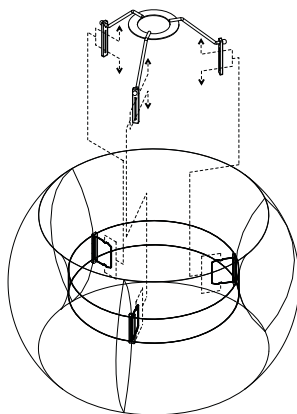
4



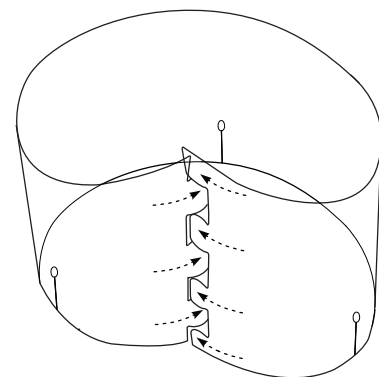
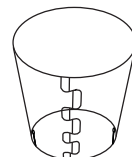
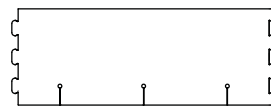
1



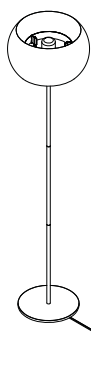
3



5



P 3560 TD



6

