

OUT OF THE BOX ASSEMBLY: (10 minutes or less!)

CAUTION Threads on aluminum fittings are sharp, gloves may be necessary.

1. Using the supplied Teflon tape put 2 layers on threads in a clockwise motion, screw 90 degree street elbow **by itself** into top of pump, one turn past hand tight and aiming toward right arm. (see Fig. 1)
2. Again using the supplied Teflon tape, screw male coupler into street elbow, one turn past hand tight. (see Fig. 2)
3. Using Teflon tape, screw the other male coupler into front opening on pump, one turn past hand tight. (see Fig. 3)
4. Screw in top plug and drain plug hand tight into Pump body (see Fig. 4 and Fig. 5)
5. This should complete the necessary assembly.
6. Double-check to assure that four bolts securing TrunkPump's pedestal to the frame are secure. (see Fig. 6)
7. Double-check that bolt holding triple pulley to TrunkPump's left arm is secure. (see Fig. 7)
8. Double check that set screw (5/32" allen) has single pulley secured to pump shaft. (see Fig. 8)
9. Make sure the belts are on the outer two grooves of the pulley, the middle groove should never have a belt on it. (see Fig. 9)

Tools needed:

Adjustable wrench, 5/32" Allen Wrench, 3/4" socket/ratchet, 9/16" socket/ratchet



FIG. 1



FIG. 2



FIG. 3



FIG. 4

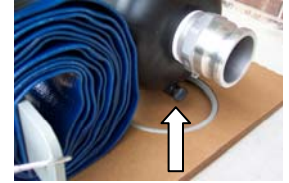


FIG. 5



FIG. 6

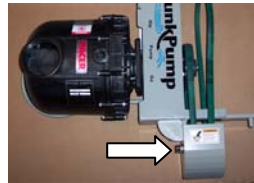


FIG. 7



FIG. 8



FIG. 9

SAFETY WARNING

- Operators of the TrunkPump should read and understand all directions, precautions and warnings in TrunkPump manual and Pacer® Pump manual before operating equipment.
- Avoid putting hands near belts while tractor is running, failure to do so can result in serious injury.
- Keep pulley guard in place during operation.
- Always use a strainer to keep out large debris.
- **DO NOT PUMP FLAMMABLE LIQUIDS.**
- Only engage PTO when pump is level. Engaging PTO when pump is raised or lowered can result in belt damage and loss of performance.

BEFORE YOU START:

- Check to make sure pulleys are securely attached to the unit before operation.
- Be sure pulley guard is securely in place.
- Check belts for wear and replace if needed.
- Make sure transfer belts on TrunkPump are on the outside grooves on the pulley. The middle groove should have no belt on it.
- Attach TrunkPump to front arms of tractor and lock onto holding pins. Install drive belt and engage belt tensioner. (See FIG. 1A)
- Make sure the suction and discharge hoses have their rubber gaskets and are securely attached with the camlock levers. Do not force levers, gradually clamp each side down evenly. If it is difficult, check for trash or a loose gasket.
- For optimal transport, trunk should be attached so that it naturally curves upward, the weight of the strainer will cause the hose to straighten. A downward curving trunk will likely drag on the ground during transport.
- With tractor turned off, place tension on the transfer belt using the tractor's lever.
- Hydraulically raise trunk above parallel for transport. (see FIG. 1B)
- Fill pump with water via the plug on top of the pump. Securely screw plug back in hand tight. (See FIG. 1C)



FIG. 1A



FIG. 1B



FIG. 1C

READY TO PUMP:

- Carefully approach your pumping site.
- Avoid getting pulleys and belts in the water.
- Engage brake, decrease RPMs to idle.
- Uncoil discharge hose and place in area of desired flow.
- Dip trunk into water (You may want to dig a small hole for the strainer to sit in so most of the water is easily pumped out).
- Pump should be level before engaging PTO, failure to do so may cause belt damage or breakage and may cause pump to lose prime. (See FIG. 2B & 2C)
- Engage PTO.
- Slowly increase engine RPMs to about 80% throttle... the pump will begin to prime.
- Using your hand, squeeze the discharge hose near the pump to build up suction, this may take a few moments... (See FIG. 2D)
- If necessary, you can pour some water in the discharge hose and work it towards the pump... this will quickly get the pump primed.
- Maintain a constant flow of water to the suction trunk and keep strainer clean from debris (leaves, twigs, etc.)
- You may idle the engine down to reduce noise. This will also reduce pressure on the discharge hose for increased directional control.



FIG. 2A



FIG. 2B



FIG. 2C



FIG. 2D

FINISHED:

- When finished, disengage PTO. As soon as belts have stopped, fully raise your TrunkPump (failure to do so will result in loss of prime).
- Before rolling up discharge hose, partially unscrew top plug to release pressure. (See Fig. 3A) Roll discharge hose from the end as shown in FIG. 3B. and slide onto arm. Secure with attached rubber strap. Be sure to retighten top plug.
- Leave pumping site and head to next destination.

THE END OF THE DAY:

- Using the drain plug on the bottom of the pump, drain pump after use to remove any solids, silt, sand, etc. (Fig. 3C)
- Hose out with clean water.
- Remove unit from tractor and store in safe place, easily accessible for the next use.



FIG. 3A



FIG. 3B



FIG. 3C

TROUBLESHOOTING GUIDE:

- My TrunkPump won't pump...
 - Are the two drain plugs securely screwed in place?
 - Did you make sure all belts were tensioned and hoses were properly attached complete with gaskets?
 - Make sure you have the correct belt on connected to your tractor, a 5/8" x 46" on most Ventracs and a 1/2" x 42"-45" on older Steiners.
 - Did you engage the PTO immediately after dipping the trunk?
 - Did you fill the unit with water before you attempted pumping?
 - Did you check for any obstructions or clogs in the system?
 - If the pump was not level, water may have drained from the unit, fully raise Trunk Pump and add more water.
- My Trunk is droopy...
 - It may be necessary to hang the trunk in the sun and attach bungee straps to it when not in use to help maintain its curve. It should curve upwards when attached to the unit.
- My TrunkPump doesn't seem as efficient as it used to be...
 - If you have had the pump for a while and it has been pumping abrasive materials, it may necessary to replace the gaskets and/or the impeller and volute (for repair kits, see your local TrunkPump dealer). Installing these parts annually would be a good maintenance practice.

FREQUENTLY ASKED QUESTIONS:

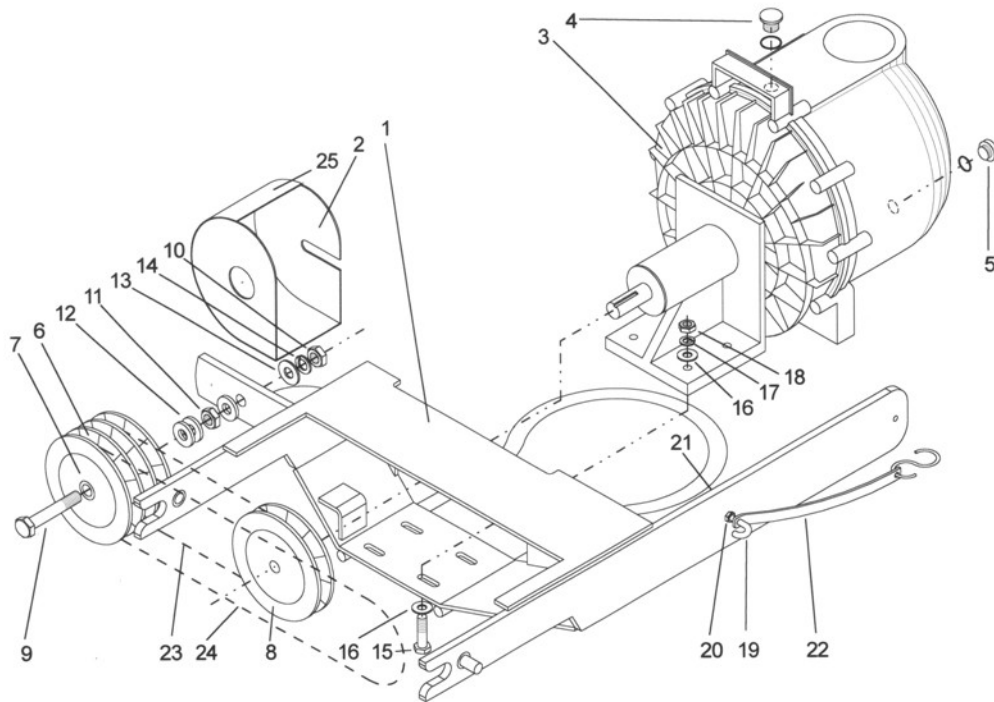
- What kind of hoses and fittings does my TrunkPump use?
 - Suction hose should be a reinforced 3" PVC hose (usually green) with a female camlock fitting and a threaded hose barb. Discharge hose should be a 3" PVC lay flat 3" hose (usually blue) with female camlock fitting and either an open end or male camlock fitting on the other. NOTE: You'll need to find a hose and rubber supply company for these items, hardware stores and home improvement centers normally do not carry these products.
- Can I use longer hoses if I need to?
 - Yes, a longer suction hose can be used so long as you don't exceed the vertical pumping capacity of the pump (25 feet of head). NOTE: A longer suction hose will likely need to be detached for transport. And long discharge hoses can run for hundreds of feet.
- Will the TrunkPump help me with my social life?
 - Helping your social life is beyond the scope of TrunkPump's capabilities. It is, however, an excellent topic of conversation.

Disclaimer: All information contained in this manual is assumed to be accurate at the time of distribution. TrunkPump reserves the right to revise this publication and to make changes in it from time to time without obligation of TrunkPump to notify any person or organization of such revisions or changes.

WARRANTY INFORMATION

TrunkPump warrants its products to be free from defects of material and workmanship for a period of one year (12 months) from date of purchase. Wearable items (Hoses, fittings, strainer(s), gaskets and seals) will carry a limited 3 month (90 days) warranty. The company warrants that its products will be free of defects of material and workmanship for normal use and service. This warranty will not apply or be extended to products subjected to misuse, neglect, accident, or improper installation, or to maintenance of products which have been altered or repaired by anyone except TrunkPump or its authorized representatives. The buyer, or any person receiving such a product during the duration of the warranty, shall contact a TrunkPump dealer as soon as any defect occurs. Contact TrunkPump for the name and address of your nearest dealer.

TrunkPump



TrunkPump Parts List

Part #	description	quantity
1	TrunkPump powder-coated frame	qty 1
2	TrunkPump powder-coated pulley protector	qty 1
3	3" Pacer Pedestal (Cast Iron) Pump (Polyester), EPDM lined volute, stainless hardware	qty 1
4	Top Plug w/ o-ring	qty 1
5	Drain Plug w/ o-ring	qty 1
6	3BK50H - triple groove sheave	qty 1
7	1DHI - 1/2" bore idler bushing w/ 2 mounting bolts	qty 1
8	BK52 - 3/4" bore std keyed	qty 1
9	3" x 1/2" - 13 bolt grade 5	qty 1
10	1/2" - 13 nut	qty 1
11	1/2" - 13 jam nut	qty 1
12	1/2" flat washers (thick)	qty 3
13	1/2" flat washers (thin)	qty 1
14	1/2" lockwasher	qty 1
15	1 1/2" x 3/8" - 16 bolt grade 5	qty 4
16	3/8" flat washer	qty 8
17	3/8" lockwasher	qty 4
18	3/8" - 16 nut	qty 4
19	j-hook	qty 1
20	j-hook nut	qty 1
21	j-hook serrated nut	qty 1
22	9" bungee strap with s-hook	qty 1
23	5/8" x 32"	qty 1
24	5/8" x 46"	qty 1
25	"WARNING, moving parts..." sticker	qty 1