



3-Point Model OWNERS MANUAL

OUT OF THE BOX ASSEMBLY: (10 minutes or less!) (Applies to all TrunkPump Models)

CAUTION Threads on aluminum fittings are sharp, gloves may be necessary.

1. Using the supplied Teflon tape put 2 layers on threads in a clockwise motion, screw 90 degree street elbow **by itself** into top of pump, one turn past hand tight and aiming toward right arm. (see Fig. 1)
2. Again using the supplied Teflon tape, screw male coupler into street elbow, one turn past hand tight. (see Fig. 2)
3. Using Teflon tape, screw the other male coupler into front opening on pump, one turn past hand tight. (see Fig. 3)
4. Screw in top plug and drain plug hand tight into Pump body (see Fig. 4 and Fig. 5)
5. Double-check to assure that four bolts securing TrunkPump's pedestal to the frame are secure.
6. Double check that set screws (5/32" or 1/8" allen) have the pulleys secured to pump shaft and Gearbox Shaft.
7. Double check that Pulley guard is securely in place.

Tools needed:

Adjustable wrench, 5/32" or 1/8" Allen Wrench, 3/8" socket/ratchet, 9/16" socket/ratchet



Fig 1



Fig 2



Fig 3



Fig 4



Fig 5



- Operators of the TrunkPump should read and understand all directions, precautions and warnings in TrunkPump manual and Pacer® Pump manual and Gearbox Maintenance before operating equipment.
 - Avoid putting hands near belt and PTO shaft while tractor is running, failure to do so can result in serious injury.
 - Keep pulley guard in place during operation.
 - Always use a strainer to keep out large debris.
 - **DO NOT PUMP FLAMMABLE LIQUIDS.**
- Only engage PTO when pump is level. Engaging PTO when pump is raised or lowered can result in loss of performance.

BEFORE YOU START:

- Check to make sure pulleys are securely attached to the unit before operation.
- Be sure pulley guard is securely in place.
- Check belt for wear and replace if needed.
- Attach TrunkPump to one lift pin, secure in place with pin. (Figure 1a)
- Attach PTO shaft tractor and TrunkPump. (Figure 1b)
- Attach other lift arm to pin. (Figure 1c)
- Attach top arm to TrunkPump and adjust so the pump is slightly above parallel when in a lowered position. (Figure 1d)
- Make sure the suction and discharge hoses have their rubber gaskets and are securely attached with the camlock levers. Do not force levers, gradually clamp each side down evenly. If it is difficult, check for trash or a loose gasket.
- For optimal transport, trunk should be attached so that it naturally curves upward, the weight of the strainer will cause the hose to straighten. A downward curving trunk will likely drag on the ground during transport.
- Hydraulically raise TrunkPump above parallel for transport. (Figure 1e) As the PTO shaft is short, you may need to establish a set position on your hydraulic arm lever for maximum lift height to avoid having the PTO shaft come apart.
- Fill pump with water via the plug on top of the pump. Securely screw plug back in hand tight. (Fig 1f)



Fig 1a



Fig 1b



Fig 1c



Fig 1d



Fig 1e



Fig 1f

READY TO PUMP:

- Carefully approach your pumping site.
- Engage brake, decrease RPMs to idle.
- Uncoil discharge hose and place in area of desired flow.
- Dip trunk into water.
- Pump should be level or slightly above before engaging PTO, failure to do so may pump to lose prime. (Figure 2a)
- Engage PTO.
- Slowly increase engine RPMs to about 80% throttle... the pump will begin to prime.
- Using your hand, squeeze the discharge hose near the pump to build up suction, this may take a few moments... (Figure 2b)
- If necessary, you can pour some water in the discharge hose and work it towards the pump... this will quickly get the pump primed.
- Maintain a constant flow of water to the suction trunk and keep strainer clean from debris (leaves, twigs, etc.)
- You may idle the engine down to reduce noise. This will also reduce pressure on the discharge hose for increased directional control.



Fig 2a



Fig 2b

FINISHED:

- When finished, disengage PTO and fully raise your TrunkPump (failure to do so will result in loss of prime).
- Before rolling up discharge hose, partially unscrew top plug to release pressure. Roll up discharge hose from the end as and secure with attached rubber strap. Be sure to retighten top plug.
- Leave pumping site and head to next destination.

THE END OF THE DAY:

- Using the drain plug on the bottom of the pump, drain pump after use to remove any solids, silt, sand, etc. (Figure 3)
- Hose out with clean water.
- Remove unit from tractor and store in safe place, easily accessible for the next use.



Fig 3

TROUBLESHOOTING GUIDE:

My TrunkPump won't pump...

- Are the two drain plugs securely screwed in place?
- Did you make sure the belt was tensioned and hoses were properly attached complete with gaskets?
- Did you engage the PTO immediately after dipping the trunk?
- Did you fill the unit with water before you attempted pumping?
- Did you check for any obstructions or clogs in the system?
- If the pump was not level, water may have drained from the unit, raise Trunk Pump and add more water.

My Trunk is droopy...

- It may be necessary to hang the trunk in the sun and attach bungee straps to it when not in use to help maintain its curve. It should curve upwards when attached to the unit.

My TrunkPump doesn't seem as efficient as it used to be...

- If you have had the pump for a while and it has been pumping abrasive materials, it may necessary to replace the gaskets and/or the impeller and volute (for repair kits, *see your local TrunkPump dealer*). Installing these parts annually would be a good maintenance practice.

FREQUENTLY ASKED QUESTIONS:

What kind of **hoses and fittings** does my TrunkPump use?

- *Suction hose should be a reinforced 3" PVC hose (usually green) with a female camlock fitting and a threaded hose barb. Discharge hose should be a 3" PVC lay flat hose (usually blue) with female camlock fitting and either an open end or male camlock fitting on the other. NOTE: You'll need to find a hose and rubber supply company for these items, hardware stores and home improvement centers normally do not carry these products.*

Can I use longer hoses if I need to?

- *Yes, a longer suction hose can be used so long as you don't exceed the vertical pumping capacity of the pump (25 feet of head). NOTE: A longer suction hose will likely need to be detached for transport. And long discharge hoses can run for hundreds of feet.*

Will the TrunkPump help me with my social life?

- *Helping your social life is beyond the scope of TrunkPump's capabilities. It is, however, an excellent topic of conversation.*

What size **belt** should I use on my TrunkPump?

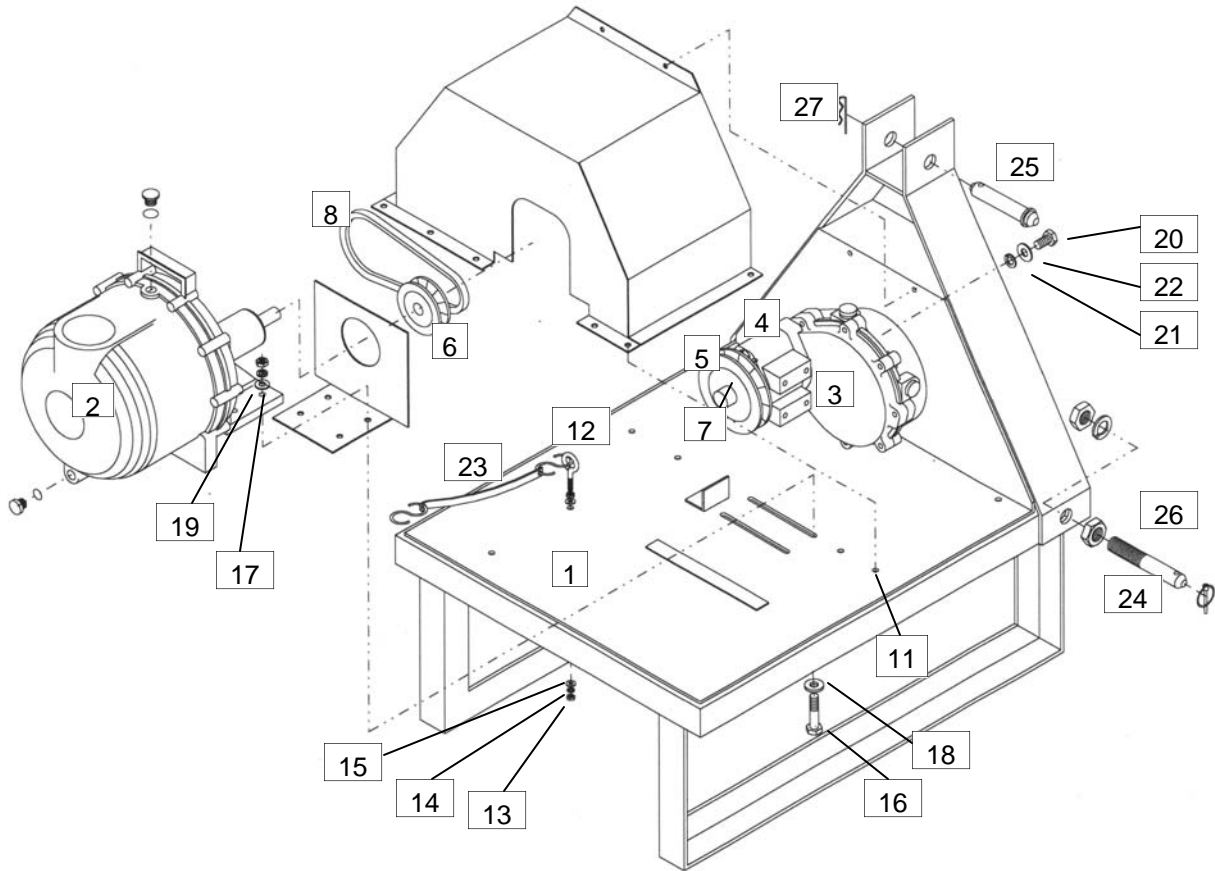
- A 6925, 6926, B22, B23 or similar is recommended for your TrunkPump. 1/2" belts may also be used.

Disclaimer: All information contained in this manual is assumed to be accurate at the time of distribution. TrunkPump reserves the right to revise this publication and to make changes in it from time to time without obligation of TrunkPump to notify any person or organization of such revisions or changes.

WARRANTY INFORMATION

TrunkPump warrants its products to be free from defects of material and workmanship for a period of one year (12 months) from date of purchase. Wearable items (Hoses, fittings, strainer(s), gaskets and seals) will carry a limited 3 month (90 days) warranty. The company warrants that its products will be free of defects of material and workmanship for normal use and service. This warranty will not apply or be extended to products subjected to misuse, neglect, accident, or improper installation, or to maintenance of products which have been altered or repaired by anyone except TrunkPump or its authorized representatives. The buyer, or any person receiving such a product during the duration of the warranty, shall contact a TrunkPump dealer as soon as any defect occurs. Contact TrunkPump for the name and address of your nearest dealer.

TrunkPump



1	Frame (complete unit)	1
2	Pacer Pump	1
3	Omni Gearbox	1
4	OHLA	1
5	BK52 Pulley	1
6	BK30 Pulley	1
7	1/4" Key	1
8	6925 Belt	1
9	3/8"-16 x 3.75" bolt	2
10	3/8"-1/2" sleeve	2
11	1/4"-20 bolt	8
12	Eye Bolt	2
13	1/4"-20 nut	10
14	1/4" washers	20
15	1/4" lockwasher	10
16	3/8"-16 bolt	4
17	3/8"-16 nut	4
18	3/8" washer	10
19	3/8" lockwasher	6
20	Metric bolt	4
21	Metric washer	4
22	Metric Lockwasher	4
23	Bungee Strap w/ s-hooks	1
24	Lift arm pins w/hardware	2
25	toplink pin	1
26	linch pins for lift arm pins	2
27	linch pin for top link	1
28	Safety Stickers	3
29	TrunkPump Stickers	1 set