

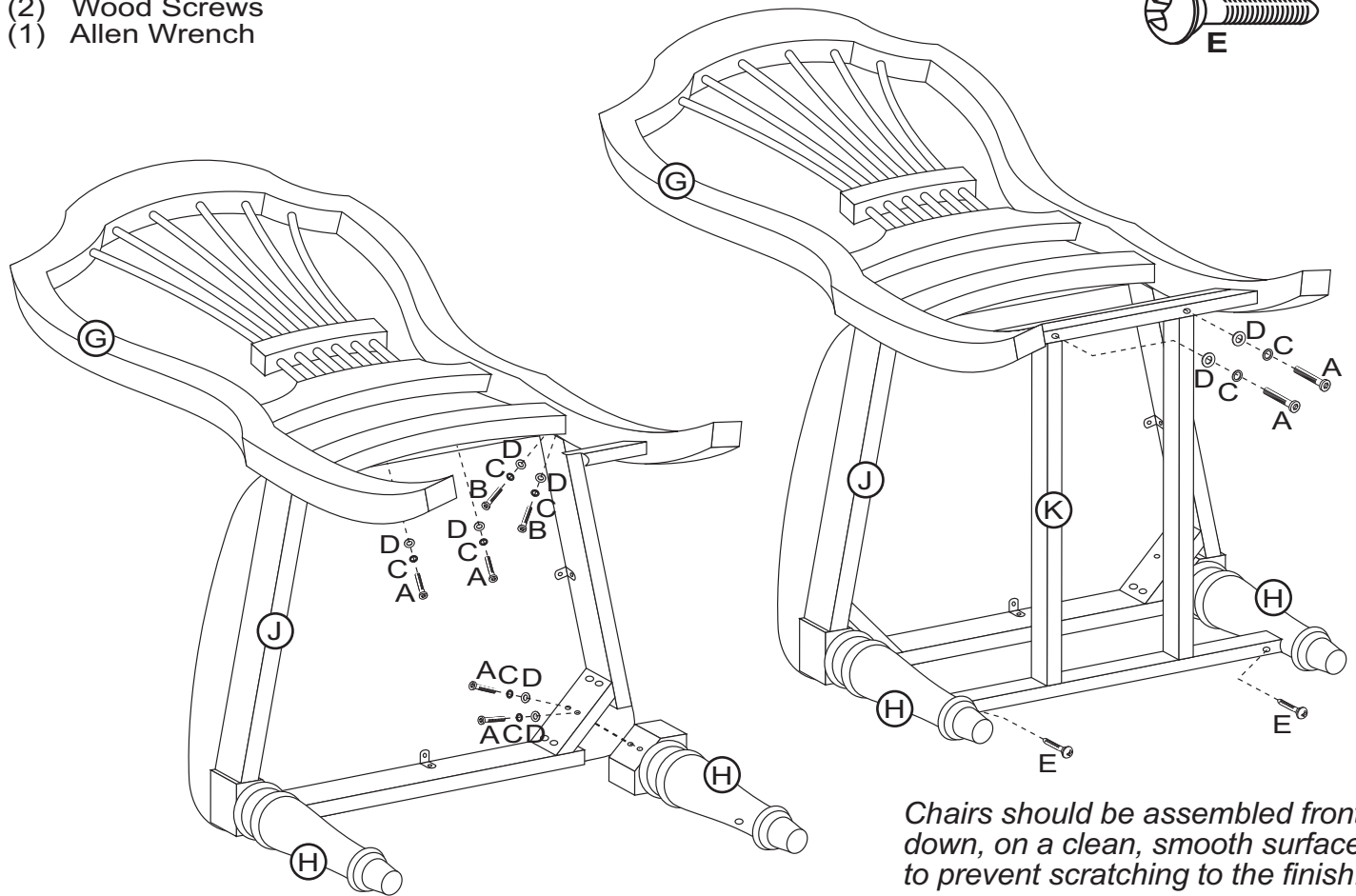
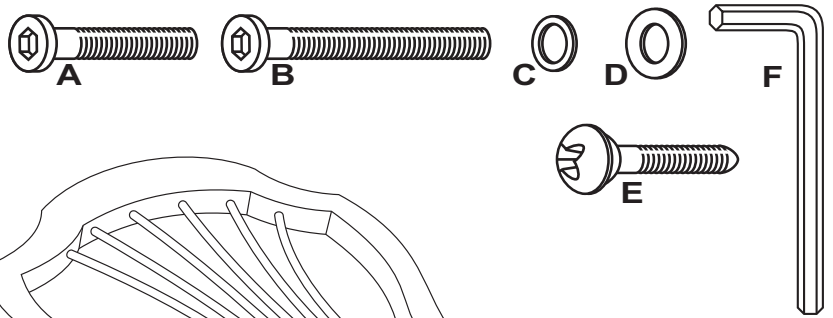
Examine all packaging material for small parts that may have come loose during shipment. Periodic checks are recommended to insure that all components are in proper position, tight and free from damage. Keep this assembly instruction for future reference. Adult assembly required. Online Parts Request: parts.request@hillsdalefurniture.com - Customer Service Phone Number: 502-562-0000

HARDWARE LIST

- A (8) Short Allen Bolts
- B (4) Long Allen Bolts
- C (12) Spring Washers
- D (12) Metal Washers
- E (2) Wood Screws
- F (1) Allen Wrench

PARTS LIST

- G (1) Stool Back
- H (2) Front Legs
- J (1) Seat Base
- K (1) Cross Brace



Chairs should be assembled front down, on a clean, smooth surface to prevent scratching to the finish.

STEP 1

Begin assembly by first attaching the Seat Base (J) to the Stool Back (G), by inserting 2 Short Allen Bolts (A), 2 Spring Washers (C) & 2 Metal Washers (D) in the middle, from the inside. Only tighten bolts by hand.

STEP 2

Next, to secure Seat Base (J) to Stool Back (G) per each rear corner, insert 2 Long Allen Bolts (B), 2 Spring Washers (C) & 2 Metal Washers (D) per each corner. Tighten all bolts from Steps 1 & 2.

STEP 3

Attach each Front Leg (H) to front side of Seat Base (J), using 2 Short Allen Bolts (A), 2 Spring Washers (C) & 2 Metal Washers (D) per each leg. Tighten all bolts.

STEP 4

Finally, attach the Foot Rest (K) to the support on the Stool Back (G) using 2 Short Allen Bolts (A), 2 Spring Washers (C) & 2 Metal Washers (D) to hold in place. Do not tighten bolts. Also, attach the foot rest to each Front Leg (H) using 1 Wood Screw (E) per each leg to hold in place. Tighten all bolts and only tighten screws using a phillips head screwdriver (not included). The assembly is now complete.

CARE & MAINTENANCE: The touch of a soft cloth is all the maintenance the finish will ever need. Please do not use harsh or abrasive cleaners for polishing, as they may cause damage to the finish. Periodic checks are recommended to make sure that all bolts, screws and nuts are securely tightened.