

MODEL: TO30SS-6

TORNADO 30" STAINLESS STEEL 6 SPEED, AUTO CLEAN RANGE HOOD

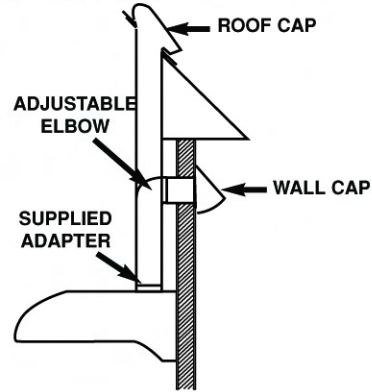
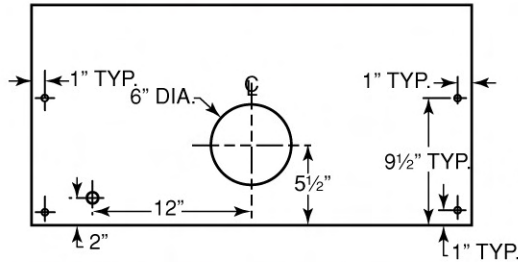
Regular use of the Auto-Clean function can virtually eliminate cooking odors from your kitchen!

Simply press the Auto-Clean button and it automatically cleans the entire cooking fume passage in less than a minute while the residual grease is removed, making your kitchen fresh and inviting. No need to dismantle the range hood and no need to scrub.

1. Professional Heavy-Duty Range Hood for the Serious Cook
2. Exhaust Duct Only
3. 6 Speed / 2 motors; Electronic Switch Control Panel with Auto-Clean and Light Switch (see enclosed sheet for Auto-Clean Instructions)
4. Dimensions: 29 7/8" W X 22" L X 7 7/8" H
5. AUTO CLEAN (hood has a removable fan protection grille and removable oil cup). No Filter Required. The absence of filters enhances air delivery capacity and saves on replacement filter costs.
6. 20 gauge Brushed Stainless Steel, 430 grade
7. Suction capability of 540 CF/m (900 M3/Hr)
8. Teflon coated blades
9. 4.1 Sones (50dB). Ultra Quiet twin motors revolving in opposite directions to reduce noise and increase suction
10. Illumination: 1 x 40W max. appliance bulb included
11. Input power for auto cleaning: 8W
12. Rated motor input power: 100W+100W (Total rated input power: 248W)
13. Voltage: 110~120V/60Hz
14. UL Approved
15. 3 outlet options - top round 6", top square 3 1/4" x 10", or back square 3 1/4"x 10"
16. Ships via UPS/FedEx Ground.
17. Installation by qualified ,licensed technician required
18. Warranty – Five year limited warranty to the original homeowner with proof of purchase. All communication and handling of replacement or defective items will be handled by the dealer. Five year warranty on motor and 5 year warranty on parts [excluding the bulb]. If found defective, items will be replaced at no charge within their warranty time frame. Warranty will be void: 1) In case of improper installation or failure to follow recommended installation instructions. Cutting the power cord plug and connecting the unit directly to electrical line will also void the warranty. 2) Damage due to negligence, misuse, abuse, or accident.

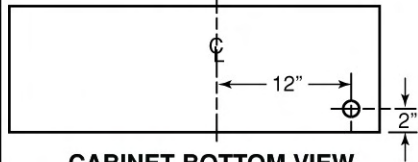
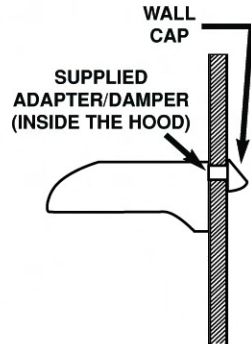
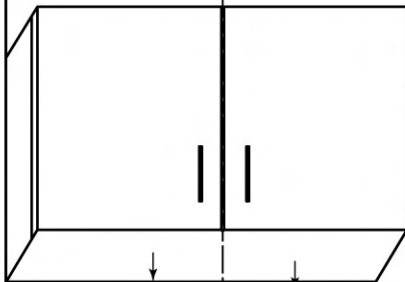
VERTICAL DISCHARGE USING 6" ROUND DUCT

CUTOUT DIMENSIONS CABINET TOP VIEW



HORIZONTAL DISCHARGE USING 3 1/4" X 10" DUCT

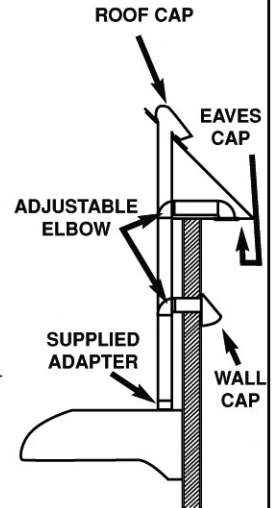
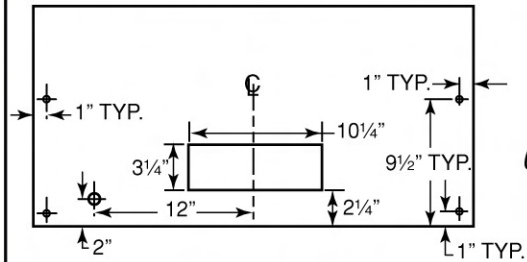
CUTOUT DIMENSIONS



CABINET BOTTOM VIEW

VERTICAL DISCHARGE USING 3 1/4" X 10" DUCT

CUTOUT DIMENSIONS CABINET TOP VIEW



4. Automatic Cleaning Program

Functions:

The range hood must be cleaned using the special range hood cleaner or dish detergent available in the market. After the cleaner is mixed with water (ratio 1: 5), the cleaning mixture can be poured into the cleaner storage unit and stored in the range hood for cleaning later. The cleaning process works using centrifugal force generated by the revolving fan blades at high speed. Cleaning often keeps the inside of the range hood clean and prolongs the life of the range hood.

Operating Instructions:

1. Mix the cleaner and water by pouring water and the cleaner to the marked level on the provided jar. (cleaner : water = 1 : 5)
2. Pour the cleaning mixture in the jar into the hidden cleaner storage unit of the range hood through the water hole as shown in the picture. The volume of the cleaner storage unit is identical to the volume of the jar.
3. If cleaning mixture comes out from the excess water hole down into the oil retainer, it means the cleaner storage unit is full and no more cleaning mixture should be poured into the unit.
4. Press the "Auto Clean" button to start the motors and the cleaner will be discharged automatically to clean the inside of the range hood.
5. The oil retainer should be taken out to remove the dirty oil once the dirty oil reaches the marked line to prevent spillage.

Precautions

1. Only special range hood cleaner or dish detergent available in the market should be used.
2. Follow the water and cleaner mixture ratio marked on the supplied jar (ratio1: 5).
3. Consumers are advised to clean the range hood once a day. It may be cleaned less frequently according to individual needs.
4. When filling the range hood with the cleaning mixture, use only the special jar provided with the range hood and take precautions not to overfill the cleaner storage unit.
5. Check the oil retainer during the cleaning process to prevent oil spillage. Do not allow dirty oil to exceed the marked level.
6. Do not put any other substances into the cleaner compartment unit as this will cause blockage of its injection hole.
7. The cleaner storage unit and the supplied jar are of identical size. The stored cleaning mixture can be used for 2 to 3 times. The cleaner storage unit may be refilled by diluted cleaner mixture every time after use. To prevent overfilling, excess cleaning mixture will be discharged into the oil retainer automatically.