



Carlon SUPERBLUE[®] SuperBlue™ Boxes

Carlon SuperBlue[®] PVC Boxes

Carlon SuperBlue[®] Boxes

combine the features of the hard shell thermoset box and the thermoplastic PVC style box to create a “new” rigid non-metallic wiring box. Molded out of specially formulated thermoplastic material, Carlon SuperBlue[®] boxes are so strong they won't crack or break in extreme environments. So rigid, they resist flexing and hold their shape even in the worst applications. The boxes are designed to nest inside each other

to take up less space on the shelf or in the truck, while still providing the largest wirefill capacity in their class.

- All PVC boxes are listed to UL514C
- All PVC boxes are listed for masonry walls
- All PVC boxes are UL Classified for 2 hr. fire wall and/or fire ceiling
- All PVC boxes meet NEMA OS-2
- All PVC boxes are permissible for use with 90 degree C conductors
- UL File E11461 and R9140

New Work

One-Gang 22.0 Cu.In.



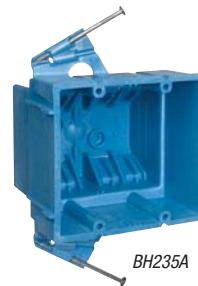
BH122A-UPC



BH122S



CAT. NO.	SIZE CU. IN.	MOUNTING MEANS	DESCRIPTION	DIMENSIONS (IN.)	STD. CTN. QTY.
BH122A-UPC	22.0	Nails	One-gang	3 ⁷ / ₈ L x 2 ³ / ₈ W x 3 ³ / ₄ D	100
BH122S	22.0	Screws	One-gang	3 ⁷ / ₈ L x 2 ³ / ₈ W x 3 ³ / ₄ D	100



BH235A



BH235S



Two-Gang 35.0 Cu.In.

CAT. NO.	SIZE CU. IN.	MOUNTING MEANS	DESCRIPTION	DIMENSIONS (IN.)	STD. CTN. QTY.
BH235A	35.0	Nails	Two-gang; integral clamps	3 ⁷ / ₈ L x 4 ¹ / ₈ W x 3 ¹ / ₂ D	48
BH235S	35.0	Screws	Two-gang; integral clamps	3 ⁷ / ₈ L x 4 ¹ / ₈ W x 3 ¹ / ₂ D	48

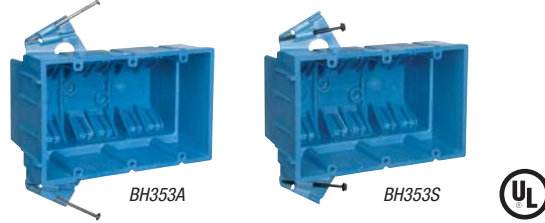


Carlson SUPERBLUE[®] SuperBlue™ Boxes



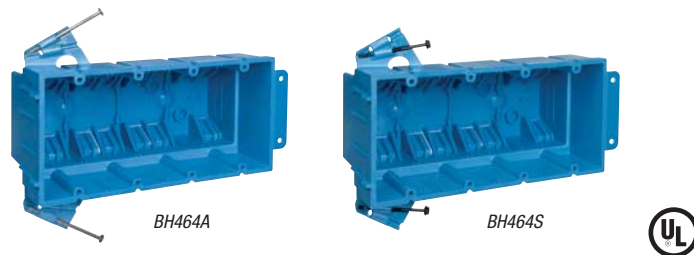
New Work

Three-Gang 53 Cu. In.



CAT. NO.	SIZE CU. IN.	MOUNTING MEANS	DESCRIPTION	DIMENSIONS (IN.)	STD. CTN. QTY.
BH353A	53.0	Nails	Three-gang; integral clamps	5 ⁷ / ₈ L x 3 ³ / ₄ W x 3 ¹ / ₂ D	24
BH353S	53.0	Screws	Three-gang; integral clamps	5 ⁷ / ₈ L x 3 ³ / ₄ W x 3 ¹ / ₂ D	24

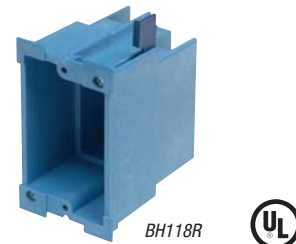
Four-Gang 64 Cu. In.



CAT. NO.	SIZE CU. IN.	MOUNTING MEANS	DESCRIPTION	DIMENSIONS (IN.)	STD. CTN. QTY.
BH464A	64.0	Nails and molded bracket	Four-gang; integral clamps	7 ³ / ₄ L x 3 ⁷ / ₈ W x 3 ¹ / ₂ D	24
BH464S	64.0	Screws and molded bracket	Four-gang; integral clamps	7 ³ / ₄ L x 3 ⁷ / ₈ W x 3 ¹ / ₂ D	24

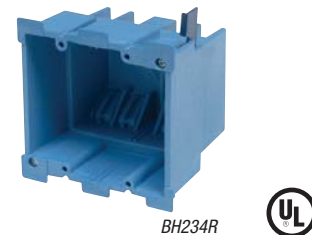
Old Work

One-Gang 18.0 Cu. In.



CAT. NO.	SIZE CU. IN.	MOUNTING MEANS	DESCRIPTION	DIMENSIONS (IN.)	STD. CTN. QTY.
BH118R	18.0	Mounting ears & swing clamps	One-gang; integral clamps	3 ⁷ / ₈ L x 2 ³ / ₈ W x 3 ⁵ / ₈ D	36

Two-Gang 34.0 Cu. In.



CAT. NO.	SIZE CU. IN.	MOUNTING MEANS	DESCRIPTION	DIMENSIONS (IN.)	STD. CTN. QTY.
BH234R	34.0	Mounting ears & swing clamps	Two-gang; integral clamps	3 ⁷ / ₈ L x 2 ³ / ₈ W x 3 ⁵ / ₈ D	18

Carlson SuperBlue[®] PVC Boxes



United States
Tel: 901.252.8000
Fax: 901.252.1354

Technical Services
Tel: 888.862.3289

Thomas & Betts

www.tnb.com



Carlson SUPERBLUE[®] SuperBlue™ Boxes

Carlson SuperBlue[®] PVC Boxes

Ceiling Boxes



BH525A-UPC



BH525P



3/0-4/0 Combination 25.0 Cu.In.

CAT. NO.	SIZE CU. IN.	MOUNTING MEANS	DESCRIPTION	DIMENSIONS (IN.)	STD. CTN. QTY.
• BH525A-UPC	25.0	Nails	Integral clamps	4 Dia. x 3.00 D	48
• BH525P	25.0	Nails	Integral clamps; ground lug and screw attached	4 Dia. x 3.00 D	24

• Listed for fixture support up to 50 lbs.



BH525L



Fan Box 25.0 Cu. In.

CAT. NO.	SIZE CU. IN.	MOUNTING MEANS	DESCRIPTION	DIMENSIONS (IN.)	STD. CTN. QTY.
• BH525L	25.0	L bracket and nails	Integral clamps	4 Dia. x 3.00 D	24
• BH525LP	25.0	L bracket and nails	Integral clamps; ground lug and screw attached	4 Dia. x 3.00 D	24

• Listed for fan support up to 35 lbs. and fixture support up to 50 lbs.



BH525H



Ceiling Box with Hanger Bar 25.0 Cu. In.

CAT. NO.	SIZE CU. IN.	MOUNTING MEANS	DESCRIPTION	DIMENSIONS (IN.)	STD. CTN. QTY.
• BH525H	25.0	Hanger bar 11 1/2" to 18 1/2"	Integral clamps	4 Dia. x 3.00 D	20
• BH525HP	25.0	Hanger bar 11 1/2" to 18 1/2"	Integral clamps; ground lug and screw attached	4 Dia. x 3.00 D	20

• Listed for fixture support up to 50 lbs.



BH614R



BH614RP



3 1/2" 14.5 Cu. In.

CAT. NO.	SIZE CU. IN.	MOUNTING MEANS	DESCRIPTION	DIMENSIONS (IN.)	STD. CTN. QTY.
•† BH614R	14.5	Base, ears & snap-in bracket	Round old/new work box	3 1/2 Dia. x 2 3/8 D	24
•† BH614RP	14.5	Base, ears & snap-in bracket	Round old/new work box w/ground lug	3 1/2 Dia. x 2 3/8 D	24

• Listed for wall fixture support up to 10 lbs.

† Tighten screws to to 10 in.-lbs.

