

OEM
NON-SLIP TAPE SOLUTIONS



INCOM
MANUFACTURING GROUP
TOP TAPE & LABEL

ANTI-SLIP SAFETY GRIT ROLLS



Reduce the risk of serious injuries and greatly enhance the safety and performance of your product surfaces. Our “Gator Grit” and “True-Grit” series of aluminum oxide based non-skid self adhesive products offer a quick and easy way to offer long term slip protection to most any surface. Both products employ technology that makes them waterproof. A key feature of both products is that they employ a temporarily repositionable adhesive system. This allows the parts to be removed and re-applied should they be installed incorrectly. After the adhesive has fully cured (usually 24 hours) the tape will be permanently bonded.

Premium Grade “Gator Grit”: Our premium grade grit tape offers an excellent product for outdoor applications where high traffic, water and chemicals will be present. This tape has an extra bonding layer that increases wear and chemical resistance. The grit surface is an aluminum oxide (60-grit).

Contractor Grade “True Grit”: The contractor grade is the best choice for most common non-skid applications. It offers an excellent level of performance and value. The grit surface is an aluminum oxide (46-grit).





ANTI-SLIP SAFETY GRIT DIECUT SHAPES



Looking for a custom fit look for your product.? We offer all grades and series of our non-skid grit tape products in die cut cleats to suit any shape or recessed area. All non-skid grit products are made with a long lasting aluminum oxide grit and durable adhesive system that is waterproof. Be creative and have your company name or logo die cut into your grit panels, combine special shapes with a custom printed option for a high-end unique look. These products all offer a temporarily repositionable adhesive, that forms a permanent bond after 24 hours. Excellent outdoor weatherability.

Premium Grade “Gator Grit”: Our premium grade grit tape offers an excellent product for outdoor applications where high traffic, water and chemicals will be present. This tape has an extra bonding layer that increases wear and chemical resistance. The grit surface is an aluminum oxide (60-grit).

Contractor Grade “True Grit”: The contractor grade is the best choice for most common non-skid applications. It offers an excellent level of performance and value. The grit surface is an aluminum oxide (46-grit).



TEXTURED RESILIENT VINYL NON-SLIP



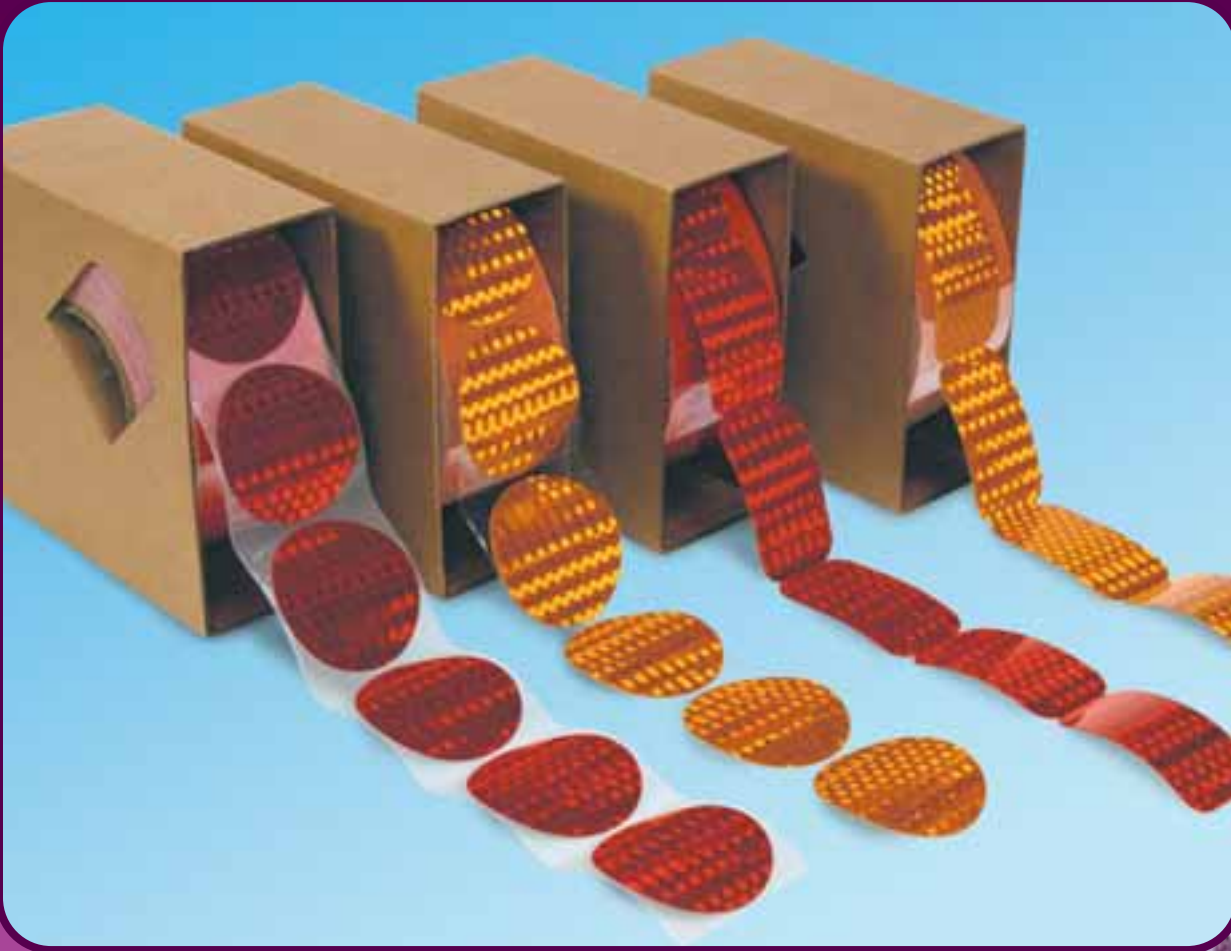
Want to add a slip resistant surface, but do not want the feel of sandpaper.? Try our textured embossed PVC slip resistant self adhesive sheeting. These products are made from a durable embossed PVC film with an aggressive waterproof adhesive that make these products an excellent choice for wet environments. The non-abrasive surface makes this product more comfortable for bare skin contact, and a great for applications where pieces of loose grit would cause damage to the surrounding area. Products have a temporarily repositionable adhesive to allow for corrections, yet forms a permanent bond within 24 hours.

Our complete range of textured PVC sheeting is available in standard range of colors (grey, white, black and clear) with custom color matches available. We supply this product in slit rolls or custom die cut shapes.





HIGH INTENSITY REFLECTIVE DELINEATORS



Use our SAE A and DOT approved reflex reflectors to reduce cost in your reflector application program. These reflectors are easy to install, and save time with their quick peel & stick application. Reflectors can not be broken by impact with road debris, and can not be knocked off, ensuring that your vehicle remains in compliance. Our reflectors feature highly reflective prismatic lenses in a durable transparent resin. The backing is coated with a permanent aggressive pressure sensitive adhesive with a clear poly easy remove liner.

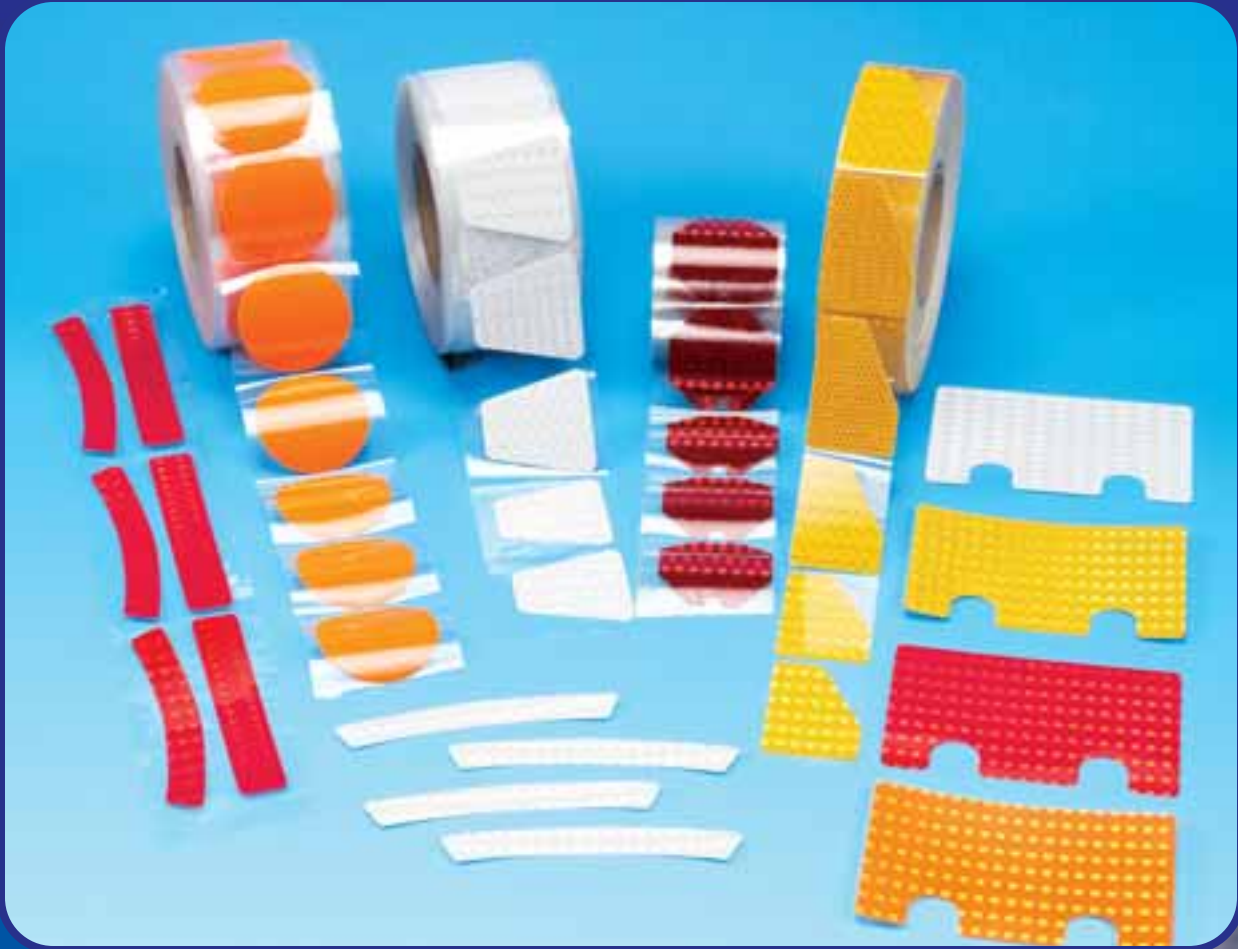
This same material can also be die cut into custom shapes to meet your product shape or fit into recessed areas.

Meets SAE J594.





HIGH INTENSITY REFLECTIVE DIE CUTS



Looking to increase the visibility and safety of your product.? We offer a huge range of reflective sheeting products to meet your reflector specifications and budget. Our range includes everything from ultra high reflectivity products through to value priced commercial grade reflective sheeting.

All our reflective sheeting products are a great choice for both indoor and outdoor applications and available in a wide range of color and custom printing and die cut options. We are able to supply your shapes in rolls for easier application, and sheets for smaller run volumes.

Choose from any of our reflective series of sheeting including:

- Commercial Grade
- Engineer Grade (ASTM D-4956 Type 1)
- High Intensity Grade (ASTM D-4956 Type III/IV)
- Prismatic Grade (ASTM D-4956 Type VIII)
- Conspicuity Grade (DOT-C2)



HIGH INTENSITY & PRISMATIC REFLECTIVE SHEETING



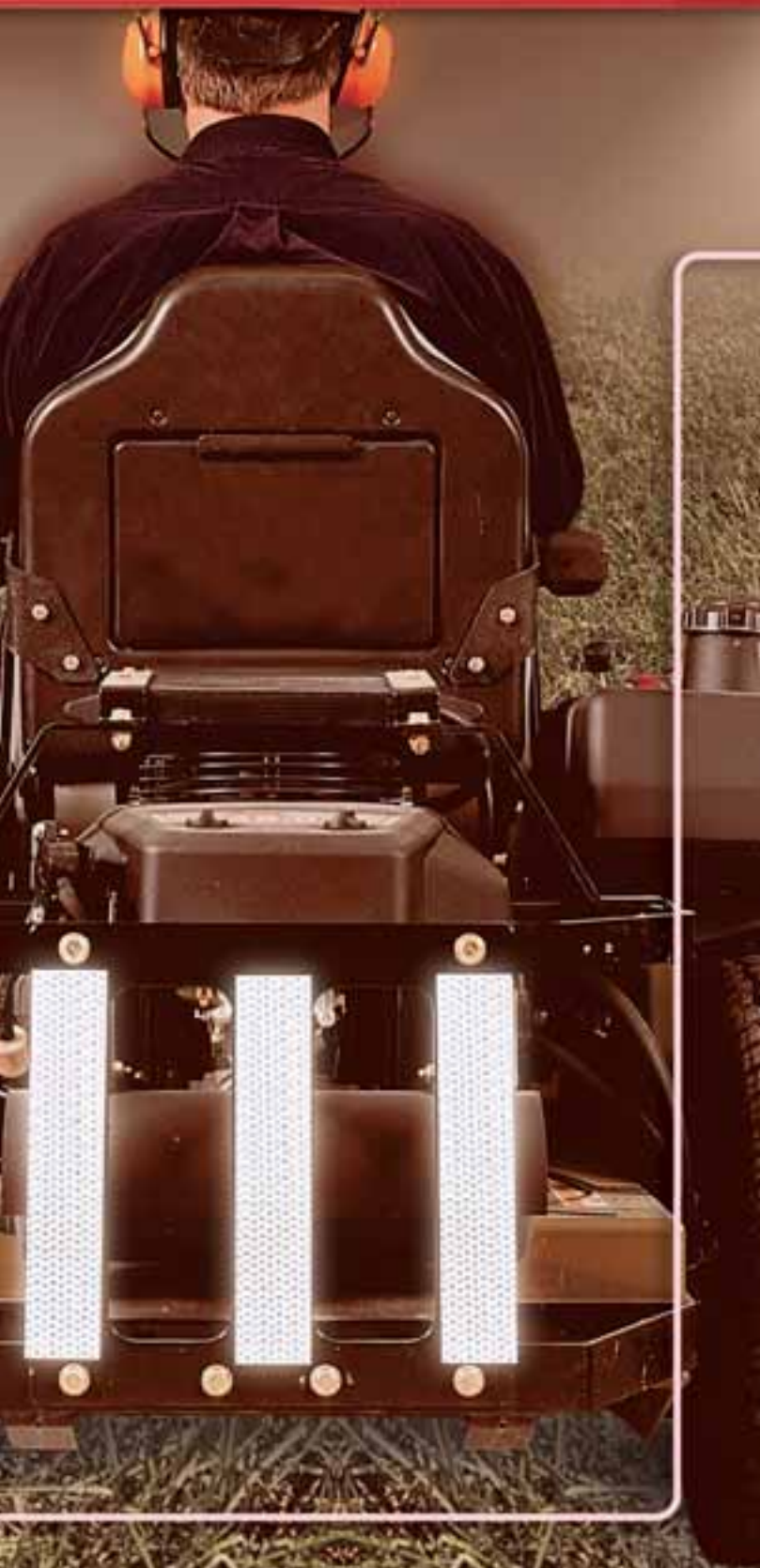
Choose one of our Highly Reflective Sheeting options for marking anything that requires a high level of night time visibility, coupled with a long term life cycle. These sheetings have an excellent entrance angularity and high intensity micro-prismatic surface, couple with an aggressive adhesive system that can be matched to most OEM style applications.

High Intensity Sheeting: This is our most popular grade of High Intensity series products. It offers excellent reflectivity values, can be applied to both rigid and semi-flexible surfaces and has a very high tack adhesive system. This sheeting is available in a wide array of colors and can be slit or die cut to your specific needs. Meets ASTM D-4956 Type III/IV.

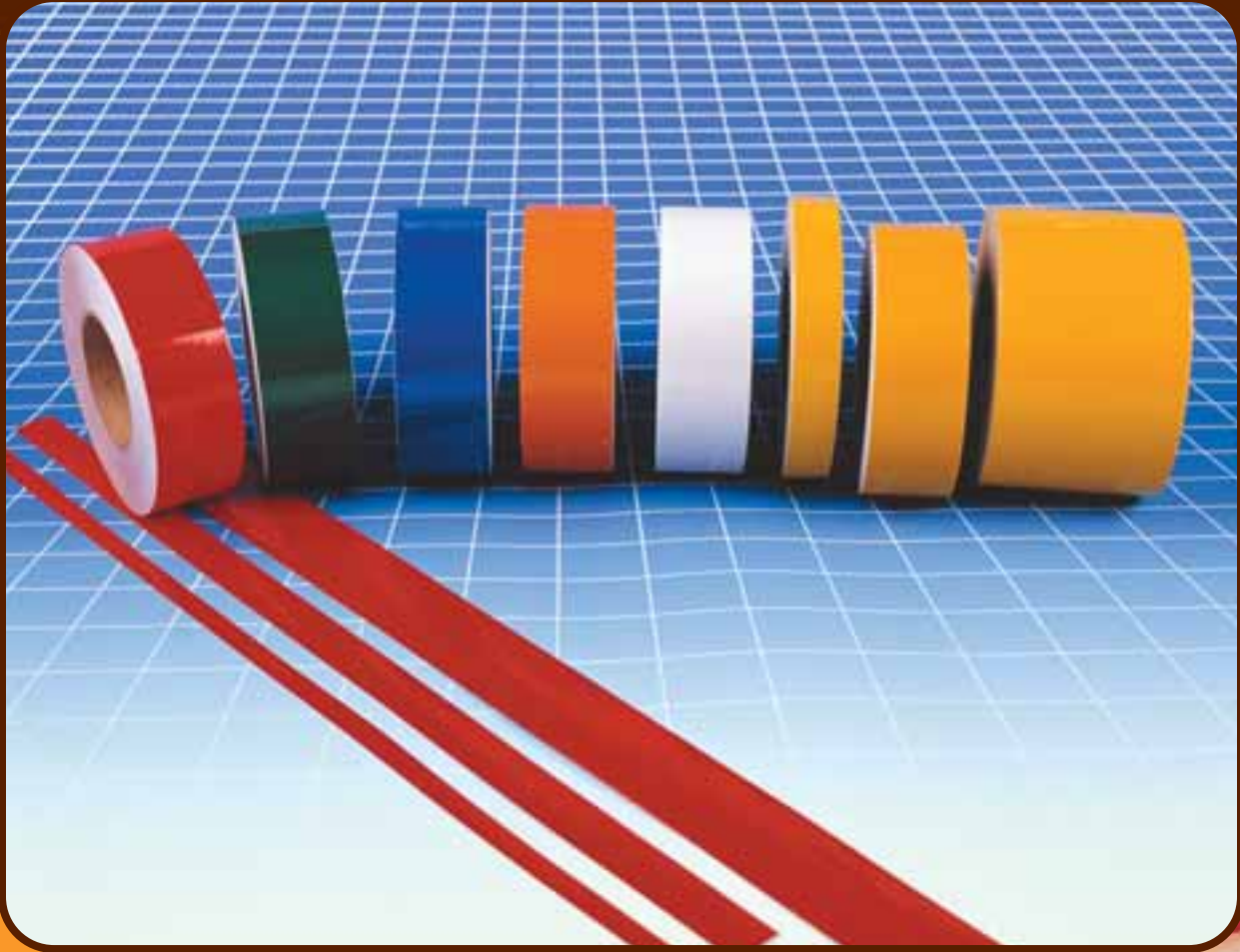
Prismatic Reflective Sheeting: This sheeting offers the highest levels of reflectivity for applications requiring the best levels of night time visibility. This series will be seen from the greatest distance away to give the most reaction time. Product may be used on both rigid and semi-flexible applications and has a very high tack adhesive system. Meets ASTM D-4956 Type VIII.

Conspicuity Tape: We offer a complete range of Conspicuity Grade DOT-C2 sheeting, including a 3-year value priced series and a 7-year long term product line. All products meet DOT-C2, and NHTSA (49 CFR 571) and are available in a wide assortment of options.





ENGINEER GRADE REFLECTIVE SHEETING



Our most popular series of reflective sheeting films. The engineer grade products offer increased night time visibility and offer a decorative look for day time viewing. This level of sheeting is a great compromise of reflectivity level and value.

Our engineer products are available in three grades to meet your specific application and budget. All grades can be slit, die cut or print to your specific needs.

Engineer Grade (Rigid): This is our best selling series of reflective sheeting. This product is intended for applications to rigid surfaces, comes in a wide range of colors, and offers an outdoor durability of 7-years. Meets ASTM D-4956 Type I.

Engineer Grade (Flexible): Our flexible series of engineer grade reflective is intended for semi-flexible surfaces, this would include vehicle graphics and surfaces that have some flex during their usage. The series come in a wide range of colors and offers a 7-year outdoor durability. Meets ASTM D-4956 Type I.

Commercial Grade: The commercial grade products does not meet any specific government standards, and has a slightly lower reflectivity rating than the other two engineer products. This product is intended for application only to rigid surfaces, and has a 2-year outdoor life span.







INCOM
MANUFACTURING GROUP
TOP TAPE & LABEL

6311 Inducon Corporate Drive
Sanborn, NY. 14132

1259 Sandhill Drive
Ancaster, Ontario L9G 4V5

TOLL FREE: 800 263 6238
FAX: 800 263 2945

e-mail:sales@incom-group.com • website:www.incomdirect.com