

# Introducing Napoleon's Dream™ - Direct Vent Gas Fireplace

*The  
Dream™*



  
**NAPOLEON**  
QUALITY FIREPLACES  
*Award Winning Products*

ADVANCED FLAME  
TECHNOLOGY  
ENERGY  
EFFICIENT

Dream™ Options

## The Dream™ Direct Vent Gas Fireplace

It's everything you dreamed of and more! Napoleon® is proud to introduce the BGD90 Dream™ direct vent gas fireplace to our 2007 line up! With it's astounding design, the Dream™ is the ideal fireplace to make a statement in any home, ideal for a great room, bedroom, ski lodge, lobby or castle. This colossal fireplace has the phenomenal viewing area of 16 square feet, sure to capture anyone's attention who may enter the room. Napoleon® is extremely pleased to offer such an extraordinary fireplace to it's discriminating customers, who want to set themselves apart.

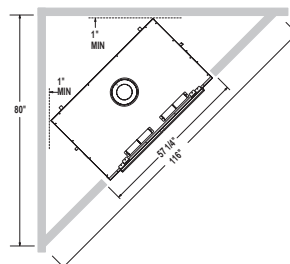
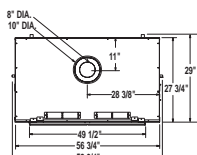
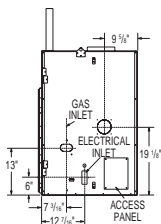
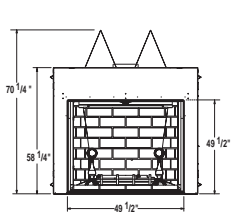
### Standard Features

- Up to 50,000 BTU's
- An unbelievable 16 sq. ft. viewing area - One of the largest in the industry
- Traditional clean face masonry design and feel
- 50% flame/heat adjustment for maximum comfort and efficiency
- Double burner system showcasing two incredible levels of intense YELLOW DANCING FLAMES®
- Exclusive PHAZER® logs with a natural wood appearance
- Millivolt system ensures reliable use even during power failures
- 100% SAFE GUARD™ gas control system automatically and quickly shuts off the gas supply for your peace of mind
- Zero clearance to combustibles
- Exclusive Napoleon® Dual Night Light™ system illuminates the logs and firebox while adding a warm glow to the room when the fireplace is off
- Convenient hand-held thermostatic remote, controlling blower, flame intensity, temperature and Night Light™
- Exquisite Sandstone Herringbone decorative brick panels
- Solid cast iron decorative andirons in painted black standard
- Controls are concealed from view but easily accessible
- Available as a natural gas or propane unit
- Dependable President's Limited Lifetime Warranty

The  
*Dream™*

### Optional Accessories

- Optional rectangular wrought iron decorative door
- Optional remote blower kit for WHISPER QUIET™ operation
- Optional country crane and hearth pot



Dual Night Light™



Optional country crane and hearth pot



- 103 Miller Drive, Crittenden, Kentucky, USA 41030
- 24 Napoleon Road, Barrie, Ontario, Canada L4M 4Y8
- 7200 Trans Canada Highway, Montreal, Quebec, Canada H4T 1A3

Tel: 705-721-1212 Fax: 705-722-6031

www.napoleonfireplaces.com • www.fireplacedesignstudio.com



Printed in Canada  
ADBR557 02/07

Remote Control

