

CRYSTORAMA

1958
 95 Cantiague Rock Road, Westbury NY 11590
 ph:516.931.9090 fax:516.931.1254
 info@crystorama.com www.crystorama.com

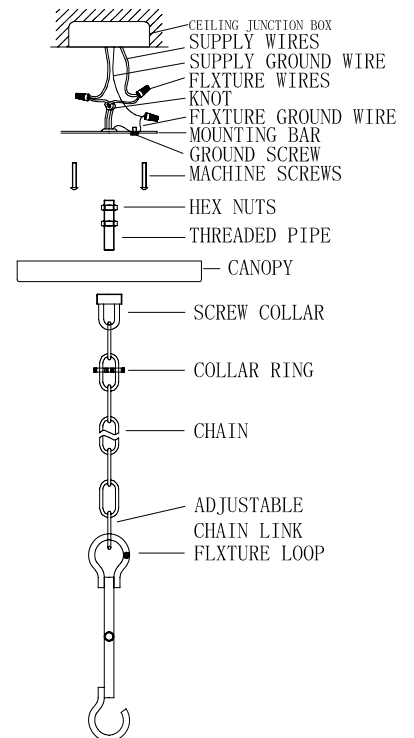
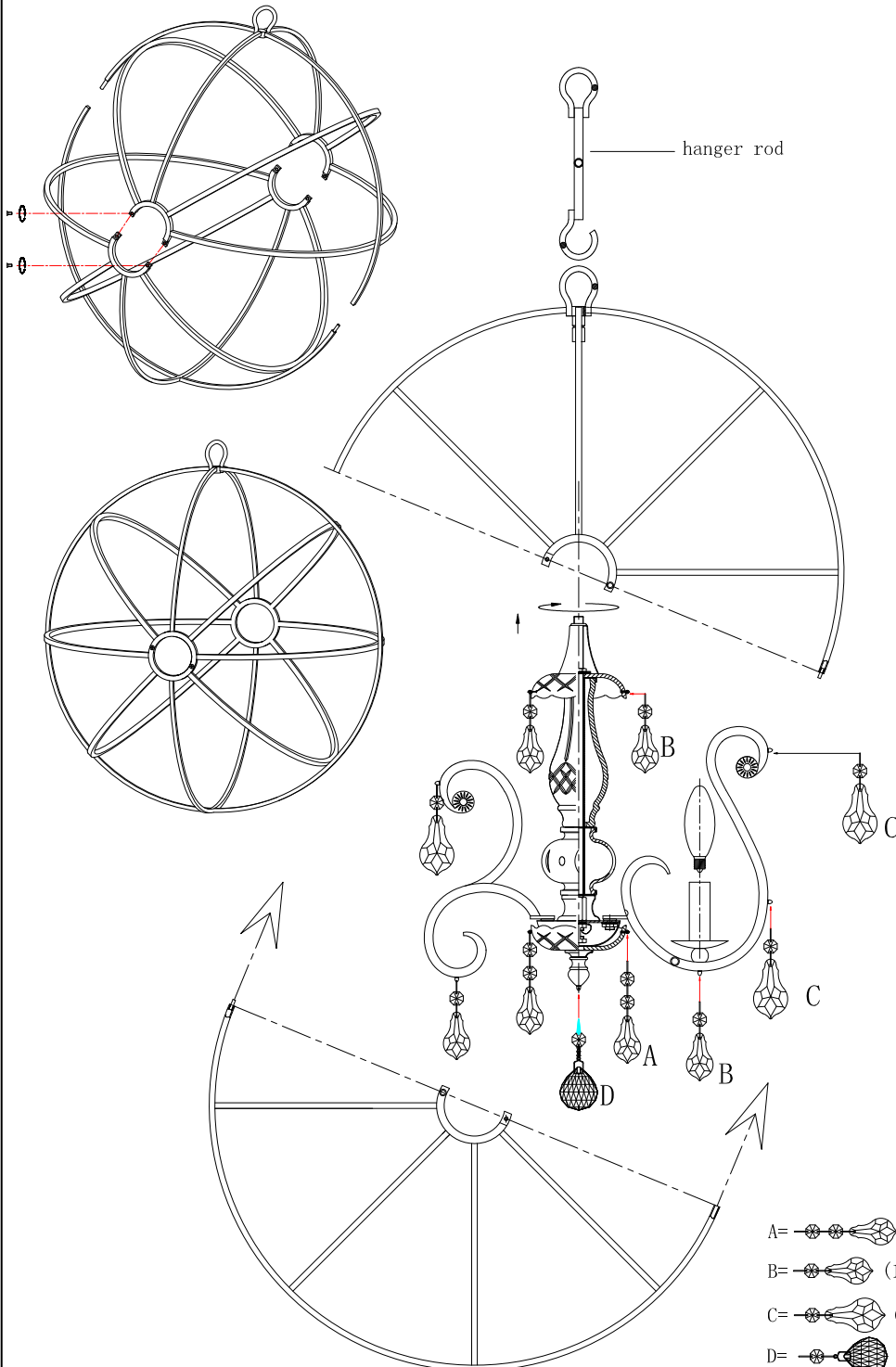
MODEL#:9026-OS-CL-MWP ASSEMBLY AND DRESSING INSTRUCTIONS



All electrical components must be installed by a licensed electrician in accordance with the National Electric Code and the appropriate local electrical codes.



You will need 5 - Cand. Bulb
 40 Watts Recommended
 60Watts Max
 Bulb not included



- A= (1X50mm Pendant+2X14mm Jewels)*4pcs
- B= (1X50mm Pendant+1X14mm Jewels)*14pcs
- C= (1X63mm Pendant+1X14mm Jewels)*15pcs
- D= (1X40mm Ball+1X14mm Jewels)*1pc

2012-07-11