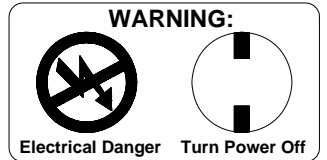


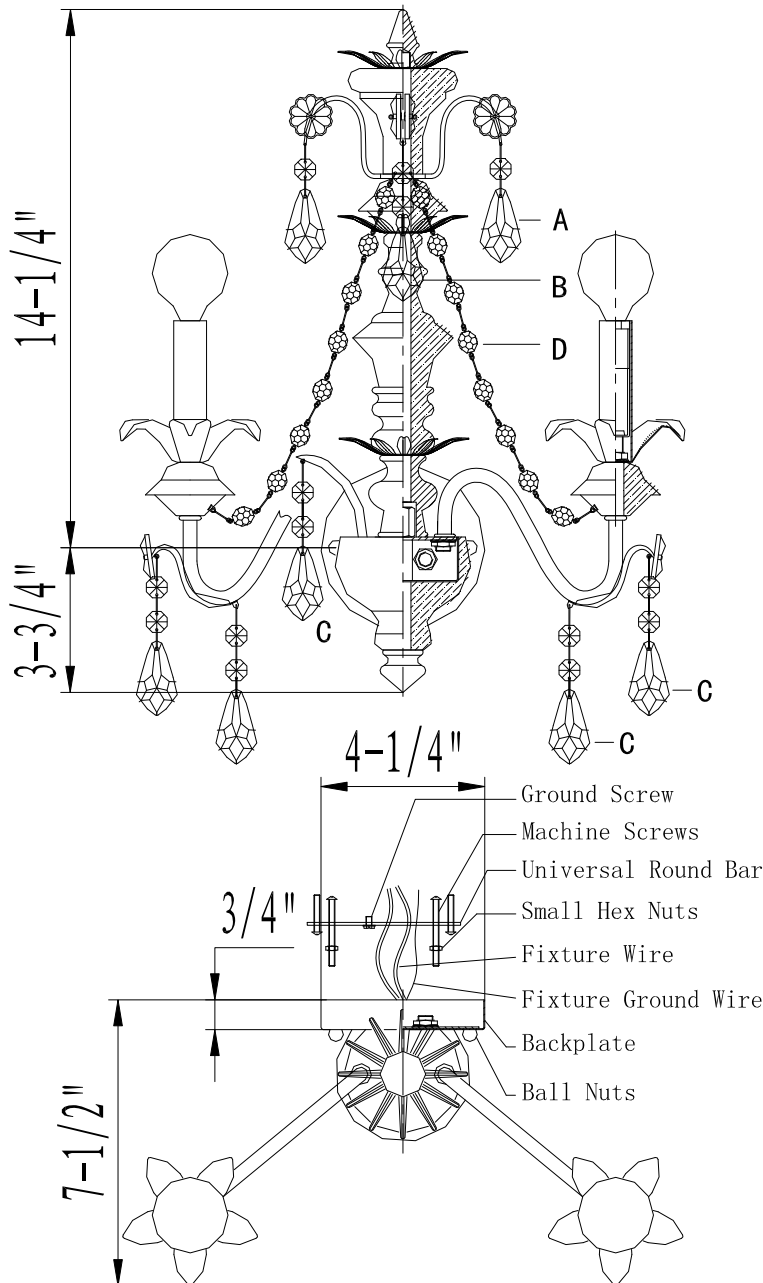
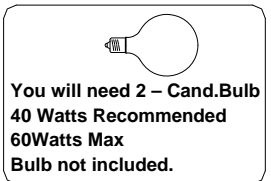
CRYSTORAMA

1958
 95 Cantiague Rock Road, Westbury NY 11590
 ph:516.931.9090 fax:516.931.1254
 info@crystorama.com www.crystorama.com

MODEL#:9252 ASSEMBLY AND DRESSING INSTRUCTIONS



All electrical components must be installed by a licensed electrician in accordance with the National Electric Code and the appropriate local electrical codes.



- A= (1X50mm Crystal+1X14mm Jewels Strand)*2pcs
- B= (1X50mm Crystal+2X14mm Jewels Strand)*1pc
- C= (1X50mm Crystal+2X14mm Jewels Strand)*8pcs
- D= (7X13mm Jewels Strand)*2pcs

2012-08-06