

3" E-Pro LED Recessed Kit



Installation Instructions for EP3 and EP3S Series

WARNING: These products may represent a possible shock or fire hazard if improperly installed or attached in any way. Products should be installed in accordance with these instructions, and with current electrical codes and/or the current National Electric Code (NEC).

WARNING: To avoid electric shock or injury to persons, disconnect power prior to installation.

Caution: Injury to persons and damage to the fixture and/or mounting surface may result if the fixture is not properly installed. To reduce the likelihood of such injury or damage, read and follow all instructions.

Use only a mild soap and water with soft cloth to clean the fixture. Harsh chemicals will damage the finish. Do not wipe the fixture with a rough cloth that may scratch the finish or the lens.

WARNING: Risk of fire or electric shock. Install the LED Swivel Recessed Fixture only with the 3" housing included.

WARNING: Risk of fire or electric shock. The electrical rating of this product is 120V AC. The installer must determine whether power supply is 120V AC before installation. The driver in the housing's junction box must not be removed.

Each 3" E-Pro LED Swivel Recessed Light Kit includes 3-3/8" (86mm) diameter cut-out template; LED light engine (EP3S has swivel feature, EP3 is standard downlight), integrated lens, trim, heat sink, attached torsion clips to hold recessed downlight in place and power lead wire with "A" type connector; insulating foam ring; 3" remodel style housing with power lead wire, power junction box, drywall clips and mating "B" type connector; and these safety/ installation instructions.

INSTALLING RECESSED HOUSING:

To avoid electric shock or injury to persons, disconnect power prior to installation.

1. Determine desired location for light. NOTE: 120V AC supply power is needed in the ceiling plenum at this location.
2. Using the cut-out template, mark the cutting line for installing the remodel housing.
3. Cut this hole from the drywall or surface material using an appropriate saw or cutting tool and remove cut-out material. NOTE: *The size of the cut-out hole is very important! Do not exceed 3-3/8" (86mm) in diameter! Proper installation of housing and light engine depend upon correct sizing of cut-out.*
4. Locate supply power in ceiling plenum. Pull supply wires through cut-out and strip back conductors 3/8". See Figure 1.
5. Push upward on the junction box closure clip to release the junction box cover. See Figure 2.
6. Punch out the knockout that is most suited for the installation. Use UL Listed cable clamp connector (not included) to provide strain relief for supply wires.
7. Route minimum 18AWG solid copper wires through knockout via cable connector. Attach line voltage AC supply wires to driver lead wires inside of junction box: Black to Black, White to White, Green or bare wire to Yellow/Green (Ground). Secure each connection using the quick connectors provided on the driver lead wires. See Figure 3.
8. Replace junction box cover by lining up tabs and pressing firmly until closure clip snaps in place. NOTE: *Be sure that the wires are not pinched or damaged by any part of the junction box or its cover.*

CONTINUED ON REVERSE.

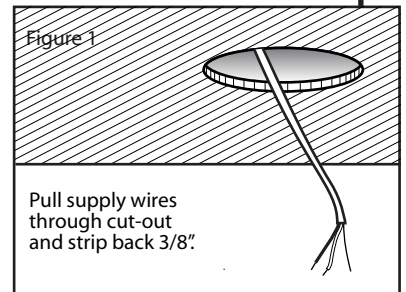


Figure 1
Pull supply wires through cut-out and strip back 3/8".

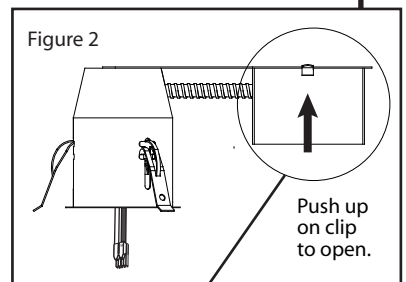


Figure 2
Push up on clip to open.

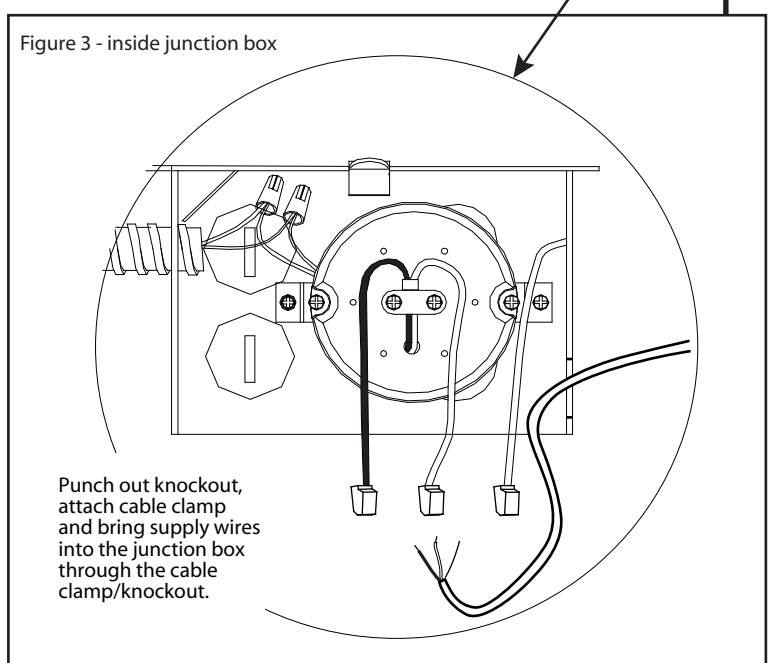


Figure 3 - inside junction box

Punch out knockout, attach cable clamp and bring supply wires into the junction box through the cable clamp/knockout.



3" E-Pro LED Recessed Kit

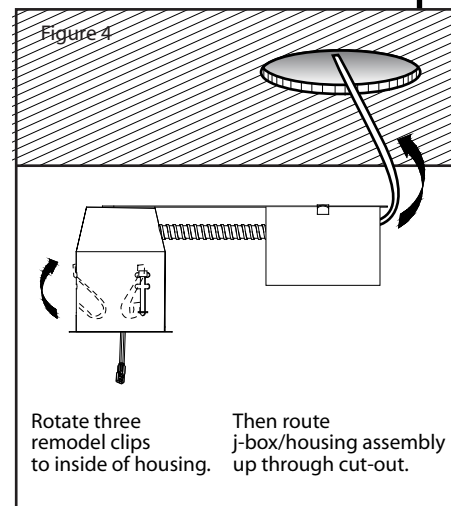
Installation Instructions for EP3 and EP3S Series



WARNING: To avoid electric shock or injury to persons, disconnect power prior to installation. **Caution:** Injury to persons and damage to the fixture and/or mounting surface may result if the fixture is not properly installed. To reduce the likelihood of such injury or damage, read and follow all instructions.

INSTALLING RECESSED HOUSING (continued):

9. Push up on the three black remodel mounting clips, so they rotate to the inside of the recessed housing. See Figure 4.
10. Route junction box/housing assembly up through ceiling cut-out. See Figure 4.
11. Align bottom of housing with ceiling plane. Reaching inside the remodel can, push remodel mounting clips outward so they snap down and secure housing against sheet rock/ceiling material as shown in Figure 6.



INSTALLING TRIM/LIGHT ENGINE:

To avoid electric shock or injury to persons, disconnect power prior to installation.

1. Insert power lead wire's type "A" connector into mating type "B" connector. See Figure 5.
2. To anchor trim/light engine to recessed housing, align torsion clips with the interior wall of the can and push trim/light engine gently to ceiling until seated. See Figure 6.

Additional Safety Measures:

1. To avoid electrical shock, do not turn on fixture with missing or damaged lens.
2. There are no serviceable parts inside LED module.

