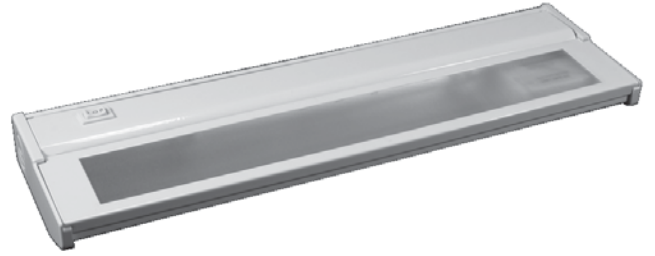


DESCRIPTION

Line voltage Xenon Under Cabinet Lights operate cooler than Halogen and last four times longer. Low pressure 120V Xenon lamps (included) provide up to 8,000 hours of 2800°K dimmable white light with a Color Rendering Index (CRI) of 90. Great for kitchens, offices and medical workstations. Select from three popular finishes: Bronze, Brushed Steel and White.



SPECIFICATIONS

Dimensions:

1-7/16" high by 4-3/4" deep. Available in 8", 16", 24" and 32" lengths.

Construction:

Heavy-gauge, extruded aluminum with plastic end caps and slim, plastic ventilation spacers between fixture housing and mounting surface to minimize heat.

Finishes:

Painted White, Plated Brushed Steel and Plated Bronze.

Reflector:

Full-length aluminum reflector with specular surface maximizes light output.

Lamp:

Dimmable 120V Xenon lamp(s), 20 watts, G8 base. Projected 8,000-hour life. Warm white 2800° K light and CRI of 90.

Lens:

Clear, prismatic, full-length glass lens provides even light distribution. Captive lens cover closure securely holds lens to fixture housing with metal clips at each end. Hinged design allows for easy relamping.

Mounting:

Mount at or near the leading edge of the underside of cabinetry, shelving, or any horizontal surface that is at least 5/8" thick. Optimized for fast, direct wire or portable installation using keyhole mounting slots and male/female moxex connectors.

Safety Ratings:

c/UL/us Listed for indoor applications.

Maximum Run:

Portable units are linkable up to 720 watts using included 24" linking extension cables. See also ELECTRICAL.

ELECTRICAL

Portable:

Use 24" linking extension cable that is included with each portable light fixture ("P" series) to power multiple fixtures from one 120V outlet, up to 720 watts. Two-prong, polarized plug on six-foot power cord snaps into moxex port on back of housing. Removeable slide-on plug allows cord to be cut to desired length, and plug then reattached.

Direct wire:

Hardwire units ("H" series) have 1" knockouts at each end and every 4" along the back of housing, and every 4" along the top at the back edge.

Multiple Fixtures:

A linking extension, 24" in length with moxex connectors at each end, is included with each portable ("P" series) fixture to power multiple fixtures. Snap moxex connector into moxex port at back of fixture to "daisy-chain" system, up to 720 watts.

Hardwire ("H" series) fixtures do not have moxex ports. Note: UL standards only allow *portable* units to be linked together with linking extension cables. UL does NOT permit direct wire/hardwire fixtures to be linked together except by using conduit approved by NEC and local electrical codes.

Switching:

Convenient High/Low/Off rocker switch is standard.

See next page for ordering information



AMERICAN LIGHTING
BRIGHT IDEAS • INNOVATIVE PRODUCTS

T: 800.880.1180

F: 303.695.7633

DATE: _____ TYPE: _____
FIRM NAME: _____
PROJECT: _____

AMERICAN LIGHTING Task5 Fluorescent UCF Series Under Cabinet Light

ORDERING INFORMATION

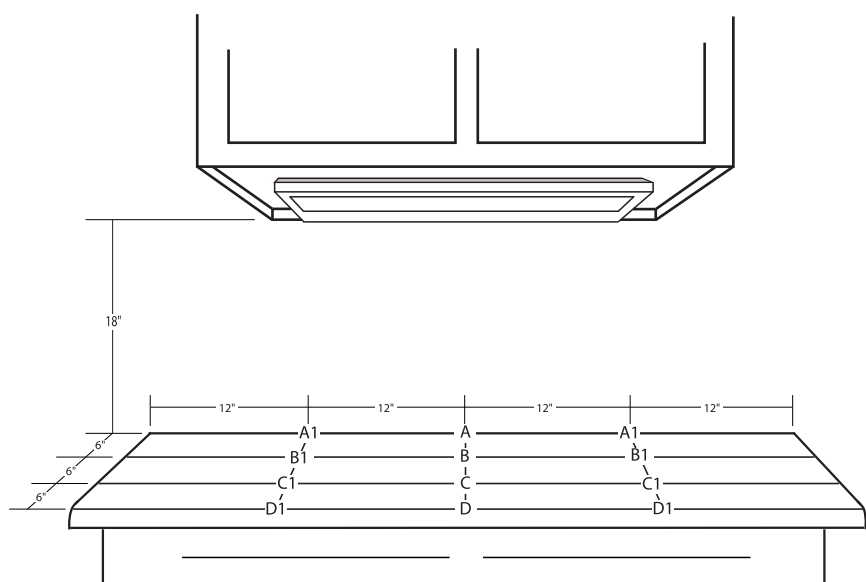
UCF Series	Total Units
12	12 - 12-1/4" with (1) 8 watt lamp
21	21 - 21-1/4" with (1) 13 watt lamp
24	24 - 24-3/8" with (2) 8 watt lamps
33	33 - 33-1/2" with (1) 8 watt and (1) 13 watt lamp
42	42 - 44-1/2" with (2) 13 watt lamps

PHOTOMETRIC DATA

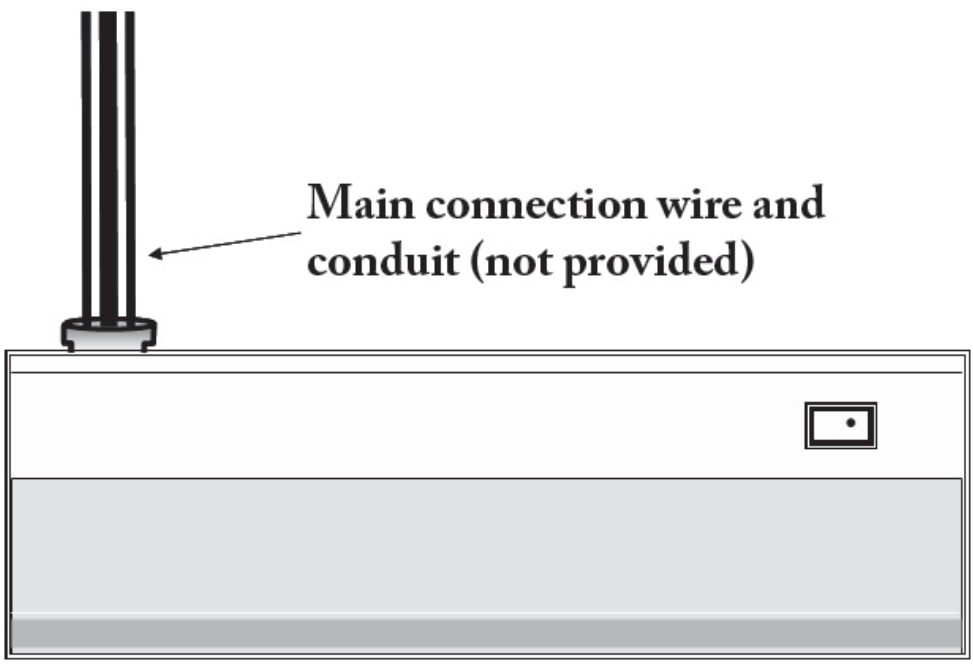
Data shown above, expressed in foot candles, is a result of a single fixture, with the exception of Clear Rope Light. Counter top reflectance 80%. Rear wall reflectance 80%. See diagram for points of measurement.

ACCESSORY INFORMATION

None

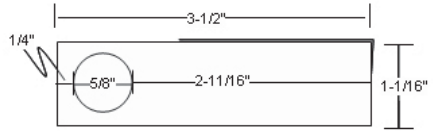
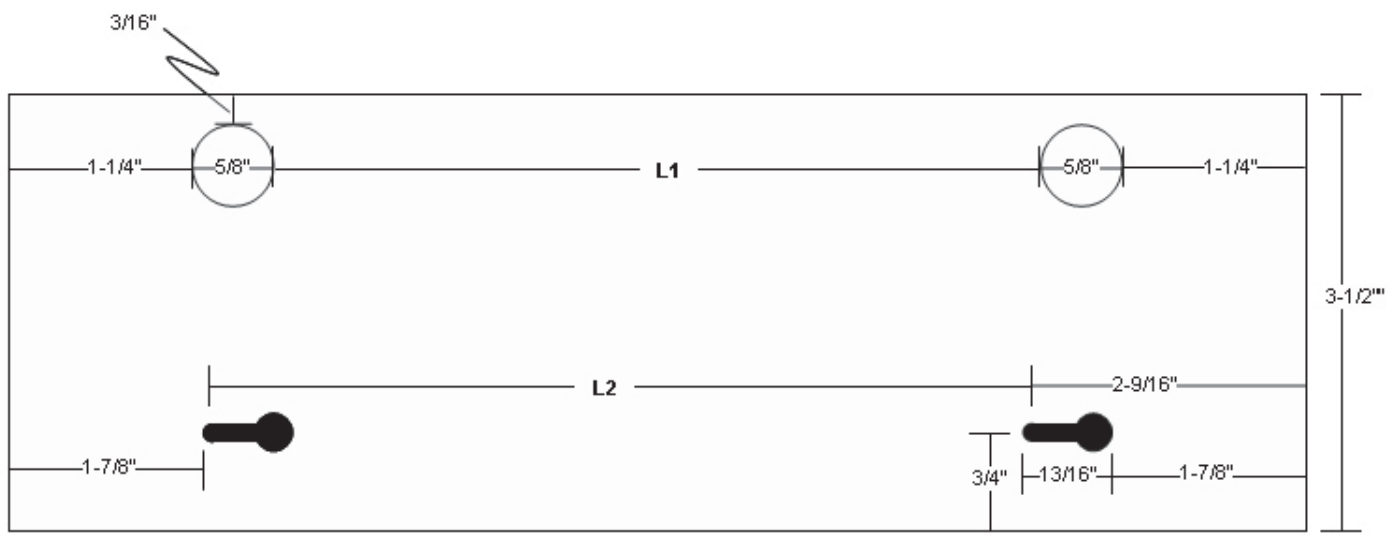
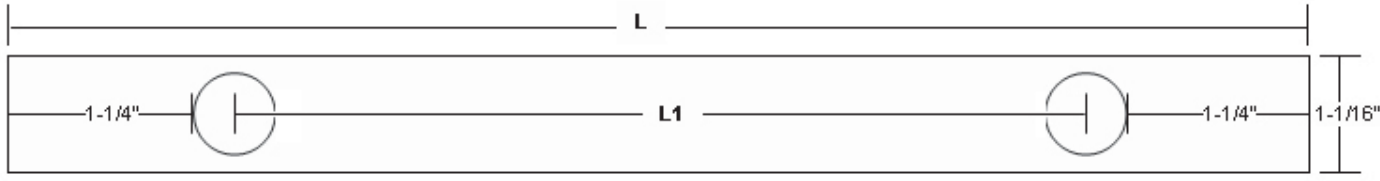
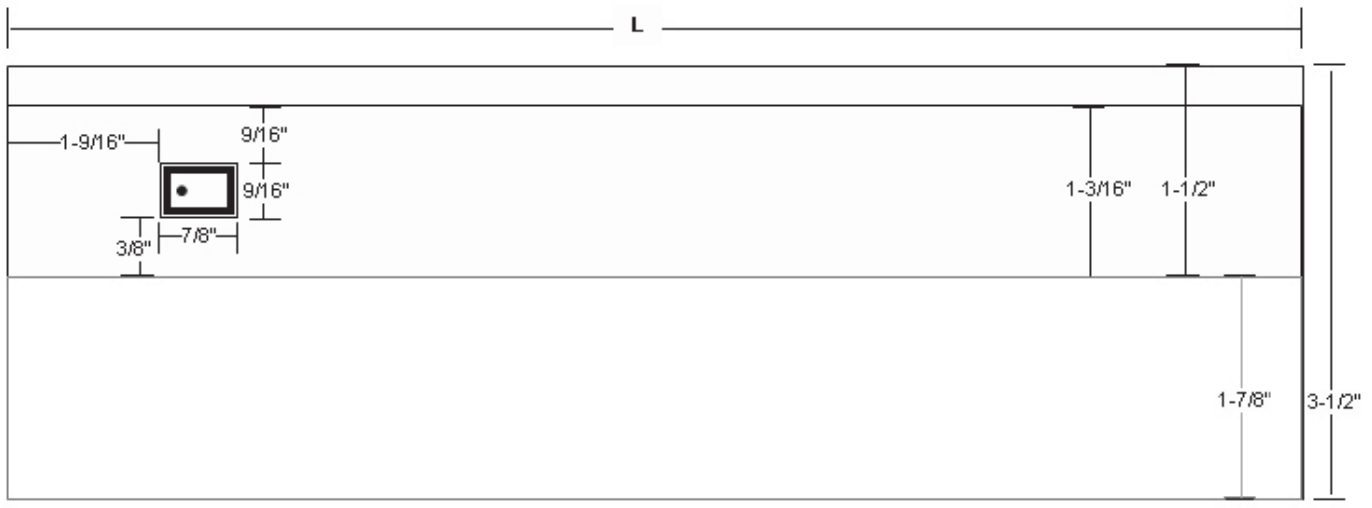


INSTALLATION EXAMPLE



AMERICAN LIGHTING Task5 Fluorescent UCF Series Under Cabinet Light

DIMENSIONAL DATA



PRODUCT	L	L1	L2
UCF-12	12 1/4"	8 1/2"	7 1/2"
UCF-21	21 1/4"	17 1/2"	16 1/2"
UCF-24	24 3/8"	20 1/2"	21 1/2"
UCF-33	33 1/2"	28 1/2"	29 1/2"
UCF-42	42 1/2"	44 1/2"	45 1/2"