



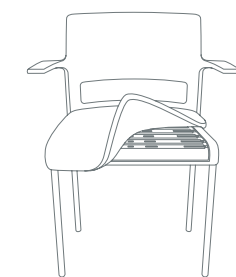
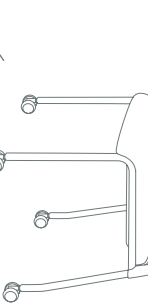


Move™ chair shown in arctic white back with arms, platinum legs, seat Designtex® Pigment Lawn (2711-505)

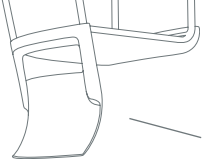
### A kiss on the cheek.

Designed to move, mold and conform to practically everybody's bottom, this light weight stacker can go anywhere and accommodate nearly everyone. Thanks to Live Seat™ technology – a unique system of flexors woven beneath its already comfortable seat cushion – the Move™ chair, quite literally, moves with you.

I like to move it move it.



Peeking at my flexors? So cheeky.

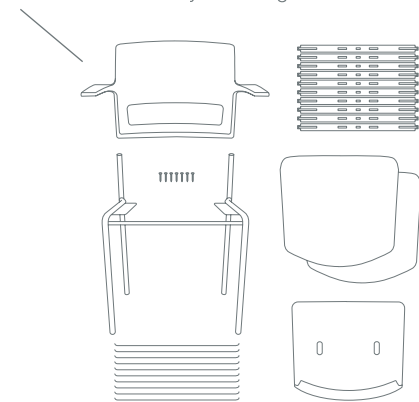


I play especially well with the Leap® and Think® chairs.

### A side chair you actually want by your side.

The Move™ chair shapes and reshapes itself to make sure no matter who sits down, how they sit, or how long they stay, they stay comfortable. Of course, the downside is your guests may never leave.

You'll be able to disassemble me for recycling in about 5 minutes by removing 7 screws.

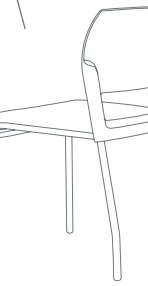


Move™ chair shown in midnight back with arms, platinum legs, seat Designtex® Palette Sky Blue Light (2709-409); shown with Universal Worksurfaces table, Think® work chair and Duo™ Tall Storage



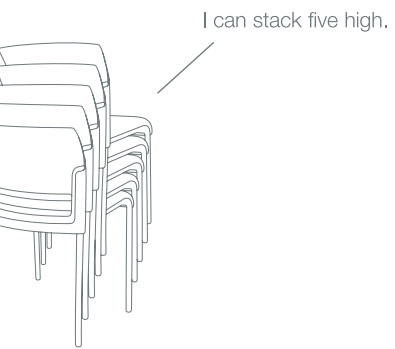
I'm a fun lovin' free wheelin' chair.

I'm tough enough to support 300 lbs.



From now on, only the speaker need be uncomfortable.

Attending a training session shouldn't require training your body to withstand hours of discomfort. Even after an all-day training, an endless meeting or a long lecture, you'll still find yourself surprisingly comfortable.



I can stack five high.

Perfect for café swankiness or cafeteria food fights.

The Move™ chair is stackable, versatile and wonderfully durable. And for the messy eaters of the world, the backrest and arms can be wiped down. The cushions have no stitched seams that can trap spills, and optional leather, vinyl and performance fabrics add to the Move chair's clean and tidy ways.



Wheeeeeeeeeee!

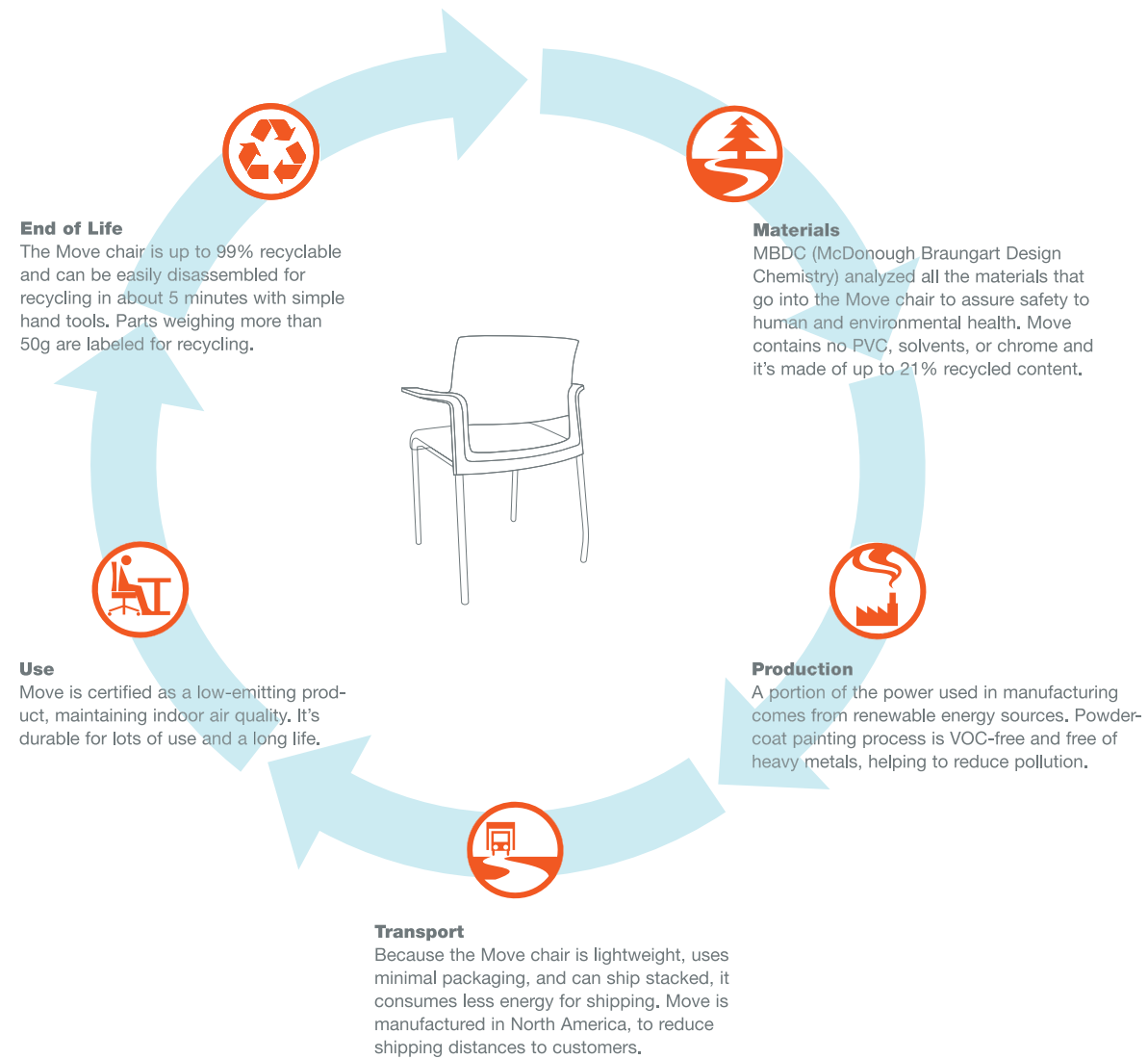


Move™ chair shown in arctic white back, armless, platinum legs, seat Elmo Rustical leather (12001); shown with tables using Universal Worksurfaces tops and Brayton® Enea™ table base

Almost as good when it's in pieces (at least as far as the planet is concerned).

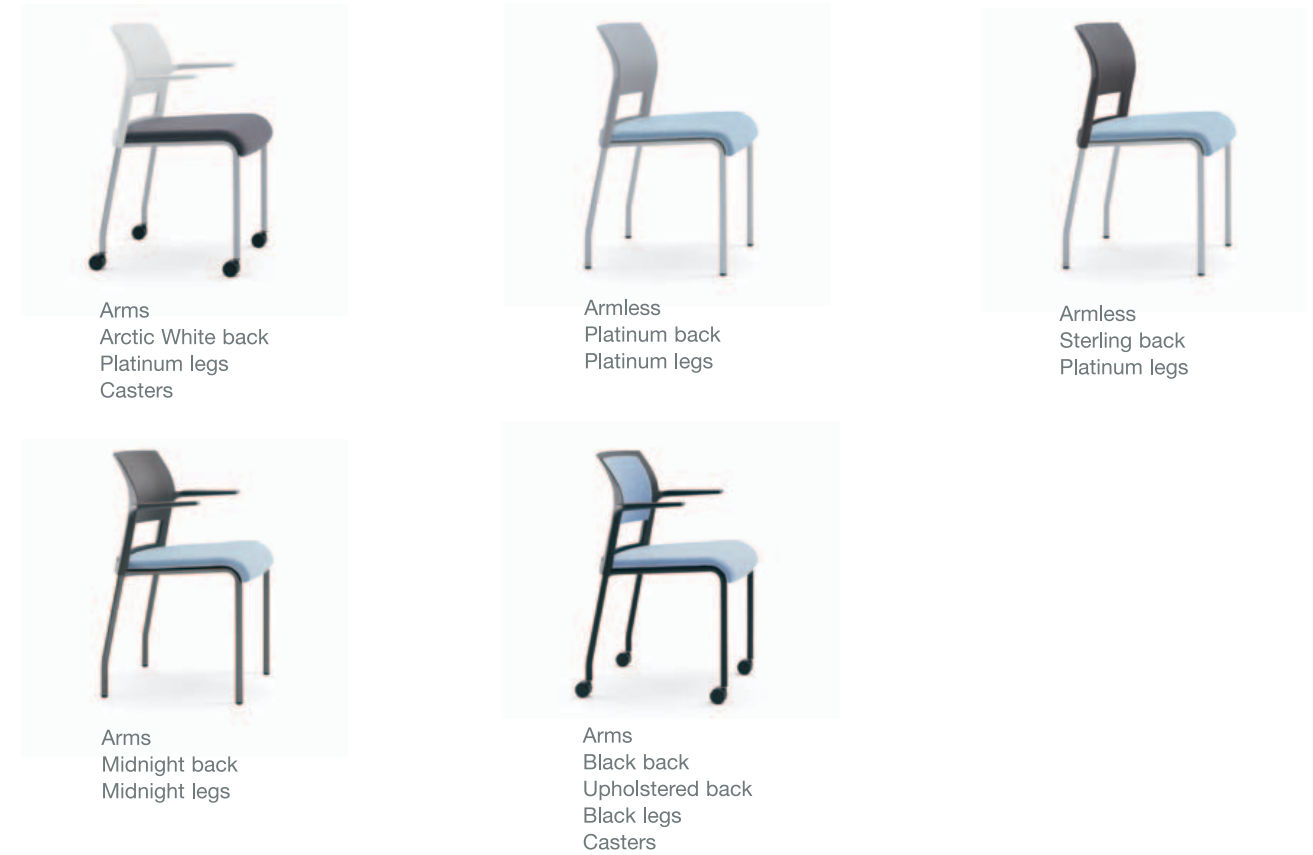
Move™ is designed for the environmentally conscious as well as the comfort conscious. It is pending Gold Cradle to Cradle™ Product Certification from MBDC. Each chair is made from up to 21% recycled materials. Made to disassemble in 5 minutes by removing seven screws. And made to be up to 99% recyclable. So, if you do part ways with your chair, you can take comfort in the fact that 99% of your Move chair can be reused in the manufacture of any number of items.

### Life cycle assessment



Many years from now, when you no longer need your Move chair, the Steelcase Environmental Partnership will help you responsibly take it to the next phase in its lifecycle – be it resale, donation to charity, or recycling.

### Move™ Abbreviated Statement of Line



#### Options

Arms	Non-Upholstered back	White back 6009	Platinum legs 4799	Glides
Armless	Upholstered back	Platinum back 6249	Midnight legs 7239	Casters
		Sterling back 6059	Black legs 0835	
		Midnight back 6259		
		Black back 6205		

#### Dimensions

Overall Depth:	20.25"
Overall Width:	25.75" (with arms) 21" (without arms)
Overall Height:	31.5"
Seat Height:	18.5"

The Move™ chair is backed by the Steelcase Lifetime Warranty and tested to support 300lbs.

#### Global Dealer Network

We speak your language. Over 400 Steelcase dealers in North America, plus more than 500 Steelcase dealers internationally, help you create inspiring workspaces just about anywhere. Whether your project is across town, across the country, or across the ocean, our dealer network will coordinate the logistics so you don't have to. It's local expertise with a global reach.

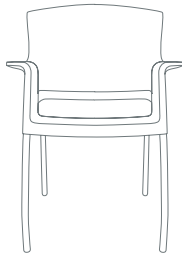
#### Steelcase and Dealer Services

It's more than a product, it's a partnership. Our service offering includes workspace evaluations, space planning, project coordination, installation, maintenance, asset management, and much more. Tailored web-based solutions make it easy to purchase what you need and manage what you have. And financing alternatives provide flexible leasing options.

#### Environmental Commitment

Being an environmentally responsible company starts by asking questions. That's why we carefully analyze all our actions and strive to grow more environmentally effective each day. This means considering the entire life cycle of our products – from raw materials to the day that product is no longer needed. And when that day does come (many years from now) the Steelcase Environmental Partnership program will connect you with resources to donate, refurbish, or recycle your unused Steelcase products.

Alive seating. Because your chair shouldn't just sit there.



Call 800.333.9939 or  
visit [steelcase.com](http://steelcase.com)

**Steelcase**<sup>®</sup>

Do what you do better.<sup>™</sup>

Item #: 06-0001424 9/06 ©2006 Steelcase Inc. All rights reserved. All specifications subject to change without notice. Printed in U.S.A. ♻️ This brochure was printed on chlorine-free 100% post-consumer recycled paper made with windpower. Trademarks used herein are the property of Steelcase Development Corporation or of their respective owners.