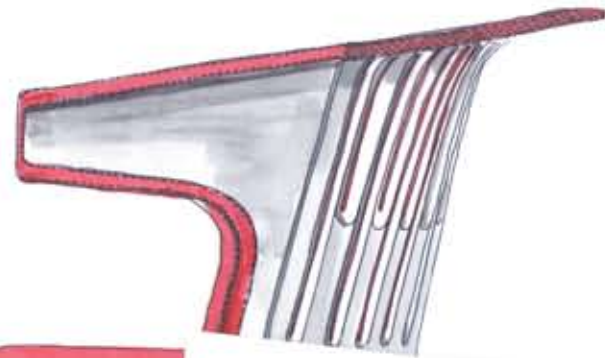


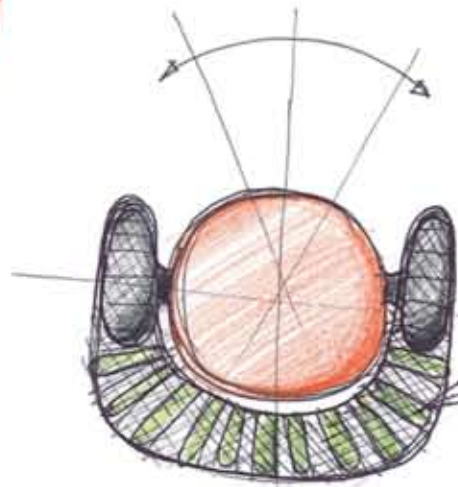
i2i collaborative seating



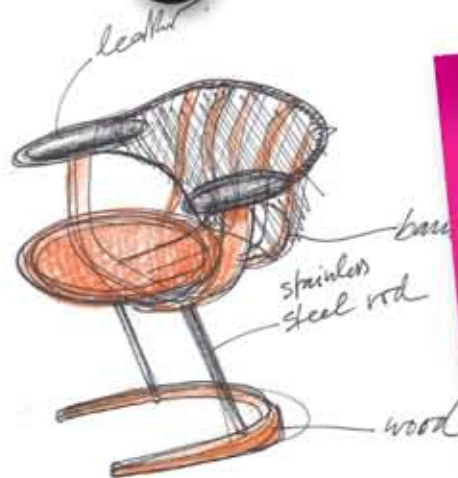
Steelcase



rotating seat



*backrest is flexible
adapts like a collar
to move*



Work. Don't wait.

Sometimes, you don't need a conference room to collaborate. You may only need a few chairs in which you and a small team can connect. And those big, stuffy lounge chairs don't cut it (unless you're looking for a place to nap). You need a chair designed for working, not waiting. You need a chair you can move, shift, and breathe in. A chair that lets you orient yourself to your fellow collaborators without taking away your focus or sacrificing your comfort.

Introducing i2i™, part of our new category of collaborative seating. The i2i chair was designed specifically to foster collaboration and was based on three observations that generated our key insights:

1. Chairs should promote movement and be comfortable for long periods of time.
2. Adjustments should be automatic and intuitive.
3. Chairs should support multiple postures.

3 Key observations

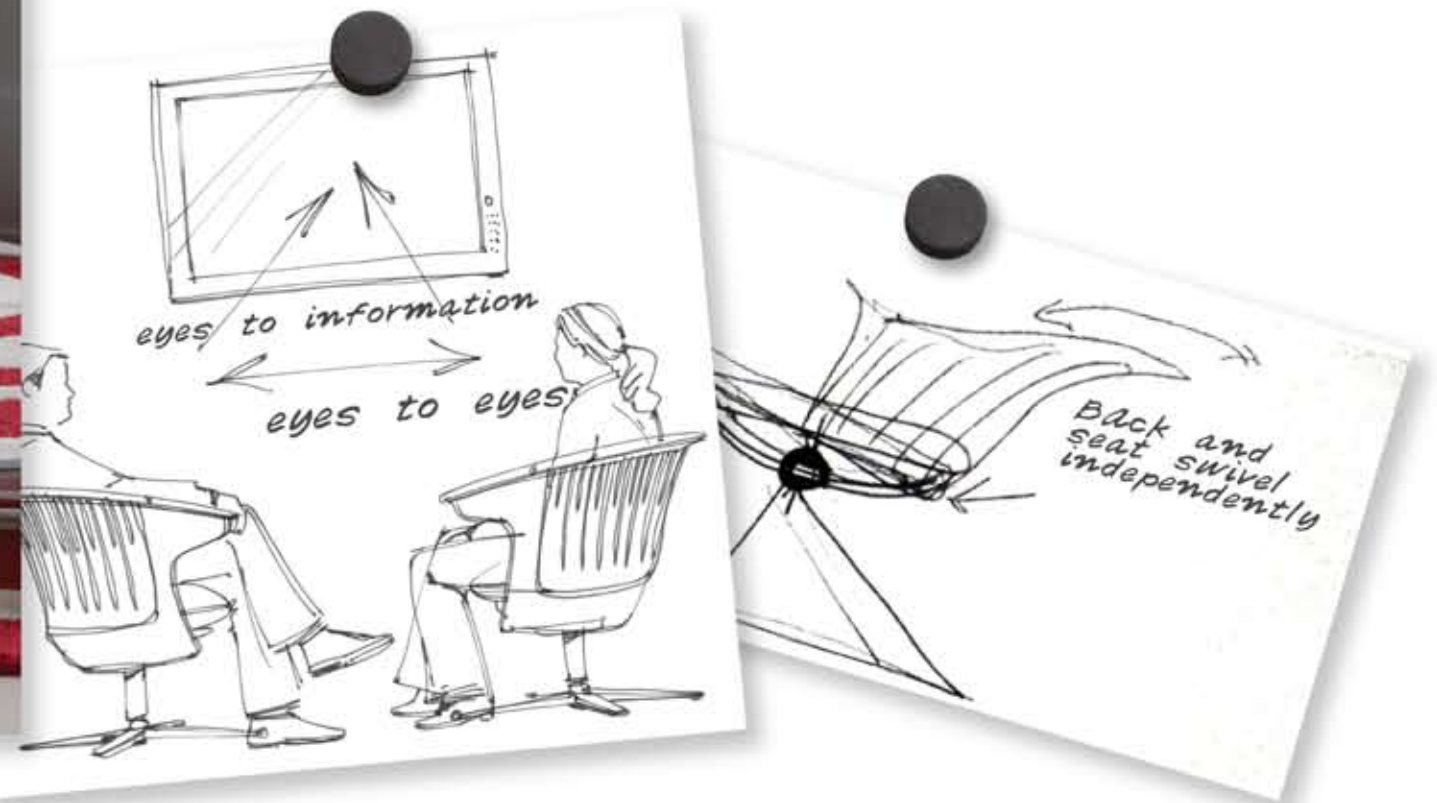
1. Collaboration takes time.
2. People don't adjust their chairs while collaborating.
3. People change postures when collaborating.



Keep up your posturing.

Imagine yourself in a meeting. You have a lot to take in: people to your left and right, people straight ahead, and often a screen or laptop as a centerpiece. And don't forget to say something intellectual. You want (and need) to be able to move freely to fight fatigue and actively engage with others. But how do you maintain focus and orientation without losing comfort?

The i2i chair's **dual swivel mechanism** keeps you focused where you need to be: keeping **eyes to eyes** and **eyes to information**. The back and seat swivel independently, allowing you to change your posture without changing your orientation... and vice versa.





An intuitive seating arrangement.

Your body requires you to move and shift, and when you do, i2i accommodates. Tilt back, forward, left, or right. Slant your body in any direction. Slouch if your mother isn't looking.

Every time you move, the **flexing back** gives you the proper support for whatever position you put yourself in for as long as you need it. And with **no adjustments**, i2i keeps you comfortable without forcing you to fiddle with levers. One less thing you need to think about.



Statement of Line



Chair: With roller base



Chair: With tablet arm and glide base



Collaborative Lounge Table

Upholstery options



Standard upholstery
Back: 3D Knit
Seat: Cogent™: Connect

Frame finishes



Near Black 6295



Platinum 6249



Steelcase aspires to help people love how they work, by helping them create high performance workplaces. We study how work gets done and how great spaces can help. Those insights are embedded into every product and service we offer. Our furniture, interior architecture and technology solutions help organizations build their business, reflect their brand and support their culture. Our job is to make your job easier. Our passion is helping you Love How You Work®.

Global Dealer Network

We speak your language. Over 400 Steelcase dealers in North America, plus more than 500 Steelcase dealers internationally, help you create inspiring workspaces just about anywhere. Whether your project is across town, across the country, or across the ocean, our dealer network will coordinate the logistics so you don't have to. It's local expertise with a global reach.

Steelcase and Dealer Services

It's more than a product, it's a partnership. Our service offering includes workspace evaluations, space planning, project coordination, installation, maintenance, asset management, and much more. Tailored web-based solutions make it easy to purchase what you need and manage what you have. And financing alternatives provide flexible leasing options.

Cogent: Connect Color options

Color swatches shown may vary from actual colors. Please use actual surface material samples when specifying colors.



Coconut 5S15



Turmeric 5S16



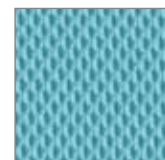
Tangerine 5S17



Scarlet 5S18



Concord 5S19



Maya Blue 5020



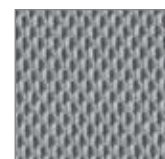
Blue Jay 5S21



Basil 5S22



Wasabi 5S23



Nickel 5S24



Graphite 5S25



Licorice 5026

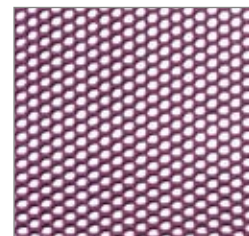


Malt 5S27



Root Beer 5S28

3D Knit



Dimensions:

Seat Depth	17.5"
Seat Width	19"
Seat Height from Floor	17.5"
Back Height from Seat	17.25"
Width between Arms	23"

The i2i chair was designed by the Steelcase Design Studio in collaboration with Thomas Overthun of IDEO.

Color match available for all Cogent: Connect color options



The i2i chair has **Indoor Advantage certification** from Scientific Certification Systems as being a low emitting product. **Cradle to Cradle™ Certification** requirements are in process.

When your i2i chair is no longer useful to you, the **Steelcase Environmental Partnership** program will help you responsibly take it to the next phase in its Life Cycle—be it resale, refurbishing, charitable donation or recycling.

Visit steelcase.com for complete information regarding recyclable content and Life Cycle Assessment.

Love how you work.®

Steelcase®

Call 800.333.9939 or visit steelcase.com

Item #: 09-0000151 1/09 ©2009 Steelcase Inc. All rights reserved. All specifications subject to change without notice. With i2i's ability to offer eye to eye connections, we find it's the perfect chair for staring contests.