



Light Duty Commercial Electric Water Heaters

Point-of-Use, Tall & Short models – 6 to 120 Gallons

Available in point-of-use, tall and short models, Lochinvar's commercial electric water heaters offer a wide range of capacities and a choice of voltages. This flexibility—combined with their Energy Saver design and durable construction—makes them ideal for many low-draw commercial and industrial applications.

Standard Features

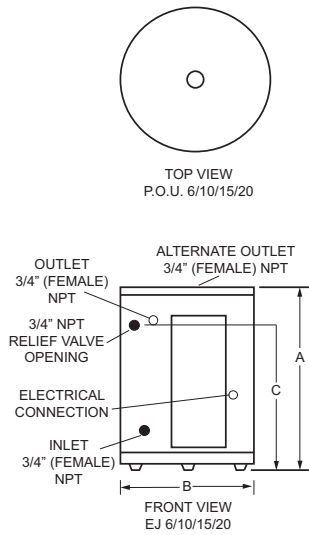
- **Non-Simultaneous or Simultaneous Wiring** - Wired for non-simultaneous operation standard. Field adjustable to simultaneous operation.
- **Glass-Lined Steel Tank** - The durable glass lining is fused to the tank at 1600°F to assure lasting protection against rust and corrosion while providing clean, clear hot water. 300 psi test pressure provides 150 psi working pressure.
- **Non-CFC Foam Insulation** - Superior material formulation provides uniform tank coverage with a thick blanket of insulating foam. This non-CFC polyurethane closed cell foam minimizes standby losses and maximizes heat retention.
- **Adjustable Thermostats** - This accurate control provides an easy way to reset water temperature for best economy.
- **Automatic Overheat Protection** - Provides automatic overheat safety control with manual reset high limit feature.
- **Tank Saver Anode** - A large diameter, high capacity anode inhibits corrosion of the tank interior for long, trouble-free service.
- **Single or Three Phase Wiring** - Wired for 3-phase operation standard. Field adjustable to 1-phase.
- **ASME Temperature & Pressure Relief Valve** - Factory installed.
- **3- Year Limited Tank Warranty, 1-Year Limited Parts Warranty** – See warranty for details.



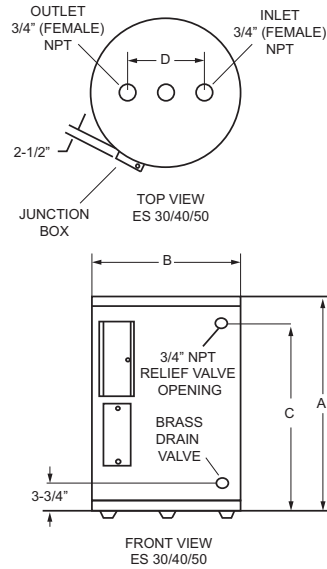
Meets ASHRAE Energy Efficiency Standards

Dimensions & Specifications

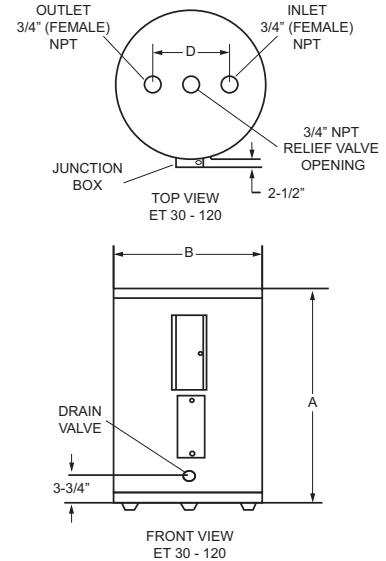
Point-of-Use models



Short models



Tall models



Light Duty Commercial Models

Model	Gallon Number	Capacity	A	B	C	D	Shipping Weight
Point-of-Use Models							
EJA006FS	6	15-1/2"	14-1/4"	11"	-	-	35
EJA010FS	10	18-1/4"	18"	12-1/2"	-	-	54
EJA015FS	15	26"	18"	20-1/2"	-	-	58
EJA020FS	20	22-1/4"	21-3/4"	15-1/2"	-	-	73
Short Models							
ESX030KD	30	31"	21-3/4"	24-1/4"	8"	8"	100
ESX040KD	40	32-1/4"	24"	25-1/2"	8"	8"	125
ESX050KD	50	32-1/4"	26-1/2"	25-1/4"	8"	8"	166
Tall Models							
ETX030KD	30	34-1/2"	20-1/2"	-	8"	8"	98
ETX040KD	40	45-1/4"	20-1/2"	-	8"	8"	113
ETX050KD	50	55"	20-1/2"	-	8"	8"	131
ETX065KD	66	60-3/4"	21-3/4"	-	8"	8"	176
ETX080KD	80	59-1/2"	24"	-	8"	8"	211
ETX120KD	119	62-1/2"	29-1/2"	-	8"	8"	326

Notes: Water connections 3/4" NPT on all models.

Amperage Recovery Table

Element	Wattage	Recovery Rate (GPH @ °F Rise)				
		40°F	60°F	80°F	100°F	120°F
C	1500	16	10	8	6	5
E	2000	21	14	10	8	7
F	2500	26	17	13	10	9
G	3000	31	21	16	12	10
H	3500	36	24	18	14	12
J	4000	41	28	21	17	14
K	4500	47	31	23	19	16
M	5000	52	34	26	21	17
N	5500	57	38	28	23	19
P	6000	62	41	31	25	21
Simultaneous	7000	72	48	36	29	24
Simultaneous	8000	83	55	41	33	28
Simultaneous	9000	93	62	47	37	31
Simultaneous	10000	103	69	52	41	34
Simultaneous	11000	114	76	57	45	38
Simultaneous	12000	124	83	62	50	41

Voltage Schedule

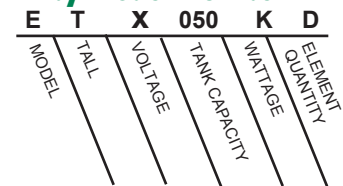
	120V	208V	240V	277V	480V
A 240V / 1 PH	Yes	Yes	Yes	Yes	---
J 208V / 1 PH	Yes	Yes	Yes	Yes	---
T 208V / 1 or 3 PH	Yes	Yes	Yes	Yes	Yes
P 240V / 1 or 3 PH	---	Yes	Yes	---	---
W 277V / 1 PH	---	Yes	Yes	Yes	Yes
V 480V / 1 PH	---	Yes	Yes	Yes	Yes
X 480V / 1 or 3 PH	---	Yes*	Yes*	---	Yes*
	---	---	Yes*	---	---
	---	Yes†	Yes‡	Yes	Yes

P.O.U. models available in single phase only.
6 gallon P.O.U. not available above 2500 watts or in 480 V.
* 5000 & 5500 watts are not available for P.O.U. models.
† Non-simultaneous circuit only.
‡ Short & Tall models are factory wired for three phase service and are field converted to single phase.

Wattage Limits w/ Simultaneous Operation

208V	- 10,000W (5,000W/5,000W)
240V	- 11,000W (5,500W/5,500W)
277V	- 12,000W (6,000W/6,000W)
480V	- 12,000W (6,000W/6,000W)

For Ease in Ordering by Model Number



This is a Tall Commercial Electric 480 volt model with a tank capacity of 50 gallons. The upper and lower elements are 4500 watts.



Lochinvar
High Efficiency Water Heaters, Boilers and Pool Heaters



Lochinvar, LLC • 300 Maddox Simpson Pkwy • Lebanon, TN 37090 • 615-889-8900 / Fax: 615-547-1000

www.Lochinvar.com