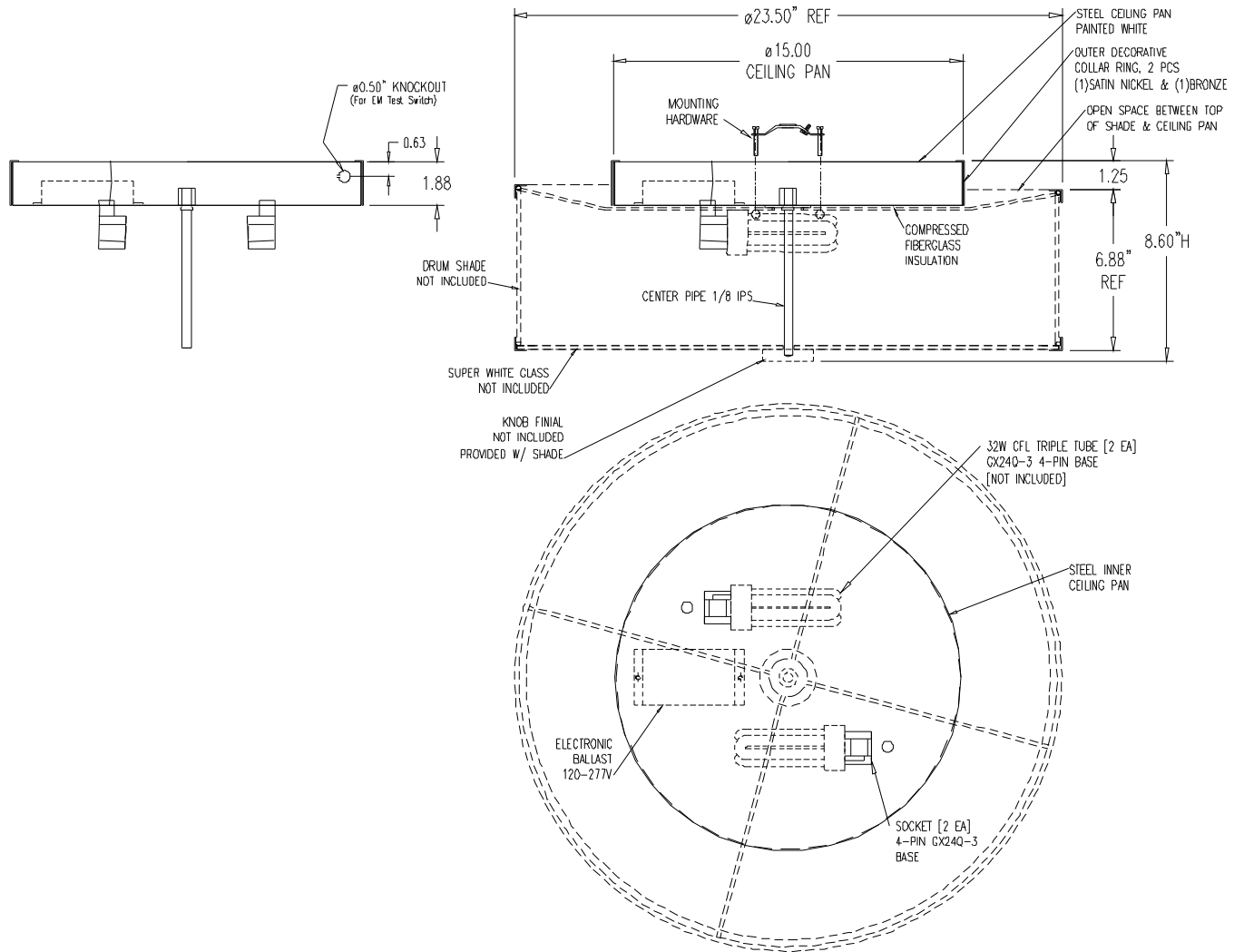


## CFL CEILING PAN



**CONSTRUCTION:** Steel Pan

**ELECTRICAL:** Electronic 120/ 277V ballast standard. Accepts 2 x26, 32 or 42W Triple Tube CFL lamps  
UL Approved for damp location use

**FINISHES:** Pan ships with both satin nickel and bronze collars. Select collar that coordinates with selected shade

**MOUNTING:** Mounts to octagon junction box or 4x4 junction box with round plaster adapter

**OPTIONS:** Dimming and emergency battery available, consult factory. Compatible with shades 1140/ 1141/1142. Specify shade separately