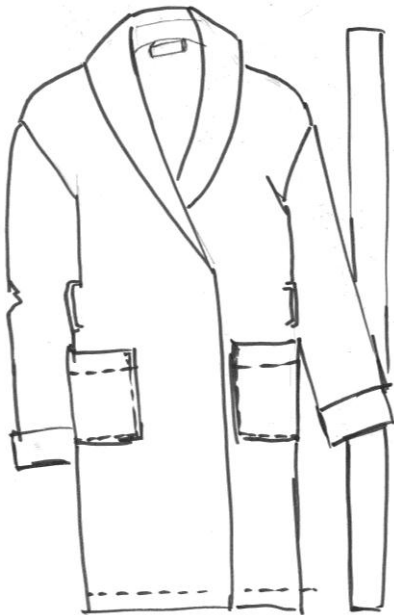


Robe Specifications	S/M	L/XL
Body Length from HP FT Seam	42	43 1/2
1/2 Chest - 1" Below A.H @ FRT	21	22 1/2
1/2 Sweep	21	22 1/2
Sleeve Length to the joined seam to cuff	22	22 1/2
Arm Hole(Curve)	20	21
1/2 Sleeve Opening(Cuff)	6	6
1/2 Bicep - 1" below AH	9 3/4	9 3/4
BK Neck Width	7	7
BK Neck Drop from HP Seam	1	1
Pocket Width	6	6
Pocket Height	7	7
Pocket Fold Back Stitch	1 1/4	1 1/4
Shoulder Width	21	22
Sleeve Cuff Hight	2 1/2	2 1/2
Collar Height @ CB	6	6
Tie Loop Finish Measurement	3	3
Tie Loop space	2 apart	2 apart
Tie loop placement from AH	7	7



Self Loop 3/16" x 2 1/4"

Place each side 1 3/4" apart

Tie—1 3/4" and 68"

Fold Back Sleeve