

# Permaspray

The Vinyl Flooring Adhesive Spray  
Installation Guide

# Comparison to Trowel Adhesives

Benefit	Perma Spray	Conventional Trowel Adhesives
Easy to use – spray standing up		
Fast application time – spray on, wait until dry, apply flooring, then use a roller or walk down the ENTIRE surface – it's ready to use!		
No offensive odors – environmentally friendly		
Allows immediate foot traffic		
Allows immediate trade traffic		
Heat weld in 2 hours		
Wax/Finish floor immediately		
No trowel marks		
No epoxies needed		

# Benefits of Permaspray

- One adhesive can be used for:
  - Luxury vinyl planks and tiles
- For use over: concrete, wood, metal or well-adhered existing VCT
- Cuts installation time by 75% compared to trowel adhesives
- No need to be on hands and knees to apply adhesive. Adhesive is sprayed on while standing
- Once the floor is rolled or the entire surface is walked down, it can immediately be used

# Installation Guide

1

## CONDITION MATERIALS



Do not use under 68°F or over 85°F. Store away from extreme heat / cold. Ensure all flooring materials have been properly acclimated according to manufacturer's instructions.

Do not use under 68°F or over 85°F. Store away from extreme heat / cold. Ensure all flooring materials have been properly acclimated according to manufacturer's instructions.

2

## SURFACE PREPARATION



Surfaces must be dry and free of dust / debris. Damp mop if needed. Wipe hand across surface. If dust transfers, clean floor again.

Surfaces must be dry and free of dust / debris. Damp mop if needed. Wipe hand across surface. If dust transfers, clean floor again.

3

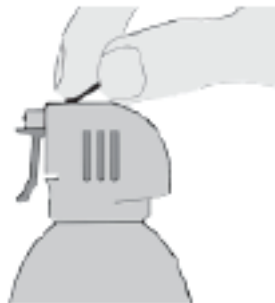
## SHAKE CAN WELL

Shake can well before use.

Remove blue safety tab.

Shake can well before use.

Remove blue safety tab.



4

## PROTECT FROM OVERSPRAY

Protect from overspray with spray shield, drop cloths, paper or masking. Clean overspray with damp cloth while adhesive is still wet.

Protect from overspray with spray shield, drop cloths, paper or masking. Clean overspray with damp cloth while adhesive is still wet.



# Installation Guide

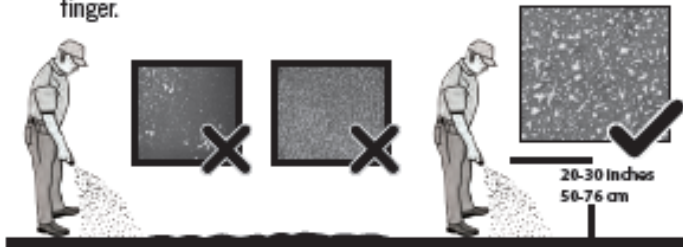
## 5 SPRAYING ADHESIVE / ADHESIVE DRY TIME

Standing up, hold can slightly away from the body. Aim at floor and press the trigger with your finger.

Standing up, hold can slightly away from the body. Aim at floor and press the trigger with your finger.

Adhesive should spray in a wide mist towards the floor. Spray pattern should be even on the floor.

Adhesive should spray in a wide mist towards the floor. Spray pattern should be even on the floor.



Allow adhesive to dry until there is no transfer to your fingers when lightly touched. (Usually 10-20 minutes)

High humidity / low temperature will increase adhesive drying time.

Allow adhesive to dry until there is no transfer to your fingers when lightly touched. (Usually 10-20 minutes)

High humidity / low temperature will increase adhesive drying time.



## 6 ADHESIVE WORKING TIME



0:00 - 3:00

Adhesive working time is three hours after spraying. Do not allow the adhesive on the floor to be contaminated with dirt / debris before laying floor.

Adhesive working time is three hours after spraying. Do not allow the adhesive on the floor to be contaminated with dirt / debris before laying floor.

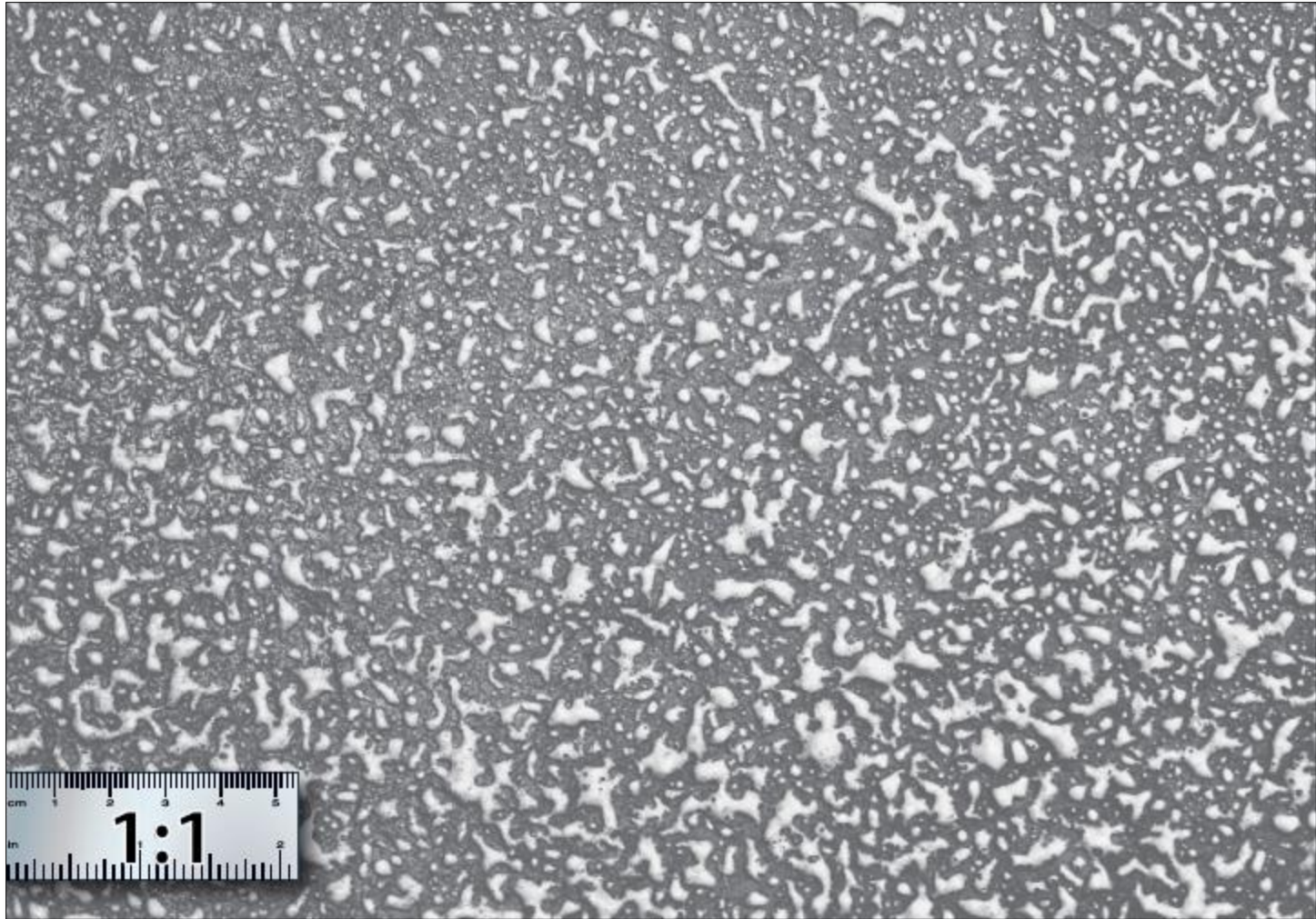
## 7 INSTALL / FINISH FLOORING

Install flooring per the manufacturer's instructions. Walk over / roll floor within 1 hr. of installation. Floor will then be ready for all traffic.

Install flooring per the manufacturer's instructions. Walk over / roll floor within 1 hr. of installation. Floor will then be ready for all traffic.



# For Reference: Desired Spray Pattern



# Frequently Asked Questions

**Normally I pick up dirt and dust in my trowel. Won't cleaning the floor thoroughly take more time than my existing adhesive currently does?**

- Permaspray recommends the use of a damp mop as your final floor preparation to address this issue. Its true, you will spend a little more time doing floor preparation for some floor materials, especially for VCT- but you save a lot of time and energy by spraying your adhesive as opposed to toweling it. In fact, our customers have told us that they have noticed up to a 50% productivity savings when using Permaspray.
- Even if you spend an extra few minutes on floor preparation, it is worth it when the overall job is finished 50% faster.

**I've seen spray adhesives before. They are high pressure with a strong solvent odor (which are not usually accepted on a work site). These high-pressure spray systems are difficult to avoid over spray onto unwanted surfaces and are messy to clean up. What is different about Permaspray?**

- Permaspray adhesives are LOW in pressure and HIGH in solids. This means that the adhesive falls immediately to the ground without atomizing and becoming airborne. You can control the width of the spray by holding the can closer or farther from floor.
- Adhesives DO NOT contain ANY solvents or emit any solvent-based odors. Our adhesives are water based and are NON FLAMMABLE. The adhesive formula contains ZERO VOC's (Volatile Organic Compounds). Permaspray sets a new benchmark in health and safety for installers in the floor adhesive industry. We also offer new flexibility in applying adhesives in sensitive occupied space areas such as schools, nursing homes and hospitals without affecting installers, students, staff or patients.
- Because of our water based formula, our adhesives are easy to clean up. A cloth dampened with water can remove any overspray while the adhesive is still wet. Plus, installers are not covered in messy adhesive at the end of the day.

# Frequently Asked Questions (cont'd)

## **Is Permaspray a pressure sensitive adhesive?**

- Yes and No. Permaspray has some characteristics that act like a pressure sensitive adhesive and others that do not.
- For example, Permaspray is similar in its ability to have a long open time before the adhesive dries out and is unusable.
- However, Permaspray is unlike pressure sensitive adhesives in that after 24-48 hours, the adhesive's chemistry physically cross-links to itself, providing stronger cohesion. This gives you immediate usability of the flooring. Its releasability is dependant on the flexibility of the flooring. With flexible flooring products you can easily remove them with out damage to the subfloor or flooring.

## **When I use the spray adhesive I notice the initial peel strength isn't that strong, as I can easily pull my vinyl planks off the floor. Why is this?**

- Once the floor covering is placed, installer can reposition flooring easily to correct any misalignments as needed before pressure is applied to floor. When pressure is applied to the floor, bonding strength is achieved allowing immediate use of the floor. After 24 hours the peel strength is fully achieved.

## **Do I spray both the substrate and floor covering like I would do with a contact spray?**

- No. You only apply adhesive to the substrate.

## **What do I do with the empty Aerosol Cans?**

- Permaspray is packaged in a 100% recyclable aluminum can and box, as they contain no flammable or toxic materials.



# Tips and Tricks

- If sub floor has uneven joints, you may want to lightly sand the joints down to create a level sub floor
- Repairing damaged flooring is simple and easy
  - Remove damaged flooring
  - Scrape away old adhesive with razor knife
  - Spray floor or back of tile
  - Allow to dry
  - Then re-install
- Can be used to reinforce peel and stick flooring adhesives