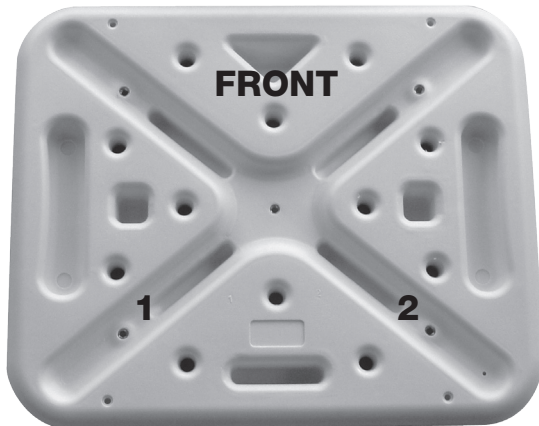


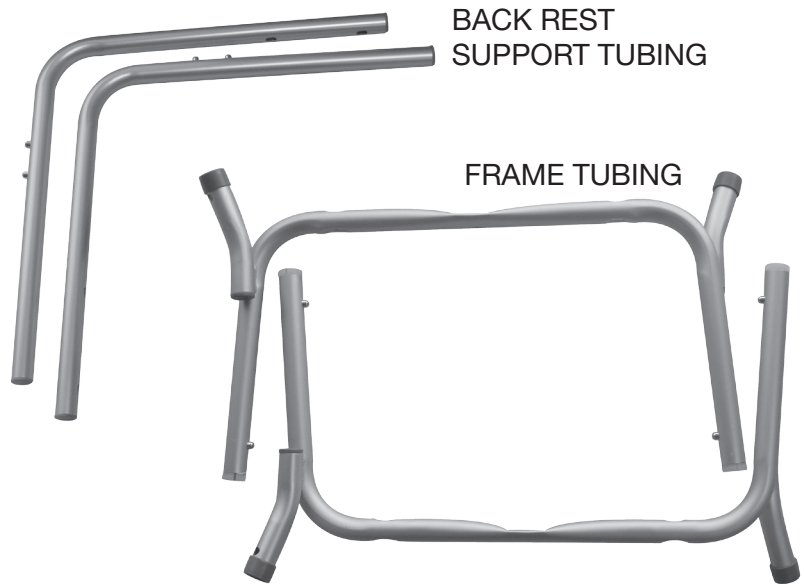


B3011 Shower Bench with Back & Padded Removable Arms

SEAT



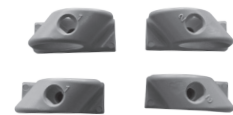
BACK REST



BACK REST
SUPPORT TUBING

FRAME TUBING

ARM REST (2 EA.)



GUIDES FOR BACKREST
SUPPORT TUBING (4 EA.)



ADJUSTABLE LEGS (4 EA.)

M6 ROUND HEAD
SCREW & CURVED
WASHER (5 EA.)



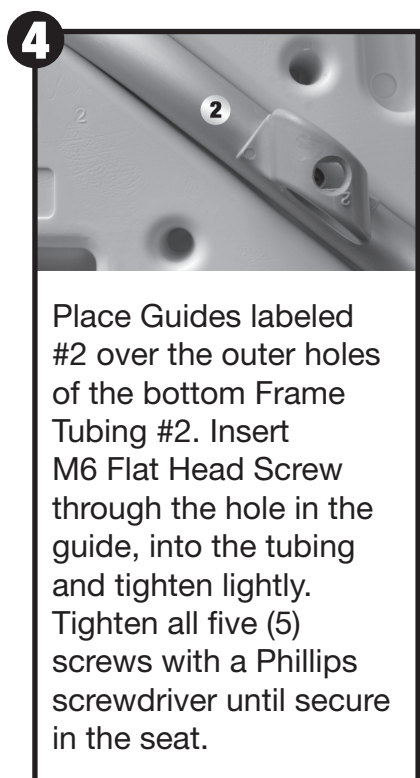
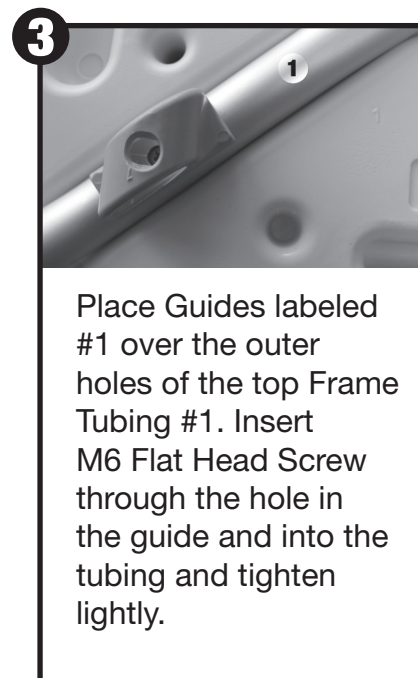
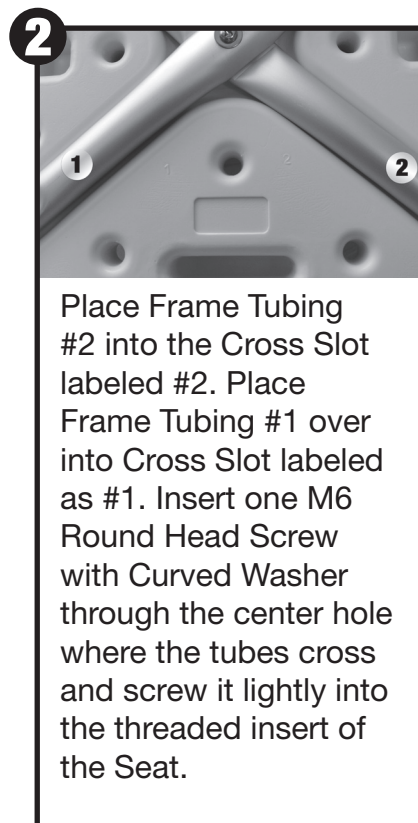
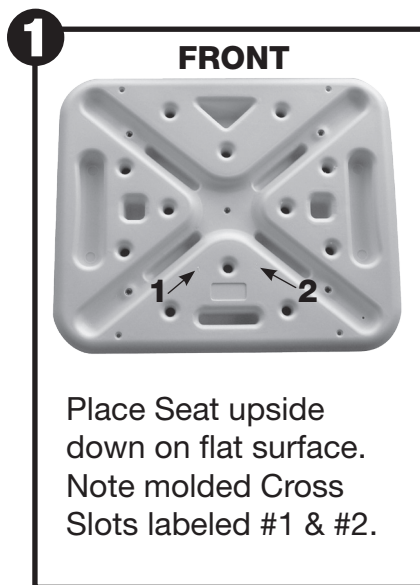
M6 FLAT HEAD
SCREW (4 EA.)



ATTENTION

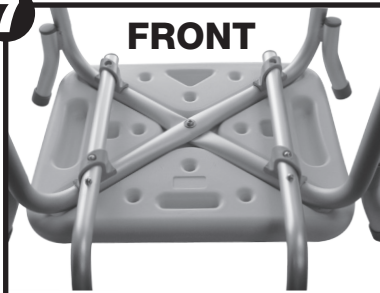
Please verify that all components are included as shown in the picture above, before proceeding with assembly.

Assembly Instructions



7

FRONT



Slip the Back Rest Support Tubing into Back Rest Guides from the back side of the seat. Press the gold locking buttons on the Back Rest Support Tubing through the Back Rest Guides until the button snaps into the hole of the guide.

- **Note the two locking buttons on each Back Rest Support Tubing, which will allow for two positions for the Back Rest.**

8



Slide Adjustable Leg over outer frame tubing. To set desired height push gold button on frame while simultaneously sliding adjustable leg down the length of the Frame Tubing. Once you have reached your desired height, the gold button should fully protrude through the hole. Repeat for all four adjustable legs.

9



Flip the bench over and verify all legs are touching floor and the bench is level and stable.

10



Attach both Arm Rests into the Frame Tubing and lock in place with the gold locking buttons.

11



View of fully assembled B3011 Bath Bench with Back.



Warning!

- **Before using, be sure that all gold locking buttons fully protrude thru holes of each Guide and holes of all Adjustable Legs and Arm Rests.**
- **Make sure all Adjustable Legs are snapped in the same hole position.**
- **After first use, retighten all M6 Screws using a Philips screwdriver.**

Essential Medical Supply, Inc. Limited Warranty

Essential Medical Supply, Inc. ("Essential") warrants its products free from defects in materials and workmanship ("Warranty") for a Limited Lifetime from the date of purchase ("Warranty Period"). The Warranty extends only to the original purchaser of Essential products. If within the Warranty Period there is a breach of Warranty as to an Essential product, such product shall be repaired or replaced at Essential's sole discretion. This Warranty does not include any labor or shipping costs incurred in replacement, part installation, or repair of any Essential product. ESSENTIAL'S SOLE OBLIGATION AND YOUR EXCLUSIVE REMEDY UNDER THIS WARRANTY SHALL BE LIMITED TO REPAIR AND/OR REPLACEMENT OF THE DEFECTIVE ESSENTIAL PRODUCT.

For Warranty service, please contact the dealer from whom you purchased your Essential product. In the event you do not receive satisfactory Warranty service, please write Essential directly at:

Essential Medical Supply, Inc.
Customer Service Department
6420 Hazeltine National Drive
Orlando, FL 32822-5121

Please provide the dealer's name, address, and date of purchase, and indicate the nature of the problem and the Essential product serial number.

Upon receipt of written notification, Essential will issue a return authorization. The defective unit or parts must be returned to Essential for Warranty inspection using the serial number as identification within thirty (30) days of the date of return authorization. DO NOT return products to Essential without Essential's prior written consent. Cash on delivery shipments will be refused and shipping charges must be prepaid.

Limitations and Exclusions: The Warranty shall not apply to products if 1) the Essential serial number has been removed or defaced; 2) the product has been damaged by negligence, accident, improper operation, maintenance or storage; and/or 3) the product has been modified without Essential's express written consent or repaired by an unauthorized third-party ("Warranty Disqualifying Events"). The Warranty Disqualifying Events include but are not limited to the addition of unauthorized parts or attachments or damage caused by circumstances beyond Essential's control, the occurrence of which shall be determined exclusively by Essential. The Warranty also shall not apply to problems or defects arising from normal wear and tear on Essential products and parts, including but not limited to rubber tips and hand grips, and failure to adhere to user instructions and safety precautions.

THE WARRANTY STATED HEREIN IS THE SOLE AND EXCLUSIVE WARRANTY OFFERED BY ESSENTIAL. THERE ARE NO OTHER WARRANTIES RESPECTING ESSENTIAL'S PRODUCTS, EITHER EXPRESS OR IMPLIED, INCLUDING BUT NOT LIMITED TO ANY WARRANTY OF DESIGN, MERCHANTABILITY, OR FITNESS FOR A PARTICULAR PURPOSE, EVEN IF ESSENTIAL HAS BEEN INFORMED OF SUCH PURPOSE. NO AGENT OF ESSENTIAL IS AUTHORIZED TO ALTER OR EXCEED ESSENTIAL'S WARRANTY OBLIGATIONS AS SET FORTH HEREIN. ESSENTIAL SHALL NOT BE RESPONSIBLE FOR ANY INDIRECT, INCIDENTAL, SPECIAL, OR CONSEQUENTIAL DAMAGES ARISING OUT OF USE OF ESSENTIAL PRODUCTS.

Product Serial No. _____