

Spectrum® 125C

Issued Nov. 2012 • Index No. PC/13.0

**Air Plasma
Cutting** 

Quick Specs

Industrial Applications

HVAC
Sheet Metal
Auto Body Repair
Home Hobby

Process

Air Plasma Cutting

Rated Output 12 A at 110 VDC, 35% Duty Cycle

Max. Open-Circuit Voltage 375 VDC

Weight 31 lb. (14.1 kg)

The Power of Blue.®

Portable for all your applications.

Spectrum® 125C comes complete with built-in heavy-duty compressor and only weighs 31 pounds, offering the operator a high level of portability and convenience.

LVC™ line voltage compensation

provides peak performance power under variable input voltage conditions (98–132 V) for steady cuts and cleaner ending cuts.

35 percent duty cycle is tested at 104° Fahrenheit (40° C) to give you the cutting power whenever you need it.

No high-frequency starts that can interfere with or damage controls or computers.

Auto-Refire™ technology provides ultimate customer convenience by automatically controlling the pilot arc when cutting expanded metal or multiple pieces of metal. The pilot arc will switch in and out as fast as needed when cutting expanded metal and provides maximum power for cutting thicker metal — all automatically! No need for manual re-triggering which reduces user hand fatigue.



Comes Complete With:

- ICE-12C hand-held torch with 20-ft. (6.1 m) cable
- Work clamp with 20-ft. (6.1 m) cable
- 10-ft. (3 m) power cord
- Extra consumables (2 electrodes and 2 tips)

Built-in, heavy-duty industrial piston-driven compressor provides long life and superior airflow.

Constant output cutting power. The constant-current design offers a consistent 12-amp cutting arc for continuous quality cutting up to 1/8-inch steel.

ICE-12C torch with 20-foot (6.1 m) cable is ergonomically built and includes drag tips for convenient cutting on all metals.

Can be powered by any Miller engine drive with generator power (e.g. Bobcat™) or equivalent competitive equipment.



Power source is warranted for 3 years, parts and labor.
ICE torch is warranted for 1 year, parts and labor.



Miller Electric Mfg. Co.
An Illinois Tool Works Company
1635 West Spencer Street
Appleton, WI 54914 USA

Equipment Sales US and Canada
Phone: 866-931-9730
FAX: 800-637-2315
International Phone: 920-735-4554
International FAX: 920-735-4125

Website
MillerWelds.com



Specifications (Subject to change without notice.)



Rated Output	Max. Open-Circuit Voltage	Amps Input at Rated Output, 60 Hz, 1-Phase			Dimensions	Weight with Torch
		120 V	KVA	KW		
12 A at 110 VDC, 35% duty cycle	375 VDC	20	2.4	2.0	H: 13.5 in. (343 mm) W: 8.5 in. (216 mm) D: 16 in. (406 mm)	Net: 31 lb. (14.1 kg) Ship: 36.5 lb. (16.6 kg)

Note: 120 V, 20 A individual branch circuit is required to operate unit at or above rated cut capacity for an extended period of time.

Certified by Canadian Standards Association to both the Canadian and U.S. Standards.

Mild Steel Cutting Capability (Thickness to scale.)



12 ga. (2.7 mm) at 35 IPM



1/8 in. (3.2 mm) at 10 IPM

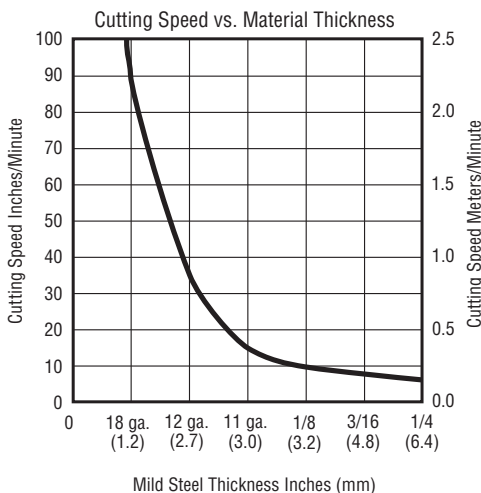
Note: Recommended maximum piercing capacity for hand-held applications is 12 gauge (2.7 mm). For aluminum and other metals with high thermal conductivity, cutting capacities will be derated as much as 30%.

Rated cut capacity is based on traveling approximately 10 inches per minute to achieve a steady, precise cut. This is the key rating that should meet or exceed your typical cutting thickness requirements.

Cutting Performance

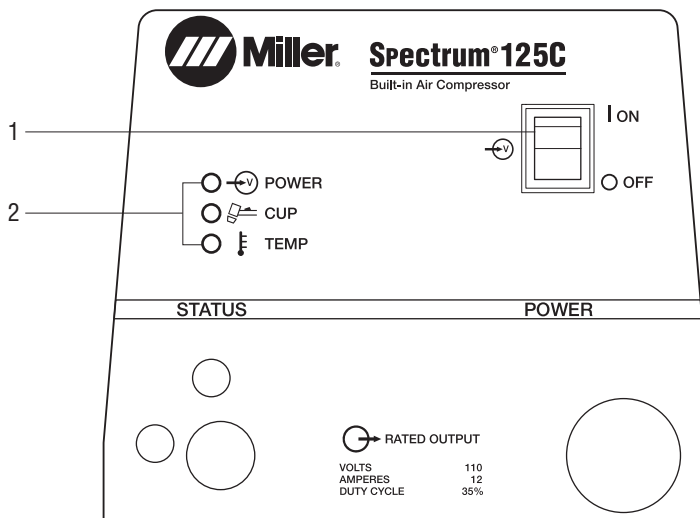
To determine the maximum rated cutting thickness of mild steel, follow the line from the 10 IPM (inches per minute) point on the cutting chart. The point at which this line intersects the cutting curve determines the maximum recommended production cutting thickness of the unit.

Note: The rating is based on 10 IPM because this is the minimum speed at which the operator achieves a smooth, steady cut when using a hand-held torch.

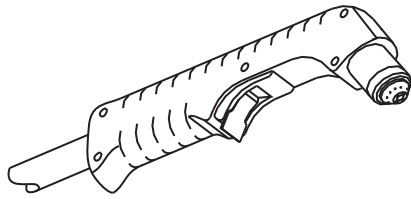


Control Panel

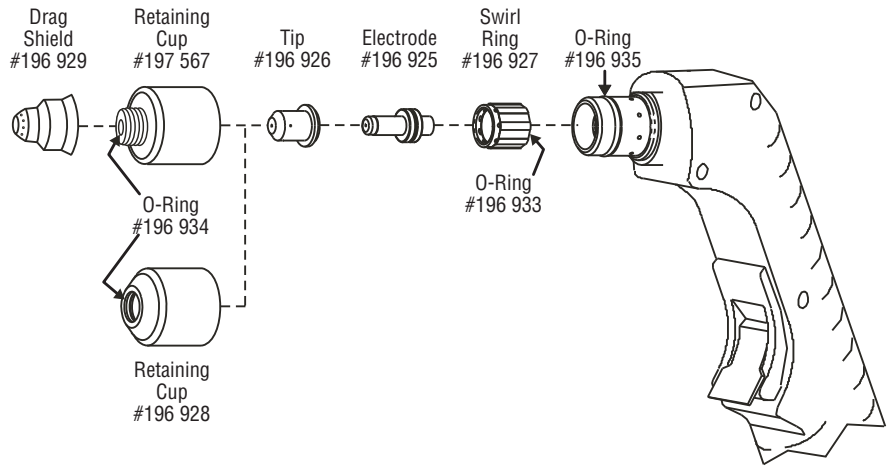
1. Power Switch
2. Status and Troubleshooting Lights



Replacement Torch and Consumables



ICE-12C Hand-Held Torch
#245 728 20 ft. (6.1 m)



Genuine Miller® Accessories



No. 30B Economy Cart with Cord Wrap
#300 511

This economical running gear includes a cord wrap and provides mobility with an angle for easy front panel access and extra storage space.



Protective Cover #195 144
Attractive, mildew-resistant, odor-free, waterproof cover protects your machine's finish.

Miller Service Parts Accessories

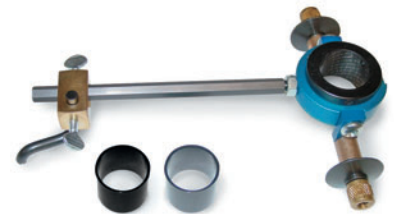
The following accessories must be ordered from Miller Service Parts.



ICE-12C Consumable Kit #222 938
Consumable kit includes 4 electrodes, 4 tips, 1 cup, 1 drag shield, 1 o-ring and silicone grease.



Plasma Standoff Roller Guide #253 054
Helps maintain recommended standoff distance to maximize cutting performance and improve tip life.



Plasma Circle-Cutting Guide #253 055
Cut straight lines or circles up to 12-inch diameter with ease.



Suction/Magnetic Pivot Base #195 979
Add this to your cutting guide for convenient attachment to all flat surfaces. The extended arm accommodates holes up to 30-inch diameter.



MIG Gloves
#249 175 Medium
#249 176 Large
#249 177 X-Large

Breathable pignit back with genuine American deerskin palm for ultimate comfort. Moisture-wicking fleece lining provides additional protection.



Multi-Purpose Gloves
#249 184 Medium
#249 185 Large
#249 186 X-Large

Breathable pignit back with top grain cowhide palm for excellent heat protection. Moisture-wicking mesh lining and padded palm.

Ordering Information

Power Source	Stock No.	Description	Qty.	Price
Spectrum® 125C	#907 149	120 VAC, 60 Hz, with 20-ft. (6.1 m) ICE-12C hand-held torch plus 2 extra electrodes and 2 extra tips		
Replacement Torch and Consumables				
ICE-12C Hand-Held Torch	#245 728	20 ft. (6.1 m). <i>Order from Miller Service Parts</i>		
Consumables		See page 3. <i>Order from Miller Service Parts</i>		
Accessories				
No. 30B Economy Cart with Cord Wrap	#300 511			
Protective Cover	#195 144			
ICE-12C Consumable Kit	#222 938	Includes 4 electrodes, 4 tips, 1 cup, 1 drag shield, 1 o-ring, and silicone grease. <i>Order from Miller Service Parts</i>		
Silicone Grease	#252 951	<i>Order from Miller Service Parts</i>		
Plasma Standoff Roller Guide	#253 054	<i>Order from Miller Service Parts</i>		
Plasma Circle-Cutting Guide	#253 055	<i>Order from Miller Service Parts</i>		
Suction/Magnetic Pivot Base	#195 979	<i>Order from Miller Service Parts</i>		
MIG/Multipurpose Gloves		See page 3. <i>Order from Miller Service Parts</i>		

Date: _____ **Total Quoted Price:** _____



Distributed by: