

Beta Sit/Stand Cart



In Stock



Projector shelf

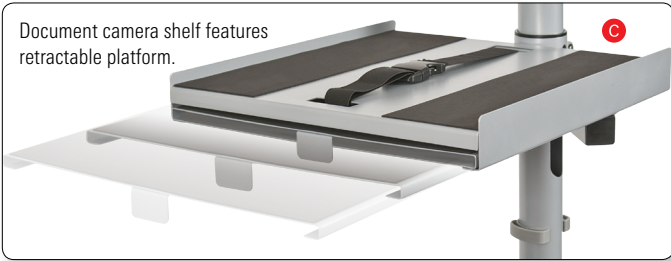
Document camera shelf

Laptop/keyboard shelf

CPU holder includes adjustable straps to accommodate a variety of models.

Center post works as a hub for a variety of accessories. Each accessory is independently height-adjustable.





Document camera shelf features retractable platform.



Beta Sit/Stand Cart

- With the Beta Sit/Stand Cart you can improve your energy and efficiency by standing or sitting as you work, and switch positions as you choose.
- Mobile configuration brings flexibility into the workspace. Easily moves through small doorways and over thresholds for collaborative meetings. Works equally well as an A/V cart or as a compact mobile workstation, ideal for maneuvering in tight quarters.
- Center post works as a hub for equipment shelves, monitor mounts, and CPU holder, each independently height adjustable. Cable management clips keep cords under control.
- Includes single monitor mount for a monitor up to 22". Allows up to 35° of tilt, and 25° of pan adjustment.
- Includes angled laptop/keyboard shelf (18 3/4" x 13 3/4") with a mouse platform (6 1/4" x 6 3/4") that swivels beneath when not in use.
- Included CPU holder has two adjustable security straps, holding securely to a variety of CPU configurations.
- Optional projector shelf measures 15" x 11" and includes an adjustable equipment security strap.
- Document camera shelf measures 15" x 13 5/8", includes an adjustable equipment security strap, and a retractable platform (13 1/2" x 8 5/8") for projection materials.
- All shelves feature non-slip EVA pads.
- Optional dual monitor mount accommodates two monitors up to 22". Allows up to 35° of tilt, and 25° of pan adjustment. Handy knobs adjust the space and angle between monitors.



Shelves are easy to adjust and secure in place. Built-in cable management conduits keep cords under control.

A. Beta Sit/Stand Cart		
Part No.	Dimensions	Ship Wt.
■ 27614	67"H x 32"W x 33"D	49 lbs
B. Optional Projector Shelf		
Part No.	Dimensions	Ship Wt.
■ 27619*	15"W x 11"D	7 lbs
C. Optional Document Camera Shelf		
Part No.	Dimensions	Ship Wt.
■ 27618*	15"W x 13 3/4"D	11 lbs
D. Optional Dual Monitor Mount		
Part No.	Dimensions	Ship Wt.
■ 27617*	up to 22" monitors	9 lbs

Made in China.
*Ships UPS



Balt® & Best-Rite® are brand divisions of MooreCo Inc.

2885 Lorraine Ave | Temple, TX 76501
p: 800.749.2258 | f: 800.697.6258

www.moorecoinc.com