

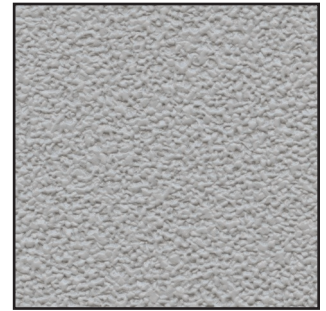
# PremaTak

---

- Great for all your design needs in classroom, hospitality and office environments
- Vinyl material retains resiliency so pin holes seem to disappear
- Material features a fabric backing for durability
- Washable Surface
- Available in ten designer colors
- Your choice of aluminum framing or decorative vinyl wrapped edge
- Backed by Ghent's 10-year guarantee



**Silver 193**



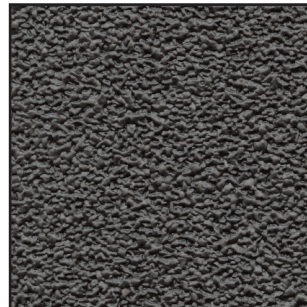
**Stone 199**



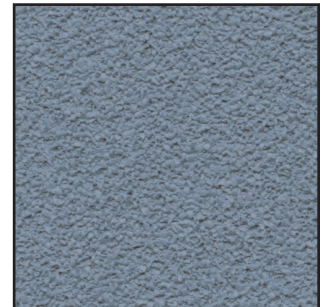
**Caramel 181**



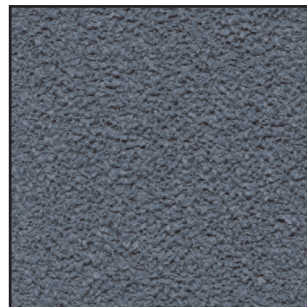
**Ivory 185**



**Ebony 183**



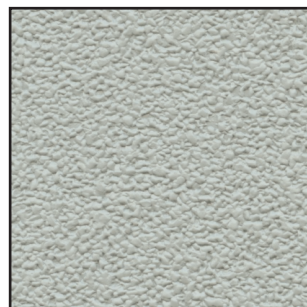
**Ocean 191**



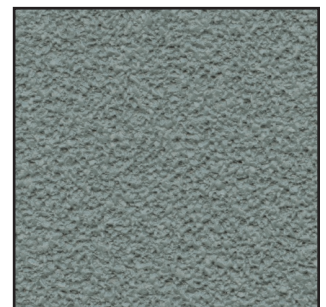
**Navy 195**



**Berry 187**



**Mint 189**



**Spruce 197**



2999 Henkle Drive • Lebanon, Ohio 45036  
800.543-0550 • [www.ghent.com](http://www.ghent.com)

	<u>US Weights</u>	<u>Metric Units</u>
<b>Total Weight</b>	12.0 oz PLY	372 g PLM
<b>Roll Width</b>	53/55 on.	134/139 cm
<b>Gauge</b>	19 Mils	0.48 mm
<b>Fabric</b>	Sheeting (or Scrim)	
<b>Tensile (Minimum)</b>	40 x 30 lb <sub>f</sub>	178 x 133 in
<b>Tear (Minimum)</b>	14 x 12	
<b>Federal Spec</b>	CCC-W-408A, Type I	
<b>CFFA Spec</b>	CFFA-W-101-D, Type I	
<b>Fire Testing</b>	NFPA 101 <sup>®</sup> Life Safety Code <sup>®</sup> NFPA 255 (UL723, CAN S102M) Tunnel Test <sup>1</sup> Class A Rating NFPA 286 Corner Burn Test <sup>2</sup> Meets requirements for Flame Spread, Smoke Developed and Flashover  UL Labeled and Listed	
<b>Repeat</b>	Vertical Horizontal Match Information	N/A N/A Random Match, Reverse Hang

1 When applied to GRC Board with A-848-B adhesive

2 When applied to 5/8" Type-X gypsum board with A-848-B adhesive

