

# HOLTKÖTTER INTERNATIONAL, INC.

155 Hardman Avenue South, South St. Paul, MN 55075

fax: (888) 552-8661 • phone: (800) 899-5444

www.holtkoetter.com

e-mail: customerservice@holtkoetter.com

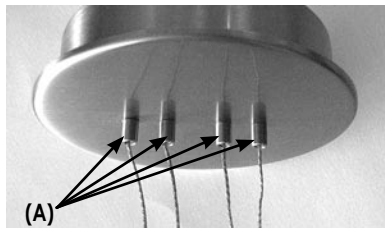
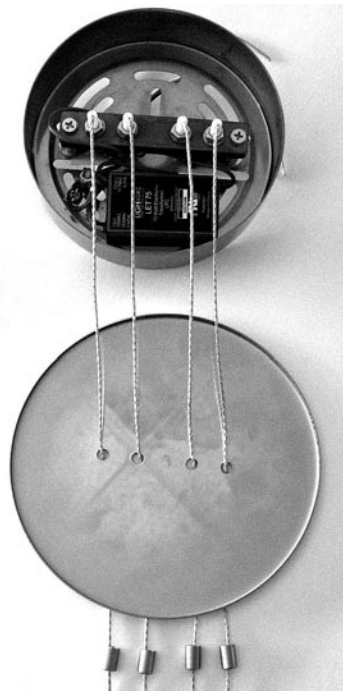
## Please make sure that the following parts for your fixture are enclosed:

1. Fixture with backplate and hanging hardware.
2. Bulb: 50 Watt Halostar IRC by Osram, GY6.35 base
3. Allen Wrench
4. Wire Crimps (2 each)
5. Glass
6. Plastic Nut Driver
7. If a dimmer is required, it is recommended that a Lutron ELV (Electronic Low Voltage) dimmer be used.

**It is recommended that this fixture be installed and hung by a licensed electrician.**

## HANGING INSTRUCTIONS

1. Be sure to disconnect the power to the outlet box.
2. Unscrew the four (4) stem screws (A) below the backplate, allowing access to the crossbar strap and mounting plate.
3. Connect the wires and ground wire according to generally accepted electrical standards.
4. Screw the crossbar strap/mounting plate to the outlet box.
5. Secure the backplate to the fixture by screwing the four (4) stem screws back into place.



## ASSEMBLY INSTRUCTIONS FOR Low-voltage Pendant No. 5701/1



5701/1 B10



5701/1 B20

## Care Instructions

Use only a soft, dry cloth to clean. If necessary, a slightly damp, soft cloth can be used to spot clean. Do not use common household cleaners on lamps or fixtures, as the lacquer on the outside of the brass may be damaged as a result. Enjoy your new Holtkötter lamp.

# HOLTKÖTTER INTERNATIONAL, INC.

www.holtkoetter.com  
e-mail: customerservice@holtkoetter.com

## BULB INSTALLATION / REPLACEMENT

### CAUTION: DISCONNECT POWER BEFORE SERVICING.

Install the bulb into the socket. Be sure to use the plastic wrap provided with the new bulb to ensure long bulb life. Push the bulb firmly into the socket.

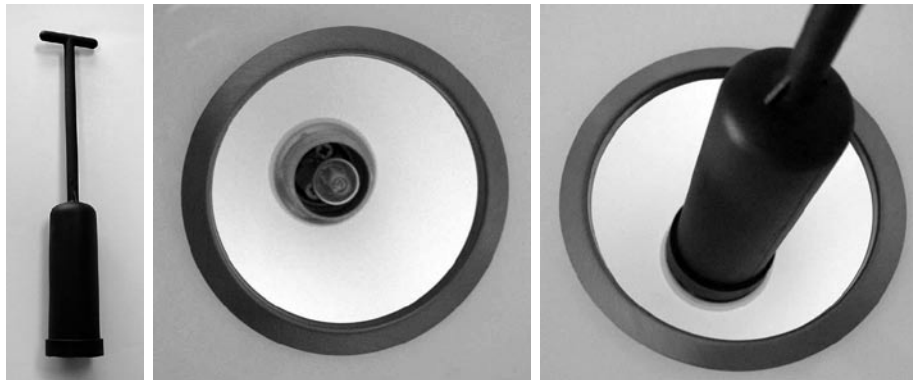
The recommended replacement bulbs for this fixture are 50 Watt Halostar IRC bulbs by Osram.

Use of other brands of unknown quality may cause a risk of overheating.

Holtkötter Item No. 9250\*050-HSTAR

## GLASS INSTALLATION

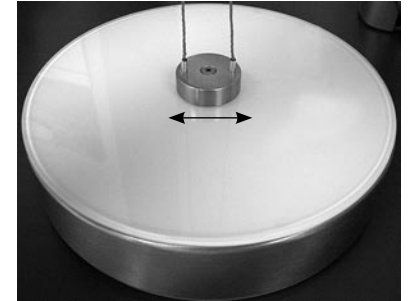
Slide the glass over the socket. Using the plastic nut driver provided, insert the nut driver on the inside of the glass and tighten the nut until the glass is snug against the fixture.



# ASSEMBLY INSTRUCTIONS FOR Low-voltage Pendant No. 5701/1

## GLASS INSTALLATION, continued

Please note: if the glass doesn't hang straight, the socket may be adjusted slightly within the hole of the glass. Once readjusted, be sure to tighten until secure.



## HEIGHT ADJUSTMENT

The height of this fixture can be adjusted at any time.

1. Hold the weight of the glass off the cables.
2. Squeeze the center adjustment bar together to release the cables. (A)
3. Adjust the height.
4. Release the center adjustment bar when the height is acceptable.



## CABLE LENGTH ADJUSTMENT

1. Be sure to support or remove the glass reflector prior to shortening the cables.
2. Using the allen wrench provided in the packet with the bulb and wire crimps, loosen each side of the counter-weight to release the cable from the fixture. (B)
3. Cut the cable to the correct length on each side.
4. Slide the wire crimps over the cut end of the cable and crimp to secure. If the wire crimp is too long to fit completely into the counter-weight, cut off a small amount and re-fit.
5. Insert the cable back into the counter-weight and tighten the set screws with the allen wrench. The set screw should tighten flush to the fixture. (C)

