

# Wall Umbrella Assembly Instructions

**! WARNING:** ADULT ASSEMBLY REQUIRED. CONTAINS SMALL PARTS, SHARP POINTS AND EDGES. UMBRELLA SHOULD BE CLOSED DURING EXTREME WEATHER CONDITIONS, INCLUDING WIND, RAIN, AND SNOW.

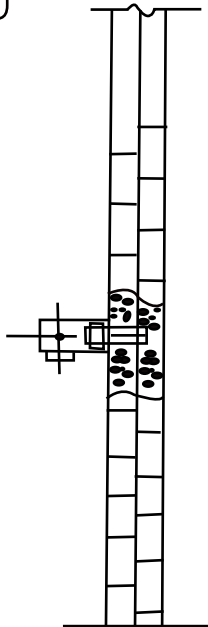
**IMPORTANT NOTE:** Mounting hardware is not included. Professional installation is strongly recommended in order to determine the appropriate hardware for your specific mounting surface.

1



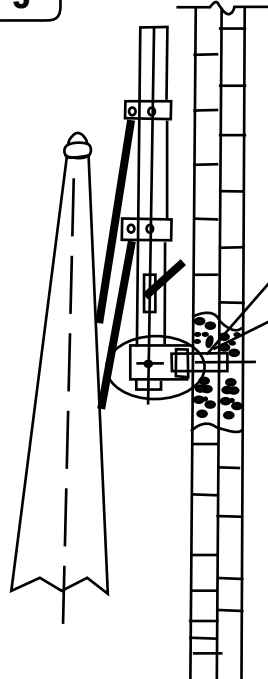
Tighten the plastic cap onto umbrella top.

2



Mount bottom holder on the wall at a desirable height.

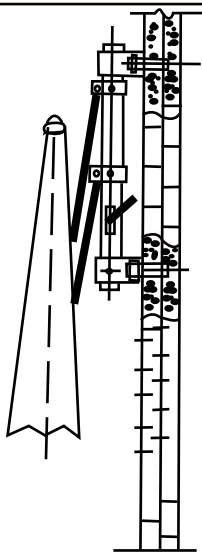
3



Place umbrella into bottom holder as shown.

Insert latch attached to bottom holder into umbrella pole. There are 3 holes on umbrella pole for 3 adjustable positions.

4



Insert top holder onto umbrella pole.

Mount top holder on the wall.

5

Check and make sure all bolts are fastened tightly. Your umbrella is now ready to use.

**IMPORTANT:** Periodically check all connections on your umbrella to make sure they are tight and secure. Retain these instructions for future reference.

## Fabric Cleaning/Care:

See attached Sunbrella® care instructions.

Thank you for your purchase.

If you experience difficulties with this product,  
do not return to the place of purchase.

Please contact CRI2000, L.P., and we will replace defective  
or missing parts free of charge (Continental US only).

For customer service inquiries,  
or to see our full range of related products, visit us at:

www.cri2k.com WEB  
into@cri2k.com EMAIL