

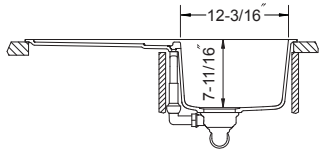
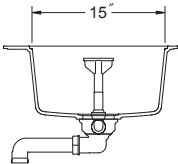
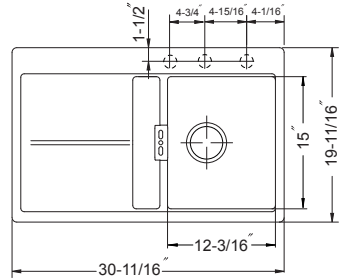
SCHOCK ◀ HOUZER
Single Bowl with Drainer board
Model Horizont D-100



Horizont D-100

FEATURES

- **CRISTADUR®**
- 7-11/16" depth • Dual mount (Topmount, Undermount or Flush mount)
- Exclusive overflow system (supplied with the sink)
- Intrinsically hygienic Non-porous surface
- Antibacterial protection with silver ion Antibac®
- Silky to the touch, 3 times harder than natural granite
- Food-safe, UV-stable-will not fade
- Heat resistance to +500°F
- Highest resistance to thermal shock, scratches and chips
- Color-fast throughout • Pre-scored up to 3 faucet holes
- Fits 24" sink base • cUPC listed
- Supplied with cutout template, fasteners and instructions
- Lifetime Limited Warranty



OPTIONAL ACCESSORIES

- Bottom Grid: 629706
- Glass Chopping board: 629076
- Strainer Options: Stainless steel strainers, Color strainers, Color disposal flanges

OVERALL DIMENSIONS	EACH BOWL	CUTOUT SIZE	PACKAGING*	WEIGHT*
30-11/16" x 19-11/16"	12-3/16" x 15"	See Template	1/10 pcs.	38/420lbs.

*Standard packaging: Single boxed /Pallet of single boxed.
All dimensions are in inches. Specifications subject to change without notice.

Available Colors



Project/Job name
Architect/Engineer
Contractor
Model
Notes

Q'ty