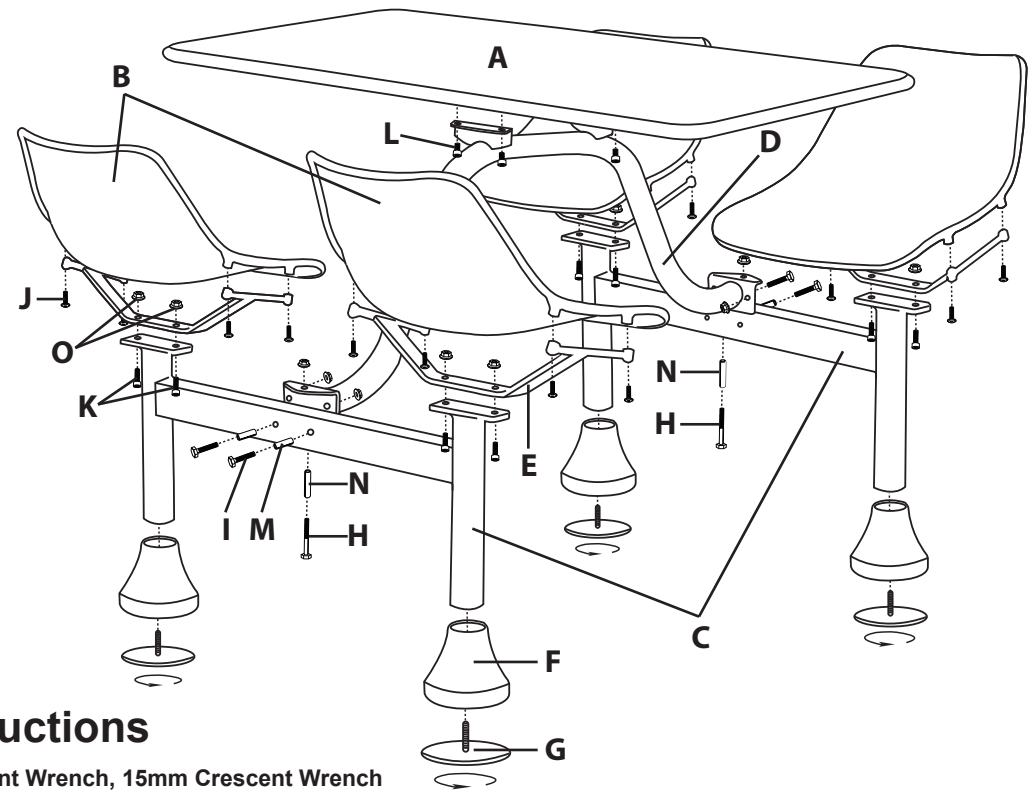
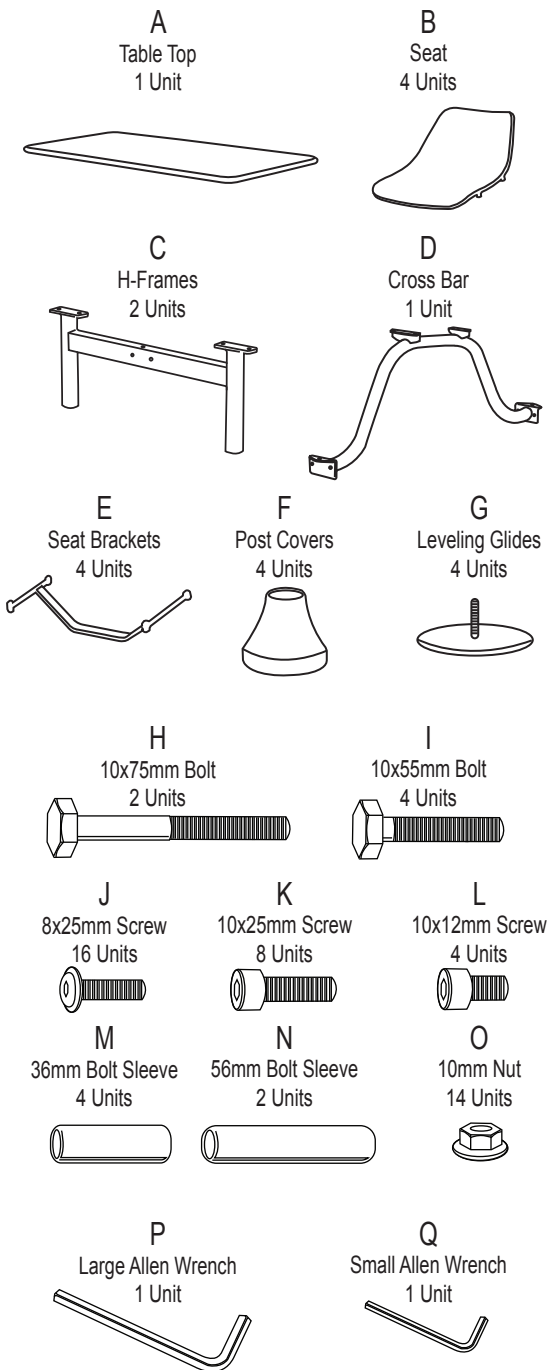


Model 1002 / 1003 / 1004 / 1005 Group/Cluster Tables

Parts Listing



Assembly Instructions



Tools Needed: 18mm Crescent Wrench, 15mm Crescent Wrench
Please read all instructions before assembly.

Step 1: Slide Post Covers (F) onto legs of H-Frames (C) as shown.

Step 2: Screw Leveling Glides (G) into the bottom of legs of the H-Frames (C).

Step 3: Align holes in H-Frames (C) with corresponding holes in the Cross Bar (D). Insert 10x75mm Bolt (H) through 56mm Bolt Sleeve (N) and into aligned holes in H-frames (C) and Cross Bar (D). Secure with 10mm Nut (O). Insert 10x55mm Bolt (I) through 36mm Bolt Sleeve (M) and into the aligned holes in the H-Frames (C) and Cross Bar (D) as shown. Secure with 10mm Nut (O) using wrench.

Step 4: Align Seat Brackets (E) with H-Frames (C) and attach with 10x25mm Screw (K) and 10mm Nut (O) using Large Allen Wrench (P) that is provided.

Step 5: Align Seats (D) with Seat Brackets (E) and attach with 8x25mm Screw (J) using Small Allen Wrench (Q).

Step 6: Align Table Top (A) with Cross Bar (D) and attach with 10x12mm Screw (L) using Large Allen Wrench (P).

Assembly Notes:

During assembly, hand tighten screw only when all screws are in place, you may then tighten all screws completely.

CAUTION:

1. Do not use this chair as a step ladder.
2. Check for loose screws and tighten them every 6 months.

ofm
Furniture For The Real Office™

161 Tradition Trail Holly Springs, NC, 27540
800-520-7471 (voice) 919-362-4765 (fax)
919-303-6389 (voice) www.ofminc.com
support@ofminc.com 07.01.2010