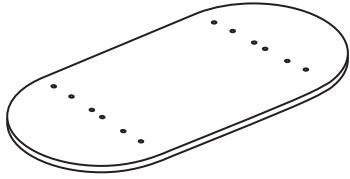


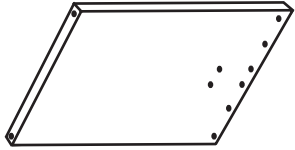
# Model T3672RT / T4896RT Racetrack Conference Table

## Parts Listing

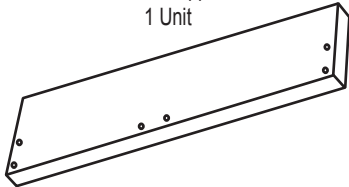
A  
Table Top  
1 Unit



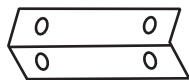
B  
Leg  
2 Units



C  
Center Support  
1 Unit



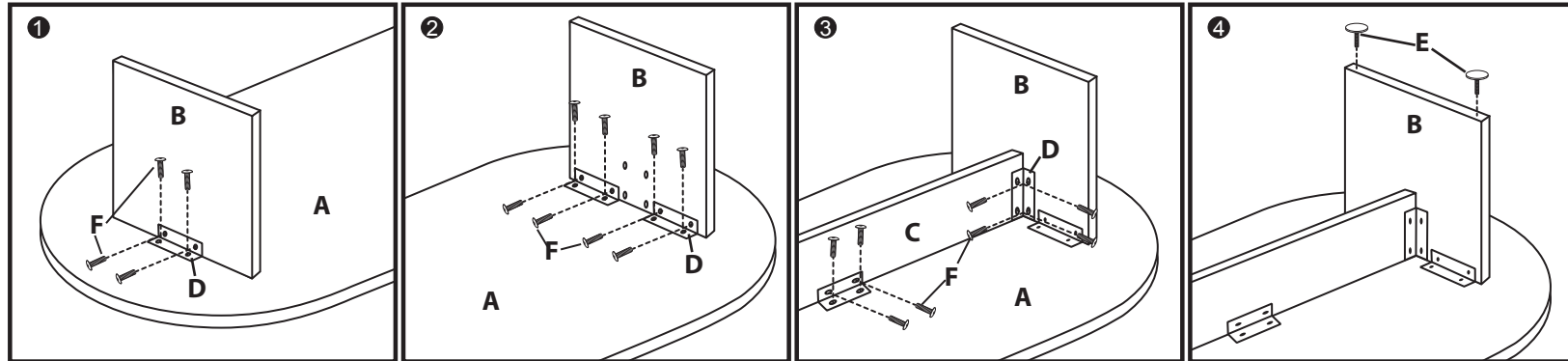
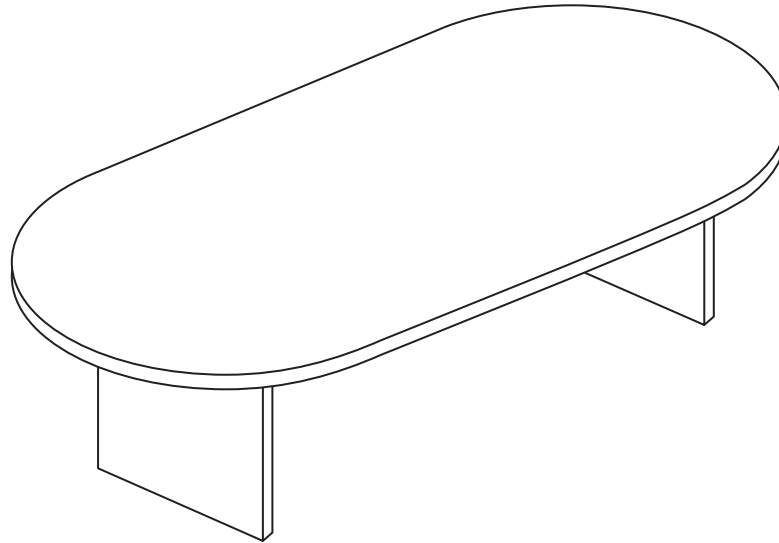
D  
L-Bracket  
12 Units



E  
Leveling Glide  
4 Units



F  
6x16mm Screw  
48 Units



## Assembly Instructions



**Tools Needed: Phillips Head Screwdriver**  
*Please read all instructions before assembly.*

**Step 1:** Place Table Top (A) face-down on carpet or padded work surface. Note direction of grain on woodgrain models. Attach Legs (B) to the Table Top (A) by aligning the holes on the outside of the Legs. Insert Screws (F) through the L-Bracket (D) and into the Top and the Leg as shown. Do this for both Legs. Only hand tighten screws.

**Step 2:** Secure Legs (B) to the Table Top (A) by aligning the holes on the inside of the Legs, and inserting Screws (F) through the L-Brackets (D) and into the Top and the Leg as shown. Do this for both legs. Only hand tighten screws.

**Step 3:** Attach Center Support (C) by aligning perpendicularly with the Legs (B) as shown, and inserting Screws (F) through the L-Brackets (D) on all four corners of the Support. Secure Center Support (C) to Table Top (A) by inserting Screws (F) through L-Brackets (D) and into the Top. Securely tighten all screws.

**Step 4:** Insert Leveling Glides (E) into the base of both Legs (B).

### Assembly Notes:

During assembly, hand tighten screws only. When all screws are in place, you may then tighten all screws completely.

### CAUTION:

1. Do not use this table as a step ladder.
2. Check for loose screws and tighten them every 6 months.

**ofm**<sup>U</sup>  
Furniture For The Real Office™

161 Tradition Trail Holly Springs, NC, 27540  
800-520-7471 (voice) 919-362-4765 (fax)  
919-303-6389 (voice) www.ofminc.com  
support@ofminc.com