

Wyndham One Door Two Drawer Vanity

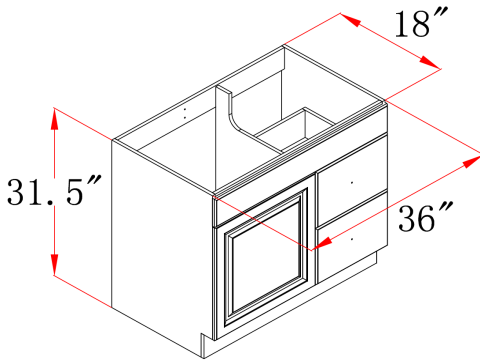


Specifications

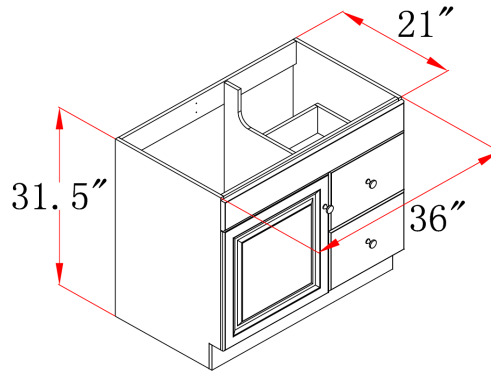
- Cam-lock connectors for fast & easy assembly
- Durable thermofoil, full overlay door design
- Easy glide drawer glides
- Frameless design for increased storage space and accessibility
- Silver finish hardware
- White Semi-Gloss finish
- Vanity top sold separately



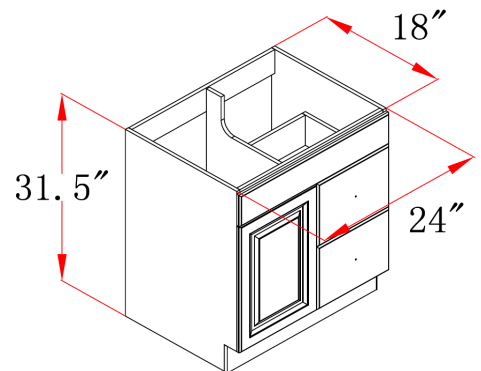
Dimensions



531806



531954



545004

Warranty & Compliances

Warranty Limited 1 year warranty
California 93120 Compliant



Order Codes & Finishes/Colors

36" w x 18" d x 31.5" h	531806
36" w x 21" d x 31.5" h	531954
24" w x 18" d x 31.5" h	545004

Type:
Job:
Order Code:
Approvals:

Design House reserves the right to make changes in materials, specifications & models at any time. Design House also reserves the right to discontinue product without notice or obligation.