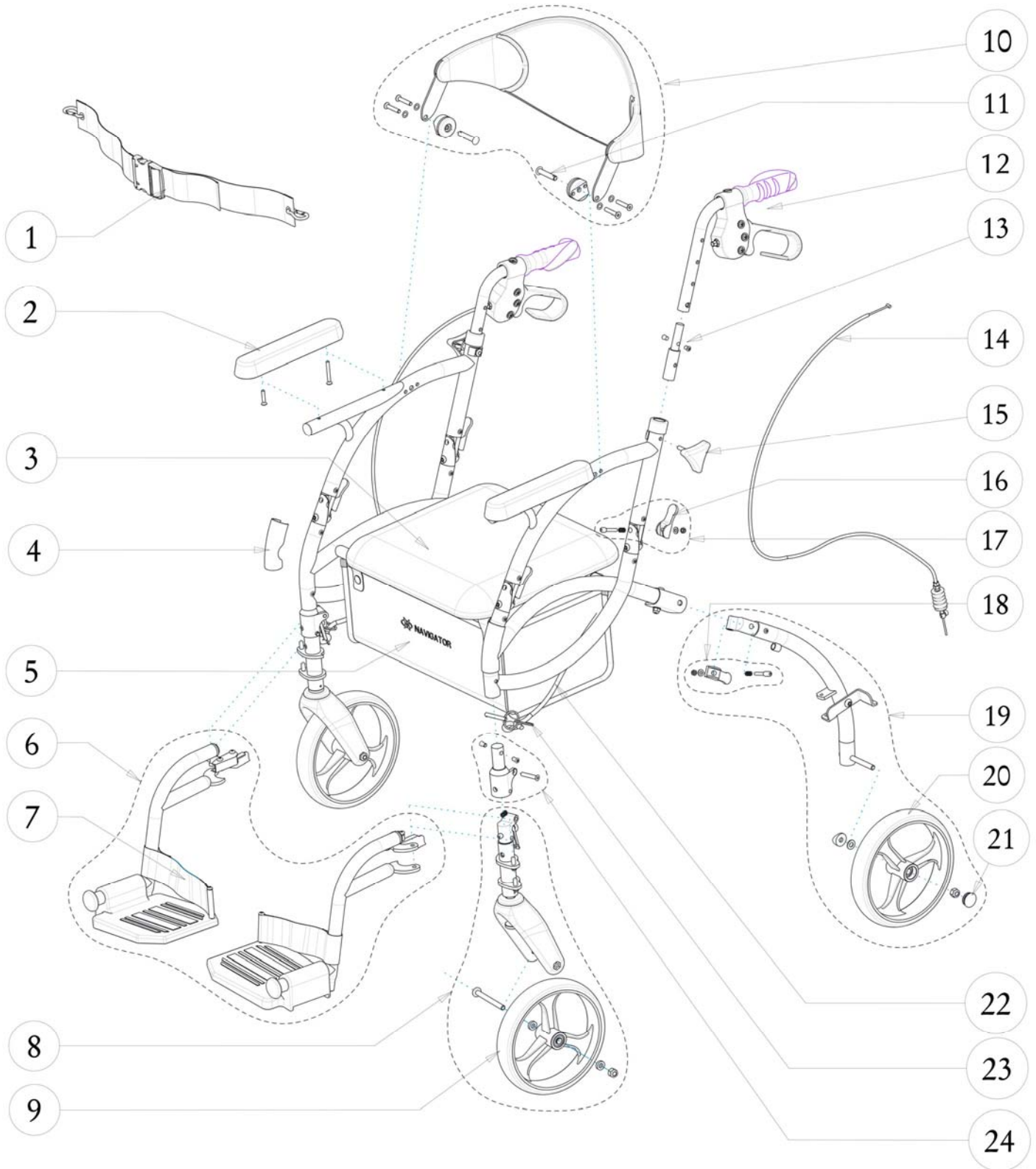


793-942 (CRANBERRY) HUGO NAVIGATOR



793-942 (CRANBERRY) HUGO NAVIGATOR

Item #	AMG Part #	Item Description	Qty Per Unit	Sold by	UOM
1.	A01-831	Seatbelt with end-clips, Black	1	1	EA
2.	B01-951	Armrests with Hardware, L&R (2 Black Arm Pads, 4 Flat Philips Screws: 2 M5x30mm + 2 M5x40mm)	1	1	PR
3.	B01-931	Black Vinyl Seat 370 x 340 mm with Hardware (2 Brackets, 4 Round Philips Screws M5x15mm and 4 Washers)	1	1	EA
4.	A01-861	Protect-Front Leg, Black Plastic - 2 ea / set	1	1	ST
5.	A01-821	Under-Seat Bag w/Hugo Logo, Black	1	1	EA
6.	B01-980CR	Detachable Swing-Away Footrests, Pacific-Blue, L&R	1	1	PR
7.	B01-991	Heel Loops - 2ea / set	1	1	ST
8.	B01-910CR	Front Leg Complete with Fork & Wheel, Pacific-Blue, L&R	1	1	PR
9.	B01-146	8"x1.4" Hugo Front Wheel (Solid Tire, 3 Spokes Hub, Bushing & 2 Bearings)	2	1	EA
10.	B01-902	Black Backrest with Hardware (2 Brackets, 2 Holding Pins, 4 Screws & 4 Washers)	1	1	EA
11.	A01-801	Backrest Holding Pin - 2 ea / set	1	1	ST
12.	B01-961	Black Handle Bar with Brake Grip Assy, L&R	1	1	PR
13.	B01-966	Handle Extension Tubes and Hardware (2 Tubes & 4 Set Screws M6)	1	1	ST
14.	B01-941	Brake Cable & Sleeve Assembly (Cable, Sleeve, Adjustment Screw, Spring, Spring Sleeve, Cable Stopper with Screw M5x6mm & Fishtail Stopper), L&R	1	1	PR
15.	A01-415	Triangular Knob, M6x30mm	2	1	EA
16.	A01-401	Plastic Lever for Folding Mechanism, Black - 2 ea / set	3	1	ST
17.	B01-925	Armrest Release Folding Mechanism (4 Plastic Lever, 4 Pins, 4 Springs, 4 Washers & 4 Locknuts)	1	1	ST
18.	B01-926	Rear Leg Release Folding Mechanism (2 Plastic Lever, 2 Pins, 2 Springs & 2 Special Nuts)	1	1	ST
19.	B01-750CR	Rear Leg Complete with Wheel, Pacific-Blue, L&R	1	1	PR
20.	B01-147	8"x1.4" Hugo Rear Wheel (Solid Tire, 3 Spokes Hub, Bushing & 2 Bearings)	2	1	EA
21.	A01-453	Hub Cap for Wheel	2	1	EA
22.	B01-970	Folding Strap with Clips and Pins	1	1	EA
23.	B01-971	Pin, cotterless detent, m6x 27.5mm grip length, w/tether - 2ea / set	1	1	ST
24.	B01-921	Fork Folding Upper Bracket with Hardware, L&R	1	1	PR