

ASSEMBLY & INSTALLATION INSTRUCTIONS

Venasca-72



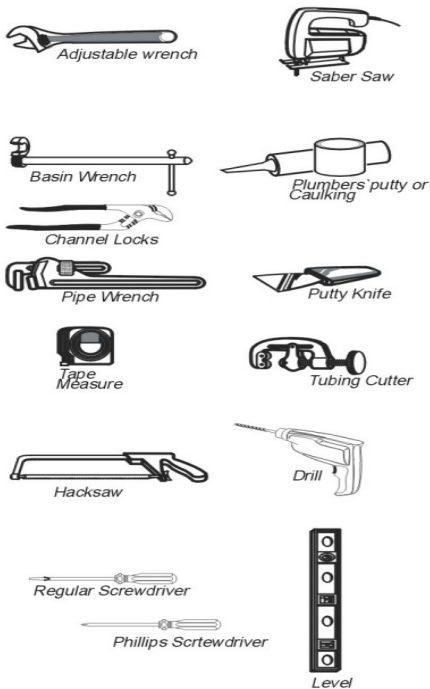
INTRODUCTION

Thank you for selecting our Madeli product. To help ensure your installation proceeds smoothly, read these instructions carefully before you begin. Carefully unpack and examine your new plumbing fixture and review the recommended tools and material section.

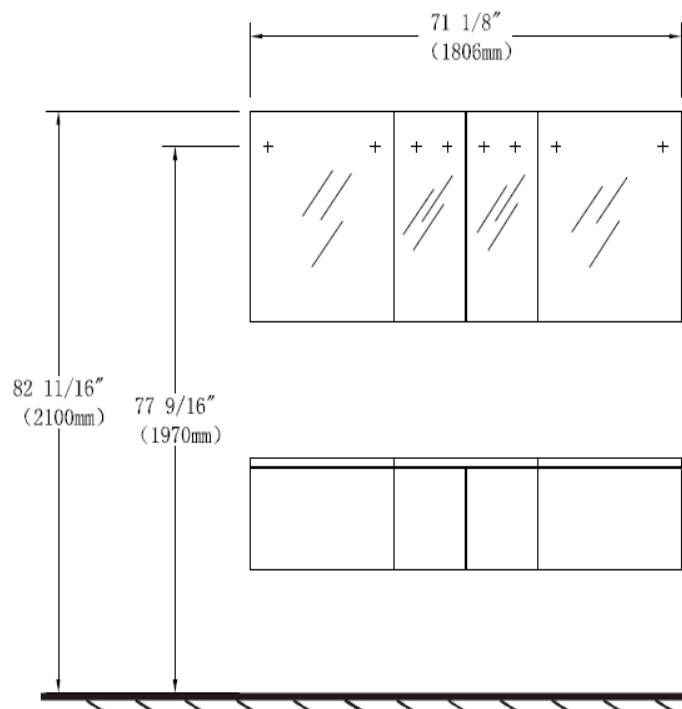
ALL INSTALLATION PROCEDURES MUST COMPLY IN STRICT ACCORDANCE WITH APPLICABLE LOCAL PLUMBING AND BUILDING CODES

Recommended tools and materials:

Some of the procedures may require the use of the following tools.



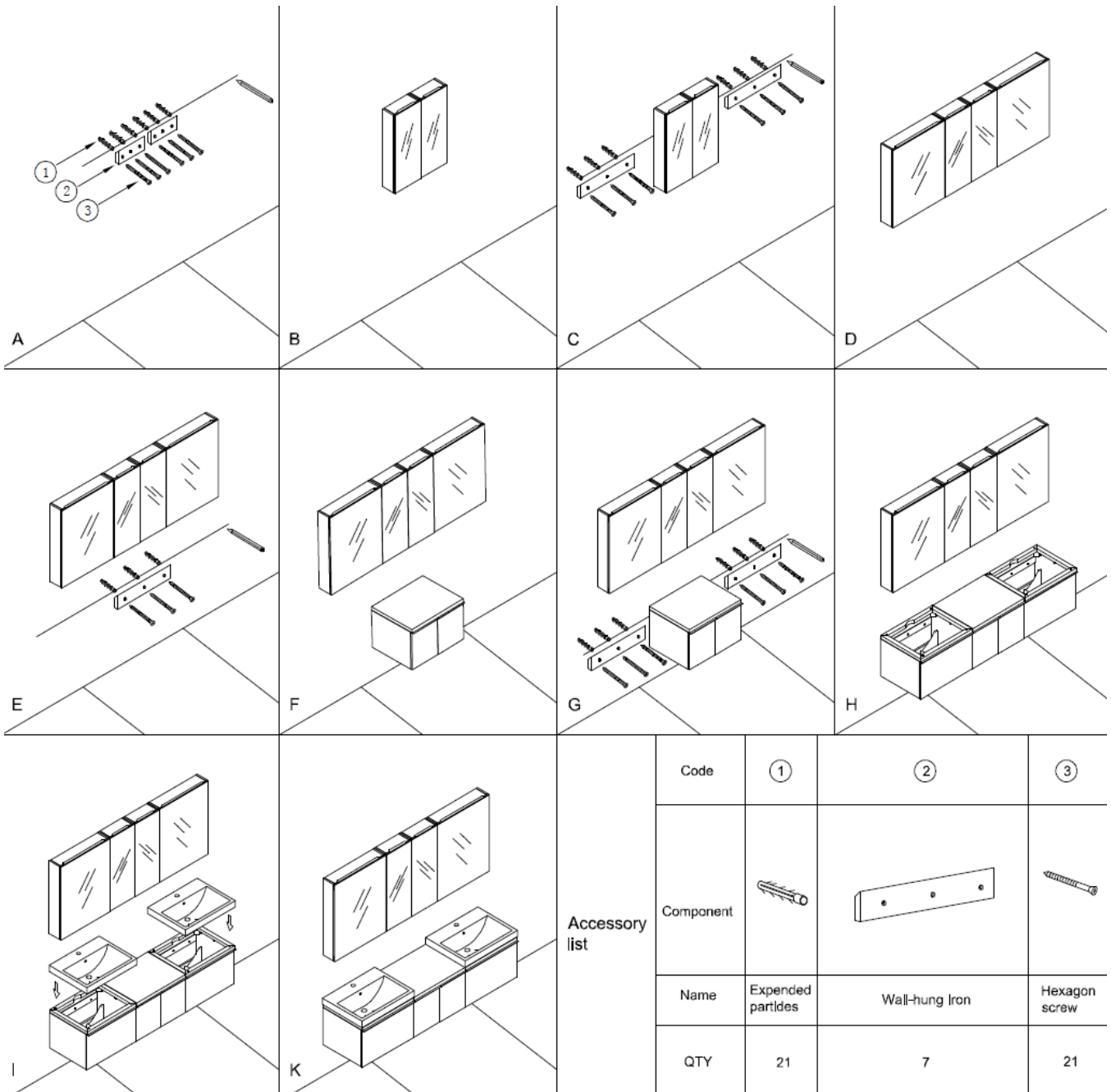
Roughing-in Dimensions






Step One: Use the track level bar, tape measure and pencil to mark holes in desired location. Having established the position, use drill to make holes. Use the hammer to insert anchors into the hole and screw in the screws. Finally put the mirror in place.

Step Two: Place the vanity in position. Level vanity ensuring it is level with water outlets and piping. If the doors are out of alignment they can be fixed by adjusting the hinges.

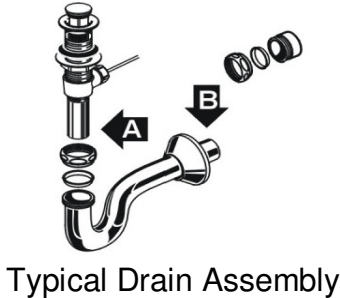
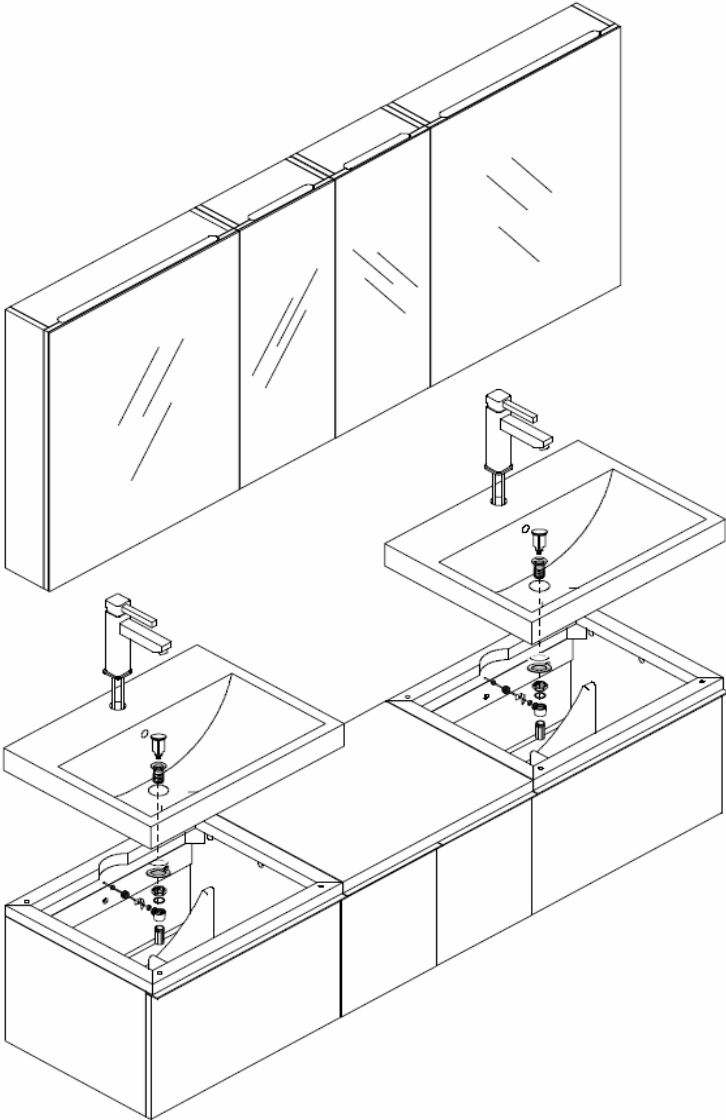
Step Three: Fix the vanity to the wall through the back rail of the cabinet (for wall hung units). The fixings should be placed on a wall stud. We recommend that you use a toggle or toggle type system if you can't located a strong solid surface.



Code	①	②	③
Component			
Name	Expendable partides	Wall-hung Iron	Hexagon screw
QTY	21	7	21

Accessory list

Install faucet and drain in accordance with manufacturer's instructions. Ensure all water supply and drain connections are tightened. Turn on water supply valves and water-test installation.



Connect the trap to the drain assembly hand tight to check alignment. It may be necessary to cut off part of the tailpiece (are "A") or part horizontal leg of the trap (area "B") trap joints for watertight assembly. Connect hot and cold supply lines to the shut off valves. Tighten