

Ensign Table Instructions

With the carton in the upright position, remove the table base, feet and hardware.

Attach the 2 feet using the bolts provided. Be sure that the longer ends of the feet extend toward the front, as shown.

Table base is under strong spring compression. Pay special attention to follow the instructions carefully to avoid injury. Read instructions all the way through before proceeding.

While standing behind the table as shown, cut the restraining band.

With hands positioned as shown and head held back from table, slowly release the brake lever with one hand while controlling the upward motion of the bars with the other hand.

Before attaching board to table base, use brake lever to lock board supports into position shown in diagram. Lift board and place on board supports with front edge resting against board stops "C." After centering board left-to-right, attach using screws provided. For best results it is recommended that holes be started with an awl or drill. Use care not to drill all the way through board.

Connect tilt control spring as shown.

TABLE ADJUSTMENTS

The Ensign table is designed to accommodate a variety of board sizes and drafting machines. Consequently, it is likely that you will have to make spring and tension adjustments before using your table.

Lift-Strength Adjustment

The tabletop should rise to its uppermost position when the brake lever is released. If you have a heavy tabletop or are using a drafting machine, you may find that it will not do so without assistance. In this case, tighten nut "B." Conversely, if you are using a smaller tabletop and it rises too quickly when the brake lever is released, you should loosen nut "B."

Tilt-Control Adjustment

Similar to the lift strength adjustment described above, the tilt strength can be adjusted by tightening or loosening the bolt connecting to the tilt-control spring.

Brake Control Adjustment

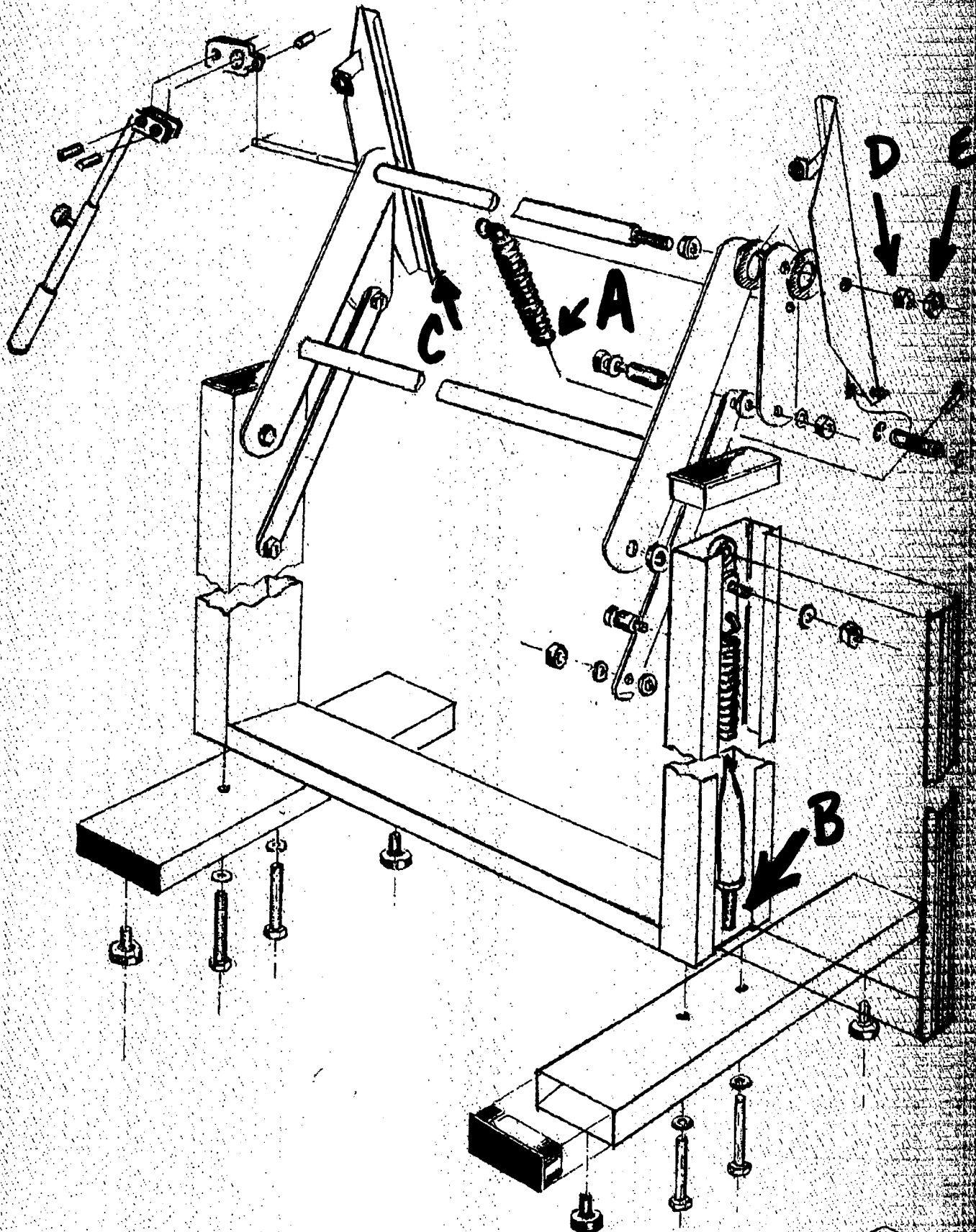
The brake lever should hold the tabletop firmly at any height or tilt position. If it fails to do so, follow this procedure to increase the braking strength:

1. Release the brake lever
2. Loosen nut E (no need to remove all the way)
3. Tighten nut D one revolution
4. Return brake lever to the locked position and test to see if tabletop holds firmly in desired position. If not, release brake and tighten nut D additional revolution(s)
5. Once satisfied with brake-locking strength, retighten nut E up against nut D

After extended table usage, the brake-lock strength will gradually diminish and it will be necessary to repeat this procedure. Please save these instructions for future reference.

Jan 2006
Alvin & Co, Inc
www.alvinco.com

ALVIN Ensign Table



"Save for future reference"

