



Low Voltage Exterior Lighting



Planning Guide

Plan Your Layout

Plan layout and identify the elements / areas you want to bring light to, then select the proper fixtures depending on function and style.



Select Your Power Pack

Add up the total wattage from each light and select the appropriate power pack. Select a power pack that will allow you to expand on your system.



Place Fixtures According To Layout

Purchase cable according to the length required to reach all areas needing to be lit. Cables can be connected together for additional length.



Lay Cable and Attach Fixtures

Simply plug the power pack into an outdoor electrical outlet. Attach the cable to the transformer and run it through out the yard connecting each light at its desired location.



Turn System On and Enjoy

Turn system on to test fixtures and make adjustments as required before hiding cable. You are now ready to relax and enjoy your enhanced outdoor living area.



Downlighting

- Enhance safety
- Place along walkways and steps
- Outline driveways
- Mark garden paths and flower beds
- Accent patios and decks



Uplighting

- Create a focal point
- Highlight small trees and shrubs
- Illuminate fountains and garden statues



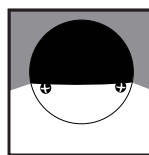
Walklights

These fixtures use tiers and shades to direct the light downward and minimize glare making them ideal for lighting walks and steps.



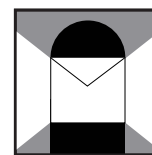
Floodlights

These fixtures direct light upwards at a controllable angle to illuminate statues, landscaping, fences and architectural surfaces.



Surface/Deck Lights

These fixtures mount directly onto walls, fences and decks. Provides lighting around steps, benches, railings and more.

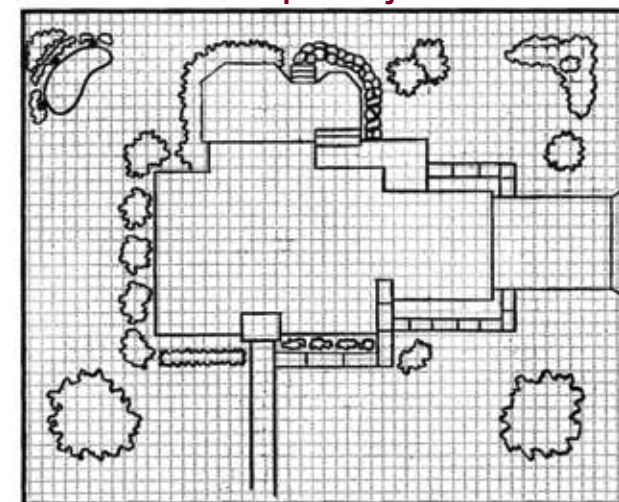


Low Profile Lights

These fixtures contain the light closest to the ground, making these styles perfect for landscape borders and driveways.

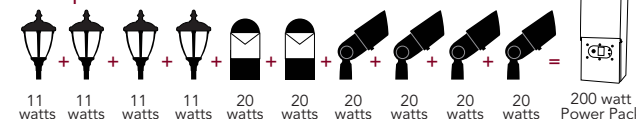
- Using graph paper, design layout of your landscape and identify the elements and areas you want to bring light to (see below for example).

Example of layout



- Select the proper fixtures, depending upon function and style.
- Total the wattage of the selected fixtures.

Example:



- Select a power pack that is higher in wattage than the total wattage of your fixtures.
- Select the length and gauge of cable required for your plan.

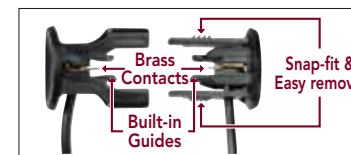
Combined wattage of all fixtures on line (in Watts)	Power Pack				Wire Gage (0-75')	Wire Gage (75'-150')	Wire Gage (150'-250')
	100	200	300	600			
0-80	X	X	X		16	16	14
80-120		X	X		16	14	12
120-180			X	X	14	12	12
180-240				X	12	12	Not recommended
240-300				X	12	Not recommended	Not recommended
300-600				X	2 X 12	Not recommended	Not recommended

Ergonomic Quick-Clip Connector



Large pressure point

Perfect wire alignment



- Paradise® re-introduces the traditional low voltage clip connector with an ergonomic snap-fit design that allows for easy no tool installation. A lot of research and design was put into the development of a connector that made it comfortable for all users to quickly install and remove connector ends. It can be used with numerous gauge wires including: 18, 16, 14 and 12.
- Ergonomic snap fit design**
Large pressure points provide effortless installation and removal of connector ends
- For use with 18, 16, 14 and 12 gauge wires**
Connects fixture wire to all common landscape wire gauges
- Built-in guides for perfect wire alignment**
Ensures consistent maintenance-free performance
- Strong impact resistant ABS construction with brass contacts**
Solid construction ensures long life performance of system

LED Low Voltage lighting has all the great benefits of traditional Low Voltage lighting and more.

- Save up to 85% in energy costs
- Ultra long life – LEDs last up to 20 years
- Reduce maintenance cost and create less waste
- Warm white light similar to incandescent and halogen lights

