



**BSS610**

BSS610Z  
Tool Only

**18V LXT®  
6-1/2" CIRCULAR SAW**  
Cuts 2X Material at 45°

- Makita-built motor delivers 3,700 RPM for faster cutting
- Built-in L.E.D. light illuminates the work area
- 50° maximum bevel cutting capacity
- Built-in dust blower keeps the line of cut free of debris
- Heavy gauge machined base for smooth and accurate cutting
- 18V LXT® Battery charges in only 30 minutes

Model BSS610 Includes: 2 ea. Battery BL1830, Rapid Optimum Charger, 24T Blade, Tool case

Model BSS610Z: Tool only - Battery and charger not included

Blade diameter	6-1/2"
Arbor	5/8"
Max. cutting depth:	90° (2-1/4"), 45° (1-9/16")
No load speed	3,700 RPM
Battery	18V LXT® Lithium-Ion
Overall length	13-5/8"
Net weight	7.6 lbs. (w/battery)
Shipping weight	19.0 lbs.



**BSS611Z**

Tool Only - Battery &  
Charger not included

**18V LXT®  
6-1/2" CIRCULAR SAW (Tool Only)**  
2-1/4" Maximum Cutting Capacity

- Makita-built motor delivers 3,700 RPM for faster cutting
- Heavy gauge machined base for smooth and accurate cutting
- 50° maximum bevel cutting capacity
- Compact, ergonomic design at only 7.3 lbs. for reduced operator fatigue

Model BSS611Z: Tool Only - With 1 ea. blade; battery, charger and case not included

Blade Diameter	6-1/2"
Arbor	5/8"
Max. cutting depth:	90° (2-1/4"), 45° (1-9/16")
No load speed	3,700 RPM
Battery	18V LXT® Lithium-Ion
Overall length	13-5/8"
Net weight	7.3 lbs. (w/battery)
Shipping weight	8.2 lbs.



**BSS501**

BSS501Z  
Tool Only

**18V LXT®  
5-3/8" CIRCULAR TRIM SAW**  
Weighs Only 6.0 lbs.

- Makita-built motor delivers 3,600 RPM for faster cutting
- Compact, ergonomic design at only 6.0 lbs.
- Built-in dust blower keeps the line of cut free of debris
- Heavy gauge machined base for smooth and accurate cutting
- Electric brake for maximum productivity
- 18V LXT® Battery charges in only 30 minutes

Model BSS501 Includes: 2 ea. Battery BL1830, Rapid Optimum Charger, 16T Blade, Tool bag

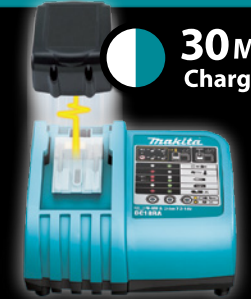
Model BSS501Z: Tool only - Battery and charger not included

Blade diameter	5-3/8"
Arbor	5/8"
Max. cutting depth:	90° (2"), 45° (1-3/8")
No load speed	3,600 RPM
Battery	18V LXT® Lithium-Ion
Overall length	14-3/8"
Net weight	6.0 lbs. (w/battery)
Shipping weight	16.7 lbs.

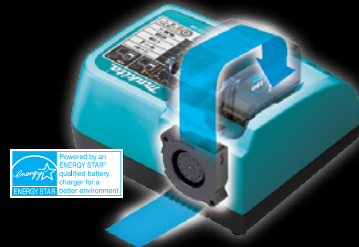
**LXT®  
LITHIUM-ION**

**RAPID OPTIMUM  
CHARGING SYSTEM**

**30 Minute  
Charge Time**



**Optimizes Charge Time and Battery Life through Battery Memory Chip and Charger Interaction**



**Forced Air Cooling System Actively Controls Core Battery Temperature**

**ALSO AVAILABLE**

**18V LXT® 5" Chain Saw**  
**LXCU01Z**



See pg. 73  
for full description

**18V LXT® Hedge Trimmer**  
**LXHU02Z**



See pg. 73  
for full description

**18V LXT® String Trimmer**  
**LXRU02Z**



See pg. 73  
for full description

**18V LXT® Grass Shear**  
**LXMU02Z**



See pg. 73  
for full description



**BJR181**

BJR181Z  
Tool Only

**18V LXT®  
RECIPRO SAW**  
"Tool-less" Blade Change and  
Shoe Adjustment

- Makita-built motor delivers 0 - 2,900 strokes per minute
- Large 2-finger variable speed trigger for added convenience
- Retractable tool hook secures the tool when not in use
- Soft grip handle provides increased comfort on the job
- Compact design at only 19-5/8" long and weighs only 8.2 lbs.
- Ergonomic shape for even pressure and easy control
- 18V LXT® Battery charges in only 30 minutes

Model BJR181 Includes: 2 ea. Battery BL1830, Rapid Optimum Charger, 1 ea. Blade (723054-A, 723066-A), Tool case

Model BJR181Z: Tool only - Battery and charger not included

Length of stroke	1-1/8"
Max. cutting depth:	Pipe (5-1/8"), Wood w/12" blade (10")
Strokes per minute	0 - 2,900 SPM
Battery	18V LXT® Lithium-Ion
Overall length	19-5/8"
Net weight	8.2 lbs. (w/battery)
Shipping weight	17.7 lbs.



**BJR182Z**

Tool Only - Battery &  
Charger not included

**18V LXT®  
RECIPRO SAW (Tool Only)**  
2,900 SPM and 1-1/8" Stroke  
for Fast Cutting

- Makita-built motor delivers 0 - 2,900 strokes per minute
- "Tool-less" blade change system and shoe adjustment
- Compact design at only 7.9 lbs. for reduced operator fatigue
- Soft grip handle provides increased comfort on the job
- Ergonomic shape for even pressure and easy control

Model BJR182Z: Tool Only - With 1 ea. blade; battery, charger and case not included

Length of stroke	1-1/8"
Max. cutting depth:	Pipe (5-1/8"), Wood w/12" blade (10")
Strokes per minute	0 - 2,900 SPM
Battery	18V LXT® Lithium-Ion
Overall length	17-3/4"
Net weight	7.9 lbs. (w/battery)
Shipping weight	8.0 lbs.



**BJV180**

BJV180Z  
Tool Only

**18V LXT®  
JIG SAW**  
Custom Cutting Without a Cord

- Makita-built motor delivers 0 - 2,600 strokes per minute
- 3 orbital settings plus straight cutting for use in a variety of materials
- "Tool-less" blade change system for fast blade installation and removal
- Large 2-finger variable speed trigger for added convenience
- Heavy gauge precision machined base
- 18V LXT® Battery charges in only 30 minutes

Model BJV180 Includes: 2 ea. Battery BL1830, Rapid Optimum Charger, Jig saw blade set, Anti-splintering device (415524-7), Cover plate (417852-6), Hex wrench (783202-0), Tool bag

Model BJV180Z: Tool only - Battery and charger not included

Length of stroke	1"
Max. cutting depth at 90°:	Wood (5-5/16") Steel (3/8")
Strokes per minute	0 - 2,600 SPM
Blade shank	"T" Tang
Battery	18V LXT® Lithium-Ion
Overall length	10-1/8"
Net weight	6.1 lbs. (w/battery)
Shipping weight	14.1 lbs.