

Thank you for your purchase of this quality Zojirushi product. We are confident that it will give you top performance and optimum satisfaction for many years. To ensure this, please read and follow the important guidelines below.

**Important Safeguards:**

- This bottle is for holding beverages and keeping them hot or cold. Please do not use for other than intended purposes.

- Please follow these instructions to prevent scalding, deterioration and discoloration of beverages, as well as malfunction and staining of the product.

Keep out of reach of infants and small children.



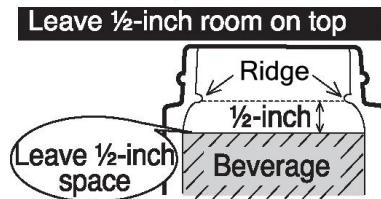
Always use the cup when drinking hot beverages. Never drink directly out of the bottle.



Do not open the spout with the bottle close to your face or tilted toward you. Pressure built up in the bottle may cause hot beverages to spew out.

Do not use the bottle if it loses its heat retention properties. The outside of the bottle may become very hot if hot beverages are poured inside.

Leave ½-inch room on top when filling the bottle. Contents may overflow when placing the stopper, or the spout may become difficult to open. Beverages may also become caught in the stopper and leak out.



Keep away from heat sources such as gas stoves, ovens and heaters.

Do not heat in a microwave.

Always close the stopper tightly to prevent beverages from spilling and make sure to close the spout after pouring.

Consume beverages within the same day to prevent from spoiling.

Always make sure the stopper gasket is on.

Do not disassemble.

Always clean thoroughly after use.

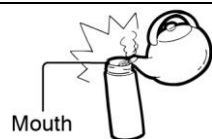
Do not wash under water (SJ-S, SJ-T models only).

Please avoid filling the bottle with the following:

- Dry ice and carbonated drinks: contents may spill out or the pressure may cause the spout to become difficult to open or the stopper or cup to burst, causing injuries.
- Liquids containing salt such as soup: although the liner is made of 18/8 stainless steel and is nonstick coated, salt may cause rust resulting in loss of thermal insulation.
- Dairy products and fruit juice: if left inside for a long period of time, contents may spoil and produce gas that may cause the stopper to burst, causing injuries.
- Fruit pulp and tea leaves: may become caught in the stopper and cause contents to spill.

**Warnings and Cautions:**

Do not allow hot kettles to touch the mouth of the bottle. Doing so may damage the bottle.



Do not force large ice cubes in.

Do not rub the design on the outside of the bottle strongly.

Do not leave a tea bag inside and close the stopper.

Avoid dropping or hitting against hard surfaces. Damage to the plastic or stainless steel surface of the bottle may reduce its ability to retain heat.

(For bottles with carrying straps)

Do not swing the bottle while holding the carrying strap.

Do not pull on the carrying strap forcefully.

Always clean the stopper and stopper gasket thoroughly after use.

(For bottles with carrying straps)

Do not wrap the carrying strap around your neck.

After pouring, stand the bottle upright and close the spout. Closing the spout while the bottle is tilted may cause beverages to become caught in the stopper and leak out later. Please follow these precautions:

- After pouring, stand the bottle upright and wait 2-3 seconds before closing the spout.
- Wipe off any excess liquids on the cup before closing.
- Store the bottle upright when carrying inside bags to prevent beverages from spilling.

Hot tea may discolor if stored for a long period of time. We recommend the use of tea bags and brewing right before consumption.

•The illustrations used in this instruction manual may vary from the actual product you have purchased.

## How to Take Care of Your Bottle:

Outside Main Body	Models that CANNOT be washed under water (SJ-S, SJ-T models): Soak a soft cloth in warm water and dishwashing soap, wring well and wipe.  Models that CAN be washed under water (all other models): Wash with warm water and dishwashing soap using a soft sponge, rinse and dry. <ul style="list-style-type: none"> <li>• Use a small brush sold in stores if necessary.</li> <li>• Remove carrying straps before washing.</li> </ul>
Cup, Stopper	Wash with warm water and dishwashing soap using a soft sponge, rinse and dry. Detach and wash gaskets after each use, and remember to attach them.
Inside Main Body	Wash with warm water and dishwashing soap using a soft sponge with handle, rinse and dry. Keeping the inside clean will help prevent odors.
Carrying Strap	Soak a soft cloth in warm water and dishwashing soap, wring well and wipe.
<ul style="list-style-type: none"> <li>• Do not soak.</li> <li>• Do not clean with thinner, benzene, abrasive cleaners or other harsh cleaners.</li> <li>• Do not bleach.</li> <li>• Do not use a dishwasher or dish-dryer. Do not boil to sanitize.</li> </ul>	

### To Remove Rust Spots and Water Stains:

You may find rust spots or water stains caused by impurities in the water. To remove these stains, fill the bottle with hot water with 10% vinegar and let stand for 30 minutes. Rinse and wash with a soft sponge.

### To Remove Coffee and Tea Stains:

To remove stains from coffee, tea or hard water buildup, use coffee cleaners sold in stores and follow instructions on package. Remove the stopper when doing so.

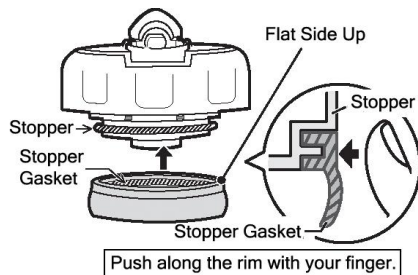
### Replacement Parts:

The stopper and gaskets may need to be replaced due to time and wear. Please check it about once a year. For optimum performance please replace them if damaged. When replacing parts, please record the model number and part name beforehand. Then contact either the store where you purchased the product or Zojirushi Customer Service.

**Some of the information below may not apply to your vacuum bottle. Please review them if applicable.**

### How to Attach the Stopper Gasket:

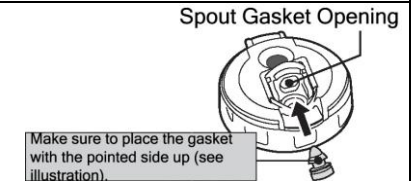
Fit the stopper gasket to the stopper as illustrated. Make sure there is no open space in between.



•Make sure not to place the stopper gasket upside down.

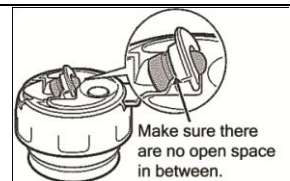
### If the Spout Gasket Comes Off:

If the spout gasket comes off, push it in from the inside of the spout gasket opening as illustrated.



### When Complete:

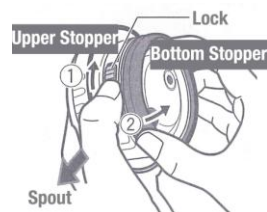
Make sure that the stopper gasket and spout gasket are attached correctly to prevent spills.



### How to Remove / Attach the Bottom Stopper:

#### To Remove the Bottom Stopper:

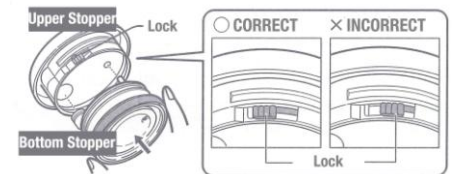
Slide the lock to the right as illustrated by (1), and then remove the bottom stopper from the spout side as illustrated by (2).



#### To Attach the Bottom Stopper:

Match the knots and openings as illustrated and attach the bottom stopper.

•After attaching the bottom stopper, make sure that the lock has returned to the left.



For questions or comments, please contact:

Zojirushi America Corporation

Tel: (800) 733-6270 [www.zojirushi.com](http://www.zojirushi.com)