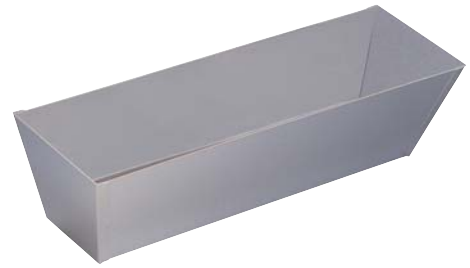


Taping Tools

- Heavy gauge stainless steel, spot-welded construction
- Tapered ends and sides

Prod. No.	Desc.	Size	Top	Bottom
23-001	MP-10	10" (254mm)	11½" (292mm)	10½" (267mm)
23-002	MP-12	12" (305mm)	13½" (343mm)	12½" (318mm)
23-003	MP-14	14" (358mm)	15½" (394mm)	14½" (368mm)
23-004	MP-18	18" (457mm)	19½" (495mm)	18½" (470mm)



STAINLESS STEEL MUD PAN

- Heavy-gauge stainless steel with HELI-ARC welded corners
- Professional quality water-tight construction
- Tapered ends and sides

Prod. No.	Desc.	Size	Top	Bottom
24-001	SP-10	10" (254mm)	11½" (292mm)	10½" (267mm)
24-002	SP-12	12" (305mm)	13½" (343mm)	12½" (318mm)
24-003	SP-14	14" (358mm)	15½" (394mm)	14½" (368mm)
24-004	SP-18	18" (457mm)	19½" (495mm)	18½" (470mm)



HELI-ARC STAINLESS STEEL MUD PAN

- Heavy-gauge galvanized steel, spot-welded construction
- Tapered ends and sides

Prod. No.	Desc.	Size	Top	Bottom
25-001	GP-10	10" (254mm)	11½" (292mm)	10½" (267mm)
25-002	GP-12	12" (305mm)	13½" (343mm)	12½" (318mm)
25-003	GP-14	14" (358mm)	15½" (394mm)	14½" (368mm)
25-004	GP-18	18" (457mm)	19½" (495mm)	18½" (470mm)



GALVANIZED MUD PAN

- Red Polyethylene plastic pan
- Textured sides for sure gripping
- Withstands temperature variations
- Double Bladed

Prod. No.	Blades	Size	Top	Bottom
27-002	2	12" (305mm)	13¼" (337mm)	12¼" (311mm)
27-004	2	14" (356mm)	15¼" (387mm)	14¼" (362mm)

- Gray Polyethylene plastic pan
- Textured sides for sure gripping
- Withstands temperature variations
- Single Blade

Prod. No.	Blades	Size	Top	Bottom
88-029	1	12" (305mm)	13¼" (337mm)	12¼" (311mm)



PLASTIC MUD PANS