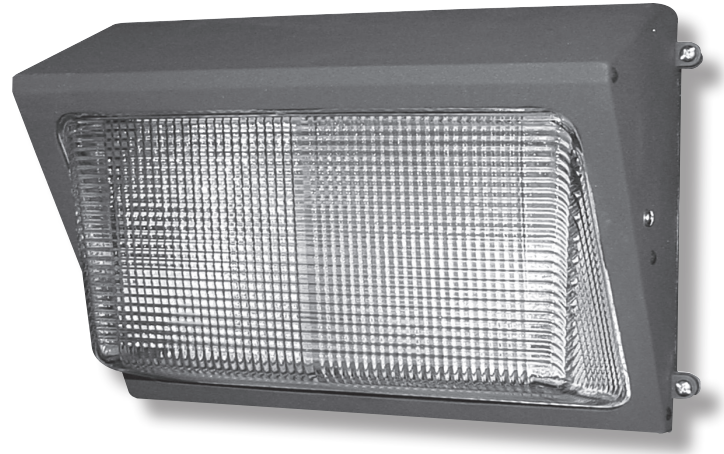


REFERENCE:



APPLICATIONS

- Warehouse Perimeter Lighting
- Security Lighting
- Retail Lighting
- Commerical and Industrial Applications



SPECIFICATIONS

- Die-cast aluminum housing
- Powder-coat finish
- Porcelain Medium base socket
- Heat and shock resistant borosilicate glass lens
- Silicone gasketing
- Wet location listed
- Lamp Included

DIMENSIONS

H	W	D
9"	14.25"	7.1"

ORDERING INFO.

AVAILABLE IN *energy saving* **FLUORESCENT!** * pulseSTART

CATALOG NO.	UPC CODE	DESCRIPTION	VOLTS	BALLAST	LAMP	BASE	SHIPPING WEIGHT (LBS)
WPM84FL	05838	Medium Wallpak 84 Watt Fluorescent	120V	ELECTRONIC	2x42 6500K		8
WPM100MHQ	05852	Medium Wallpack 100 Watt Metal Halide	120/208/240/277	QUAD HX-HPF	ED17	medium	14
* WPM150MHQP	06400	Medium Wallpak 150 Watt Metal Halide Pulse	120/208/240/277	QUAD PULSE	ED17	medium	15
WPM150SQ	05854	Medium Wallpak 150 Watt Sodium	120/208/240/277	QUAD HX-HPF	ED23-½	medium	15
WPM150S	05855	Medium Wallpack 150 Watt Sodium	120V	R-NPF	ED23-½	medium	12

The compliance of our products to individual project specifications and approval for their use, is not warranted by NSi Lighting Products. Specification sheets and photometric data are provided as a guideline for applications information. Final consideration of any given application must take into consideration knowledge of the specific installation environment.

Questions call NSi Lighting Products at 1-800-321-5847