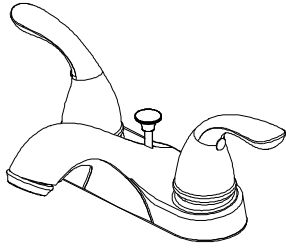


Premier®

Brand Lavatory Faucets



Model Number: 120461LF & 120463LF & 120464LF



INSTALLATION

Tools:

Adjustable wrench



Pipe tape



Pipe wrench



Groove joint pliers



Basin wrench



screwdriver



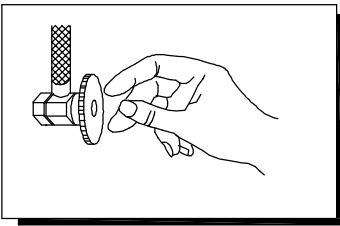
Plumber's putty



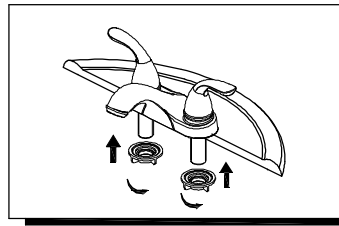
Cleaning:

To maintain and protect the fine luster of all products. Clean with a soft damp cloth only. DO NOT USE detergents or cleanser as they may harm the protective finish.

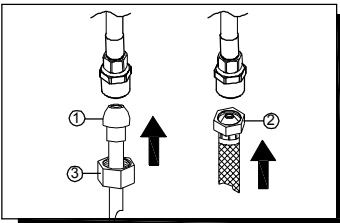
INSTALLATION STEPS: Two handle lavatory faucet



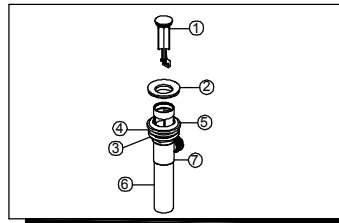
1. Shut off water supply at angle stop. Remove old faucet. Clean sink surface in preparation for new faucet.



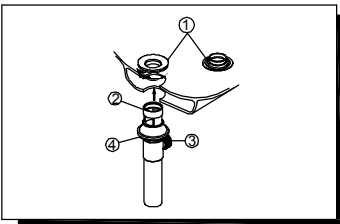
2. Place new faucet through holes in top of sink. From underside, threaded mounting nut.



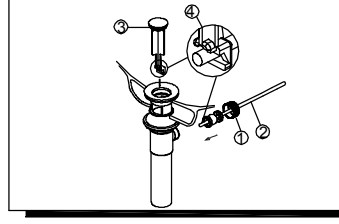
3. Make Connections to water lines: Choose hook-ups for 1/2" I.P.S. connections: (1) Ball nose riser (3/8" O.D. copper tubing), or (2) 1/2" I.P.S. faucet connector. Use the enclosed coupling nuts (3) with the ball nose risers (1). Use two wrenches when tightening. Do not overtighten.



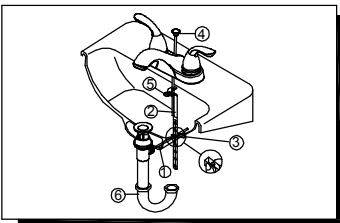
4. Remove stopper (1) and flange (2). Screw nut (3) all the way down. Push washer (4) and gasket (5) down. Remove tailpiece (6) from body (7), add Teflon® tape, replace tailpiece.



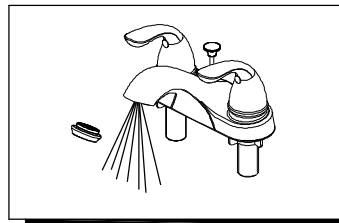
5. Apply a small bead of Plumber's putty to underside of flange (1). Insert body (2) into sink. Screw flange (1) into body (2). Pivot (3) must face faucet. Pull assembly down firmly and hold in place. DO NOT TWIST. Tighten nut, washer & gasket (4), clean off excess Plumber's putty.



6. Remove pivot nut (1). Install horizontal rod (2) and stopper (3) as removable (4). Hand tighten pivot nut (1).

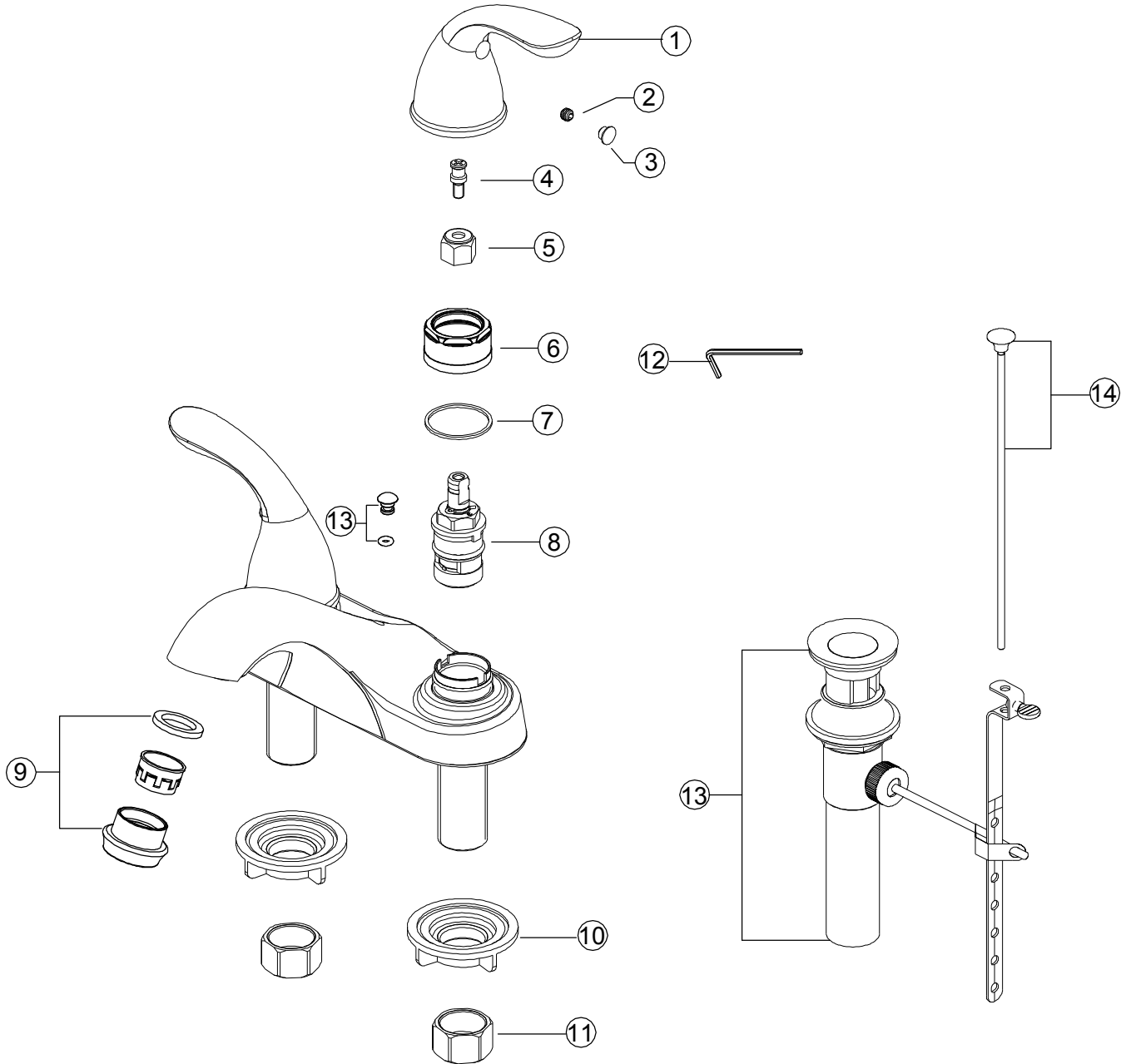


7. Attach horizontal rod (1) to strap (2) using clip (3). Insert lift rod (4) into strap and tighten screw (5). Connect assembly to drain (6).



8. Important: After installation is completed, remove aerator. Turn on water supply and allow both hot and cold water to run for at least one minute each. While water is running, check for leaks. Replace aerator.

Parts List



| MODEL NO. 120461LF | | | |
|--------------------|-------------------|-----------|------|
| NO. | PART DESCRIPTION | PART NO. | QTY. |
| 1 | Handle Assembly | 146 | 1 |
| 2 | Handle Screw | 20 | 1 |
| 3 | Index Plug | 147 & 148 | 1 |
| 4 | Screw | 149 | 1 |
| 5 | Inverter | 88 | 1 |
| 6 | Bonnet Nut | 173 | 1 |
| 7 | Washer | 174 | 1 |
| 8 | Ceramic Cartridge | 3 & 4 | 1 |
| 9 | Aerator | 175 | 1 |
| 10 | Mounting Nut | 46 | 2 |
| 11 | Coupling Nut | 4CP308 | 2 |
| 12 | Handle Wrench | 994666 | 1 |
| 13 | Cap | 158 | 1 |

| MODEL NO. 120463LF | | | |
|--------------------|--------------------|-----------|------|
| NO. | PART DESCRIPTION | PART NO. | QTY. |
| 1 | Handle Assembly | 146 | 1 |
| 2 | Handle Screw | 20 | 1 |
| 3 | Index Plug | 147 & 148 | 1 |
| 4 | Screw | 149 | 1 |
| 5 | Inverter | 88 | 1 |
| 6 | Bonnet Nut | 173 | 1 |
| 7 | Washer | 174 | 1 |
| 8 | Ceramic Cartridge | 3 & 4 | 1 |
| 9 | Aerator | 175 | 1 |
| 10 | Mounting Nut | 46 | 2 |
| 11 | Coupling Nut | 4CP308 | 2 |
| 12 | Handle Wrench | 994666 | 1 |
| 13 | Brass Pop-Up | 124020 | 1 |
| 14 | Lift Rod&Lift Knob | 994599 | 1 |

| MODEL NO. 120464LF | | | |
|--------------------|--------------------|-----------|------|
| NO. | PART DESCRIPTION | PART NO. | QTY. |
| 1 | Handle Assembly | 151 | 1 |
| 2 | Handle Screw | 20 | 1 |
| 3 | Index Plug | 147 & 148 | 1 |
| 4 | Screw | 149 | 1 |
| 5 | Inverter | 88 | 1 |
| 6 | Bonnet Nut | 173 | 1 |
| 7 | Washer | 174 | 1 |
| 8 | Ceramic Cartridge | 3 & 4 | 1 |
| 9 | Aerator | 176 | 1 |
| 10 | Mounting Nut | 46 | 2 |
| 11 | Coupling Nut | 4CP308 | 2 |
| 12 | Handle Wrench | 994666 | 1 |
| 13 | Brass Pop-Up | 124011 | 1 |
| 14 | Lift Rod&Lift Knob | 994602 | 1 |