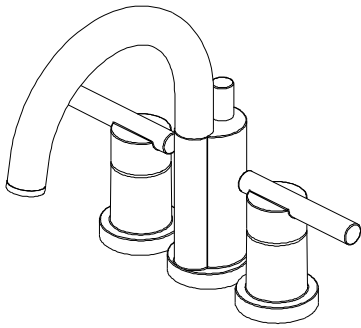


Premier®

Brand Lavatory Faucets



Model Number: 120331LF & 120332LF

INSTALLATION

Tools:

Adjustable wrench



Pipe tape



Pipe wrench



Groove joint pliers



Basin wrench



screwdriver



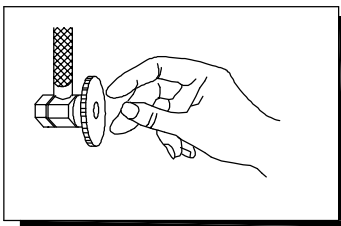
Plumber's putty



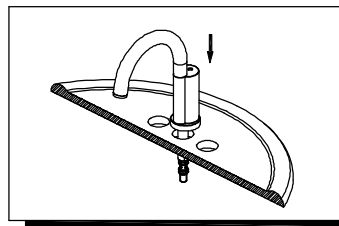
Cleaning:

To maintain and protect the fine luster of all products .Clean with a soft damp cloth only .DO NOT USE detergents or cleanser as they may harm the protective finish.

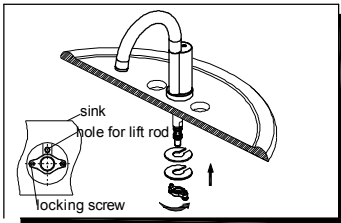
INSTALLATION STEPS: Two handles lavatory faucet



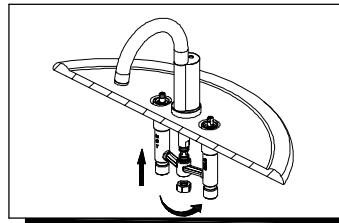
1. Shut off water supply at angle stop. Remove old faucet. Clean sink surface in preparation for new faucet.



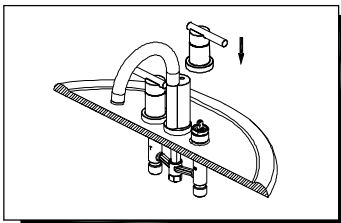
2. Place spout assembly through mounting hole in sink.



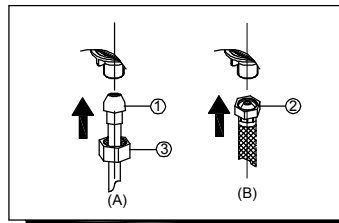
3. From undersink, assembly rubber washer, metal washer and mounting nut onto the spout shank under sink. Hand tighten nut and check that gap of in washers aligns with the lift rod hole. Firmly tighten the locking screw to the metal washer. Before final tightening, be sure the spout is facing forward.



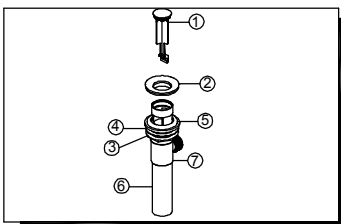
4. From underneath, insert the underbody through the mounting holes with the shank labeled "Cold" on right side and shank labeled "Hot" on left side. Align socket onto spout shank, push underbody up until the top of socket reaches the spout shank stop. Be careful not to damage the O-ring seals. Attach locking nut by hand.



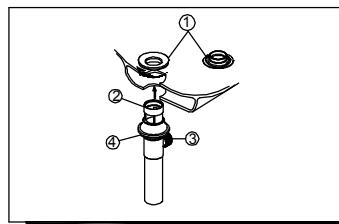
5. Connect handles onto valve stem. Thread the handle seat onto the bonnet nut .



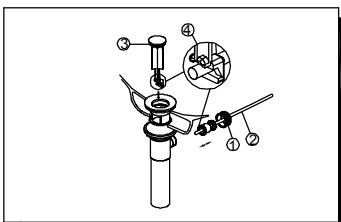
6. Make Connections to water lines: Choose hook-ups for 1/2" I.P.S. connections:
(1) Ball nose riser (3/8" O.D. copper tubing), or (2) 1/2" I.P.S. faucet connector Use coupling nuts (3) with the ball nose risers (1). Use wrenches when tightening. Do not overtighten.



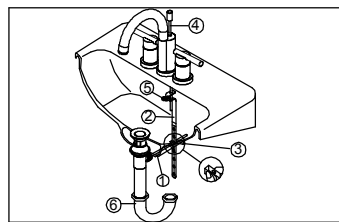
7. Remove stopper (1) and flange (2). Screw nut (3) all the way down. Push washer (4) and gasket (5) down. Remove tailpiece (6) from body (7), add Teflon® tape, replace tailpiece.



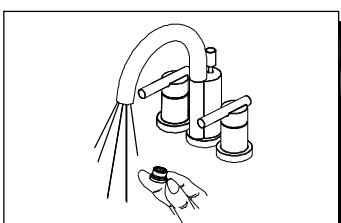
8. Apply a small bead of Plumber's putty to underside of flange (1). Insert body (2) into sink. Screw flange (1) into body (2). Pivot (3) must face faucet. Pull assembly down firmly and hold in place. DO NOT TWIST. Tighten nut, washer & gasket (4), clean off excess Plumber's putty .



9. Remove pivot nut (1). Install horizontal rod (2) and stopper (3) as removable (4). Hand tighten pivot nut (1).

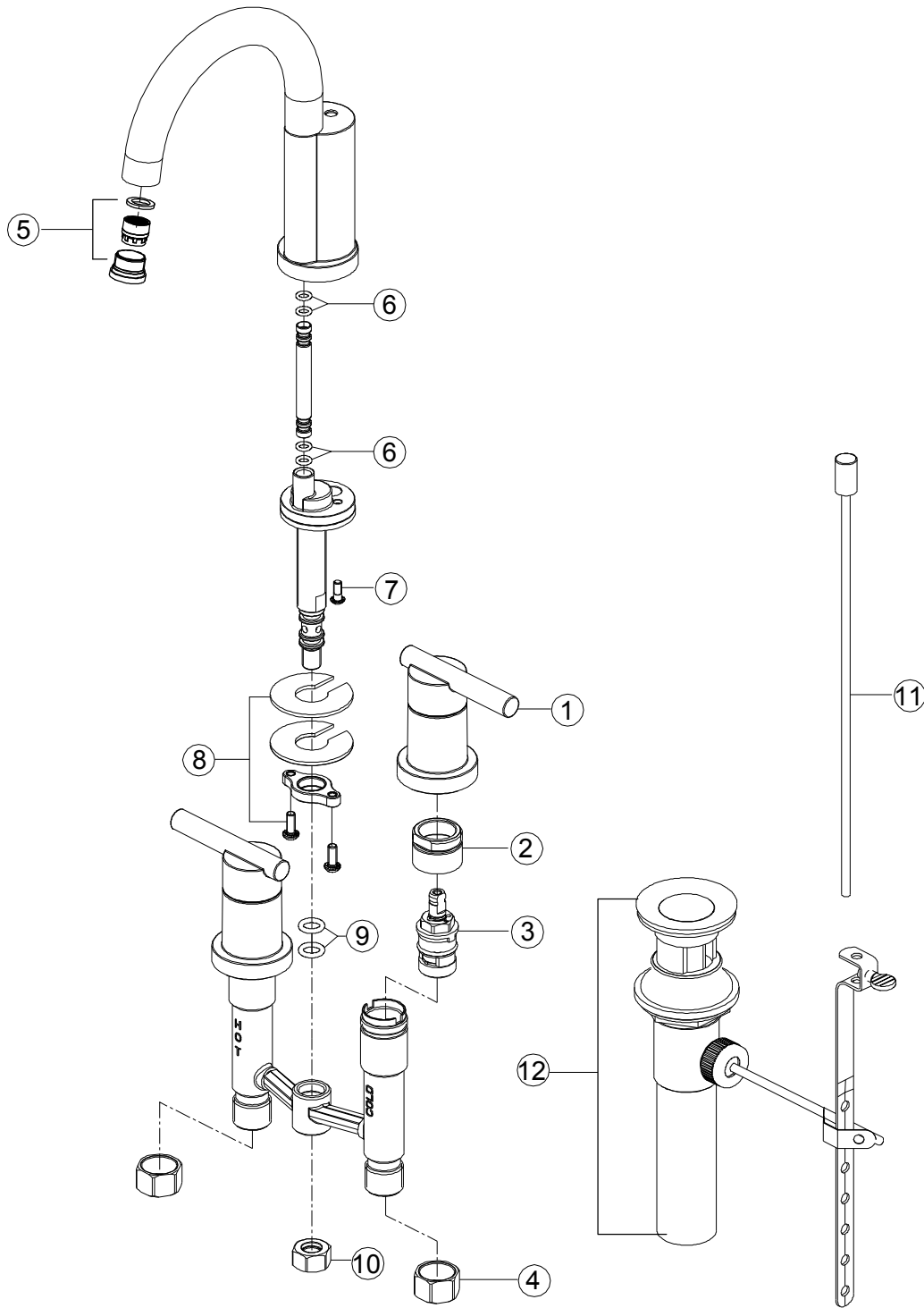


10. Attach horizontal rod (1) to strap (2) using clip (3). Insert lift rod (4) into strap and tighten screw (5). Connect assembly to drain (6).



11. Important: After installation is completed, remove aerator. Turn on water supply and allow both hot and cold water to run for at least one minute each. While water is running, check for leaks. Replace aerator.

Parts List



MODEL NO. 120331LF			
NO.	PART DESCRIPTION	PART NO.	QTY.
1	Handle Assembly	1	1
2	Bonnet Nuts	2	1
3	Cartridge(H)	3	1
3	Cartridge(C)	4	1
4	Coupling Nuts	4CP308	2
5	Aerator	178	1
6	O-Rings	7	4
7	Screws	8	2
8	Mounting Kit	9	1
9	O-Rings	10	2
10	Nut	11	1
11	Lift Rod&Lift Knob	12	1
12	Brass Pop-Up	124020	1

MODEL NO. 120332LF			
NO.	PART DESCRIPTION	PART NO.	QTY.
1	Handle Assembly	179	1
2	Bonnet Nuts	2	1
3	Cartridge(H)	3	1
3	Cartridge(C)	4	1
4	Coupling Nuts	4CP308	2
5	Aerator	180	1
6	O-Rings	7	4
7	Screws	8	2
8	Mounting Kit	9	1
9	O-Rings	10	2
10	Nut	11	1
11	Lift Rod&Lift Knob	13	1
12	Brass Pop-Up	124011	1