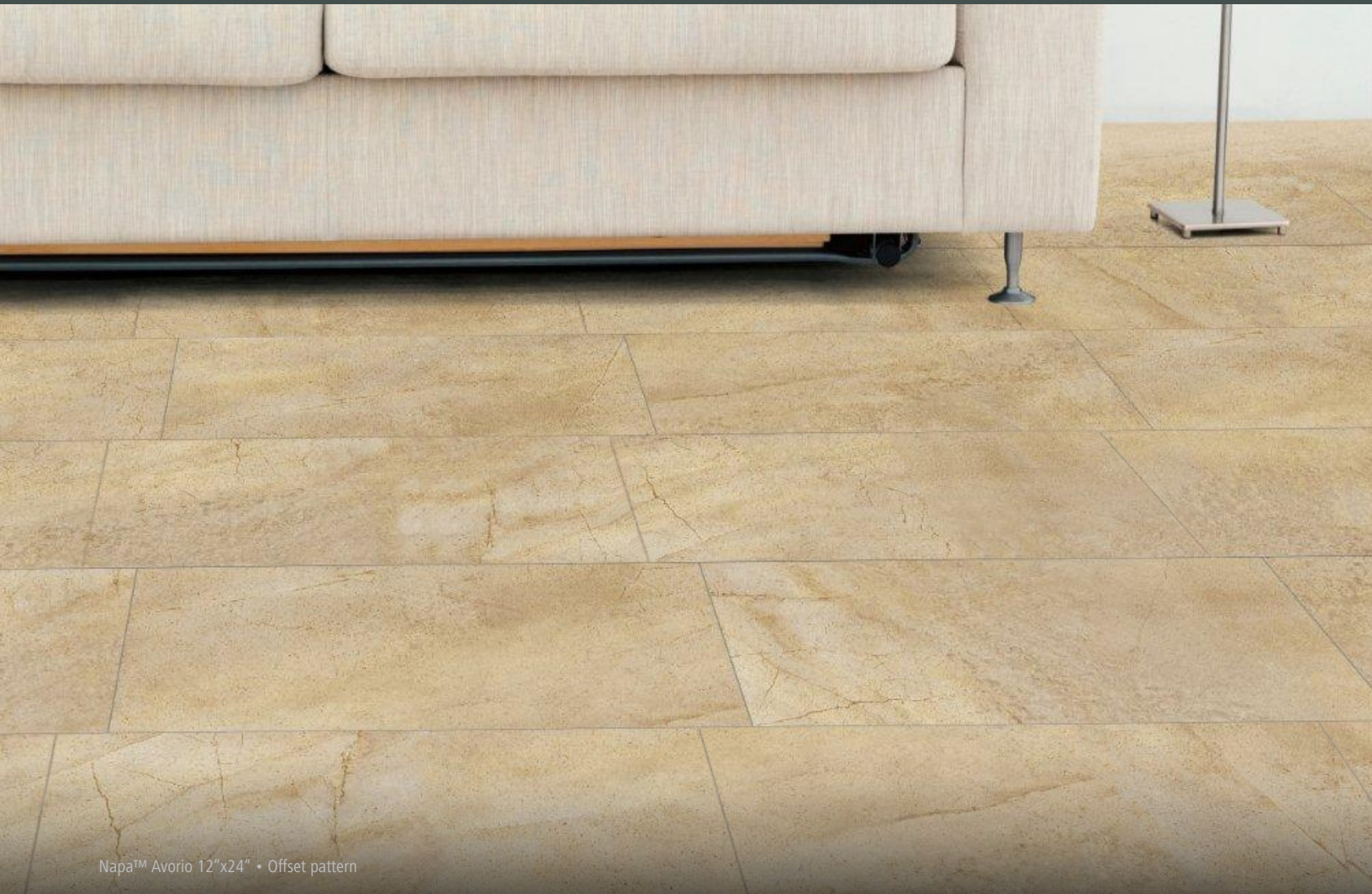


NAPA™

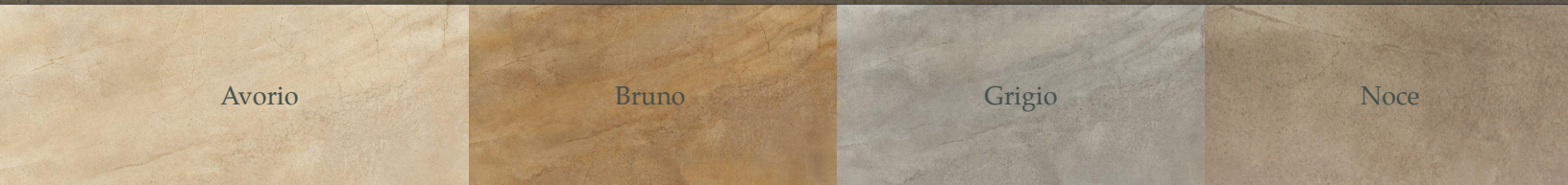
4 Colors

3 Sizes

5/16" Thickness



Napa™ Avorio 12"x24" • Offset pattern



Avorio

Bruno

Grigio

Noce

With colors reminiscent of those of the earth and the sky, Napa™ hearkens back to Mother Nature for its inspiration, as showcased in Northern California's charming Napa™ Valley region.

The intricacy of Napa™'s stone looking graphic design, and the delicacy of its matte finish prove that subtle detail is possible to recreate in a material as durable, and low maintenance as glazed porcelain tile.

Napa™ is an eco friendly flooring product and has a presence of at least 5% pre-consumer recycled content including mud and unfired material.

GLAZED PORCELAIN



Color shade variation



Suggested patterns. Diamond, Grid, Offset

Grout joint recommendation. 3/16"

Technical specifications

TEST	ASTM #	RESULTS
Abrasion Resistance	C1027	III
Breaking Strength	C648	≥ 350
Chemical Resistance	C650	PASS
Water Absorption	C373	≤ .5%
Coefficient of Friction	C1028	Dry ≥ .80 Wet ≥ .70
Freeze-Thaw Cycling	C1026	PASS
Scratch Hardness	MOHS	7
Recycled Content 5% Pre-Consumer		



18"x18"



12"x24"



12"x12"



GLAZED PORCELAIN

Avorio



12"x24"



18"x18"



12"x12"

Bruno



12"x24"

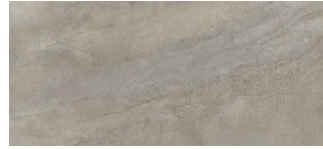


18"x18"



12"x12"

Grigio



12"x24"



18"x18"



12"x12"

Noce



12"x24"



18"x18"



12"x12"



Textured surface

TRIMS



Floor SBN 3"x12"



www.emser.com