

IMAGE™

18 Colors

6 Blends

1/4" Thickness

18 Mosaics



The fashionable Image™ glass mosaic series features a broad spectrum of fresh and invigorating color. Its extensive color pallet is comprised of eighteen attractive colors and six unique blends, all in a shimmering gloss finish! Image is available in 1/2"x1/2" size and is mesh backed for easy installation.

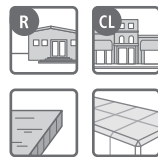
This series is suitable for both interior and exterior residential and commercial wall and floor application. Strong and durable, Image™ is suitable for use in high traffic areas, and it is also suitable use in pools as it is both chemically resistant and weather resistant. Its colors will not fade.

Approved Substrate Surfaces:

Fully cured concrete substrate
Properly installed cement backerboard

Do not install glass tile on: Particleboard, Chipboard, Masonite, Press wood, Plywood, Asbestos boards

GLASS WALL TILE



Color shade variation



Suggested patterns. Grid

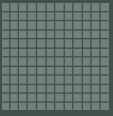
Grout joint recommendation. 3/16"

Special notes.

Appropriate for interior walls, exterior walls and backsplashes in non-freezing temperatures. Not recommended for countertop or floor use. Always follow proper installation methods. Installing glass tile involves some basic procedures that differ from installing ceramic or stone tile. Following these procedures will prevent simple mistakes that could result in the failure of the installation.

*Make sure that glass tile is installed over the proper substrate. This is one of the most important factors in ensuring a good installation. When cutting glass, it is recommended to use a supreme diamond blade designed for chip free cutting of glass (wet only).

To avoid adversely affecting the color of glass tile, white thin set is required for all installations. Glass tile must have a minimum of 1/8" grout joint and should not be butt set. To ensure adequate coverage and full contact to the tile it is recommended to lightly back butter the tile. Back buttering is required for semi-transparent glass tile. Use a glass cleaner and a soft lint free cloth for cleaning glass tile. To remove soap scum or water deposits, use a minimally abrasive cleanser and soft bristle brush.



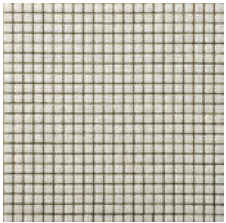
1/2" x 1/2" on
12" x 12" mesh



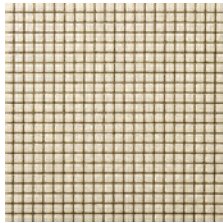
GLASS WALL TILE

MOSAICS (GLOSS FINISH)

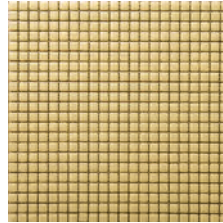
Air



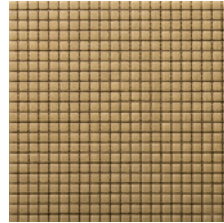
Appearance



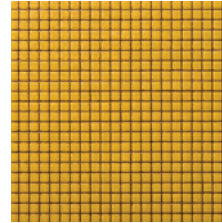
Aspect



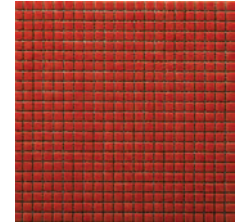
Aura



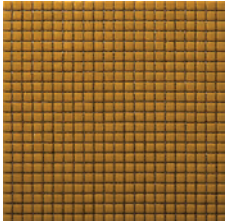
Concept



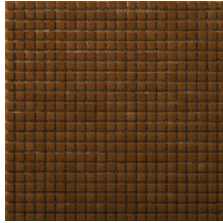
Drawing



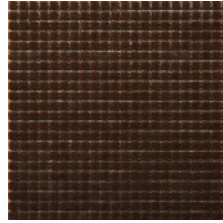
Equal



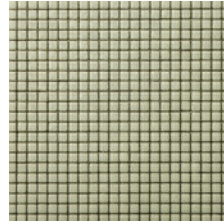
Expression



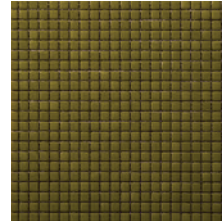
Figure



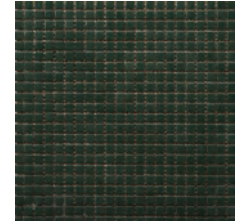
Icon



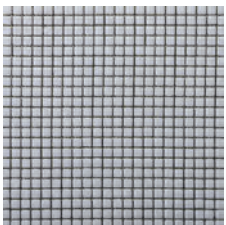
Idea



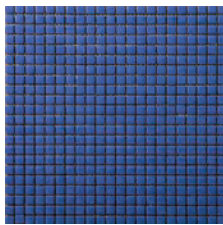
Illustration



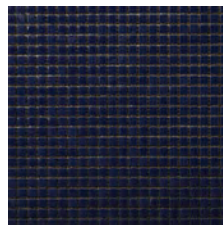
Impression



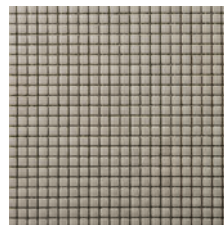
Likeness



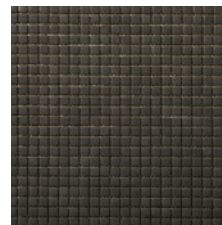
Look



Match



Notion

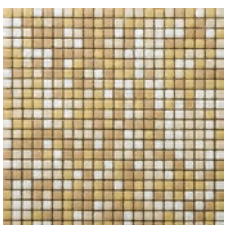


Persona

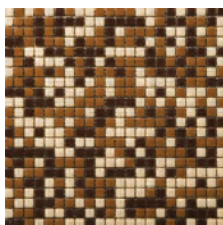


MOSAICS BLENDS (GLOSS FINISH)

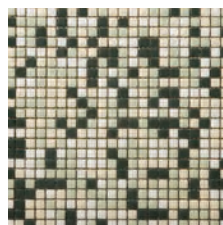
Picture



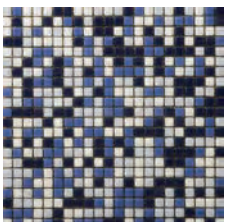
Reflection



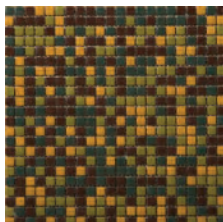
Representation



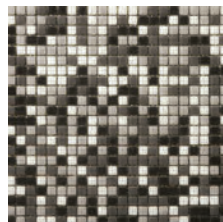
Semblance



View



Vision



+ Textured surface



Follow us on facebook & twitter

For additional questions regarding this series or to request a sample, please contact your Emser Tile Sales Representative or go online at www.emser.com