



EXECUTIVE ELECTROL®

Automatic Electric Projection Screen Model

SPECIFICATION DATA

DA-LITE SCREEN COMPANY, INC.
 3100 North Detroit Street
 Post Office Box 137
 Warsaw, Indiana 46581-0137
 Phone: 574-267-8101
 800-622-3737
 Fax: 574-267-7804
 Toll Free Fax: 877-325-4832
 www.da-lite.com
 e-mail: info@da-lite.com

SUGGESTED SPECIFICATIONS: _____ projection screen(s), _____ (H) x _____ (W), electrically operated 120 volt AC (60 Hz) not more than 2.2 amp. Three wire quick reversal motor especially designed for the purpose, to be ball bearing and oiled for life. With automatic thermal overload cut-out and integral interlocking gears. To have pre-set but accessible limit switches to automatically stop screen surface in the "down" position. Stop action to be positive to prevent coasting. The roller to be of rigid metal at least 3" in diameter (to be used on screens 12' and under in width) or 5³/₄" in diameter (on screens over 12' in width). Roller to be mounted on two heavy duty brackets equipped with self-aligning bearings. Screen surface to be flame retardant and mildew resistant fiberglass with black masking borders standard. Case to be of wood, with double top for extra rigidity and strength. Motor compartment to be metal lined. A section of the bottom of the case shall be equipped with hinges and connected to the drive mechanism so that it opens and closes automatically with the lowering and raising of the screen surface. The door will lift to the closed position where a micro switch shall cut off the electrical current to the motor. Balance of the bottom panel shall be pegged to manual opening to provide access. Hinges shall be mounted to allow matching of the bottom panel to the ceiling. **Specify Type 1 and 2 or Type 3 hinge, as required.** Case to be furnished with a black primer coat, ready to accept final finish by others. To be complete with 3 position control switch with cover plate. Recessed installation requires access to motor. Screen shall be listed by Underwriters' Laboratories and CSA.



Matte White: Seamless in all standard sizes.

High Power®: Available in sizes up to 9' x 12'. Horizontal seam required when both dimensions exceed 6'.

SQUARE FORMAT DIMENSIONS (screens with ^ have 2" standard black drop at top)

Sizes		*Overall Length of Case		Approx. Ship. Wt.	
H x W	Cm	In.	Cm	Lbs.	Kg
50" x 50"	127 x 127	76 ¹ / ₂ "	194	144	65.3
60" x 60"	152 x 152	86 ¹ / ₂ "	220	154	69.9
70" x 70"	178 x 178	96 ¹ / ₂ "	245	164	74.4
84" x 84"	213 x 213	110 ¹ / ₂ "	281	184	83.5
6' x 8'^^	183 x 244	122 ¹ / ₂ "	311	209	94.8
8' x 8'	244 x 244	122 ¹ / ₂ "	311	211	95.7
7' x 9'^^	213 x 274	134 ¹ / ₂ "	342	234	106.1
9' x 9'^^	274 x 274	134 ¹ / ₂ "	342	237	107.5
8' x 10'^^	244 x 305	146 ¹ / ₂ "	372	260	117.9
10' x 10'^^	305 x 305	146 ¹ / ₂ "	372	263	119.3
9' x 12'^^	274 x 366	170 ¹ / ₂ "	433	311	141.1
12' x 12'	366 x 366	170 ¹ / ₂ "	433	316	143.3
10'6" x 14'^^	320 x 427	194 ¹ / ₂ "	494	403	182.8
14' x 14'	427 x 427	194 ¹ / ₂ "	494	410	186.0
12' x 16'^^	366 x 488	218 ¹ / ₂ "	555	459	208.7
16' x 16'	488 x 488	218 ¹ / ₂ "	555	469	212.7

*Add 7" to overall case length for mounting brackets.

Overall case length dimensions ±1/4".

Specifications subject to change without notice.

Detail dimensional drawings, wiring diagrams and installation instructions available upon request.

Custom formats and sizes available upon request.

WHEN ORDERING, MARK APPROPRIATE SELECTIONS:

Select method of installation:

- Type 1 and 2 - Offset or Flush Mounting
- Type 3 - Extended Mounting

Select viewing surface:

- Matte White
- High Power®
- Greenguard® and Greenguard® Children and Schools Certified.

Options:

- Extra Drop available to lower picture area more than normal. Specify total drop at top _____ (black or white) or at bottom _____ (black or white). 20' maximum total surface height including picture area.
- Single motor low voltage control (LVC) - external.
- Wireless Remote Control for LVC.
 - Radio Frequency Remote
 - Radio Frequency Range Extender available
 - Infrared Remote
- Key Locking Cover Plate for 120V or LVC Switch.
- Key Operated Switch for 120V only (NOTE: cannot be used with LVC).
- No Borders (Black masking borders standard).
- 220 Volt (50 Hz) Motor.
- Video Projector Interface Control - external.
- External SCB-100 - RS-232 Serial Control Board
 - NET-100 Ethernet-Serial Adapter
- White box (black standard).
- White doors (brushed aluminum standard).

Project: _____

Architect: _____

Phone: _____

Contractor: _____

Phone: _____

Supervisor: _____

Phone: _____

Supplier: _____

Date: _____

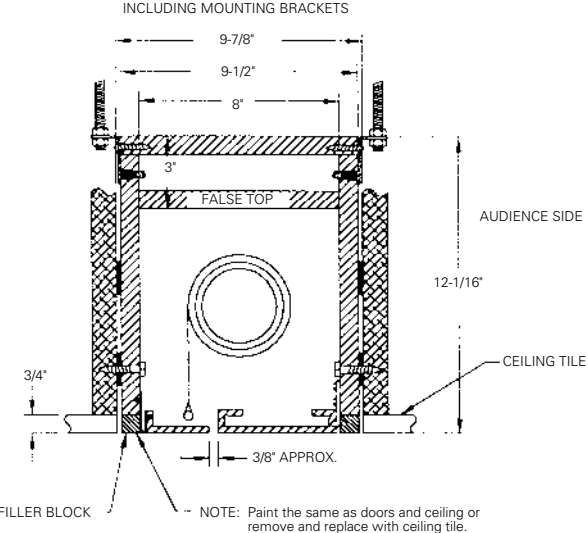
Revised: _____

EXECUTIVE ELECTROL®

SUGGESTED METHODS OF INSTALLATION

TYPE 1 AND 2

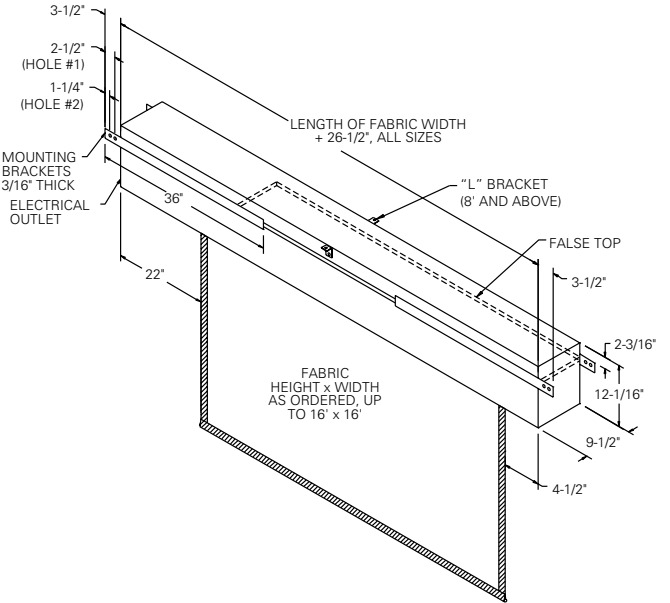
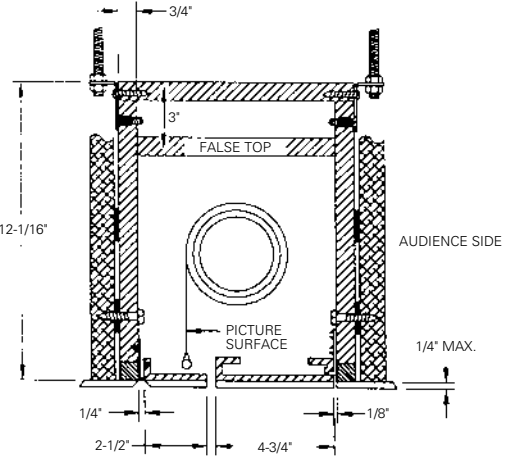
Offset mounting, recessed above ceiling, for plaster, dry wall or paneling. Door painted same finish as ceiling.



TYPE 1 AND 2

Allow 1/8" min. clearance all around surface door.

Flush mounting, recessed above ceiling. For use with 1/4" max. paneling or installation in existing ceiling using molding around door.



TYPE 3

Allow 1/4" min. clearance all around surface door.

Extended mounting, recessed above ceiling. For use with acoustical or other ceiling tile 3/4" thick laid over door.

