

---

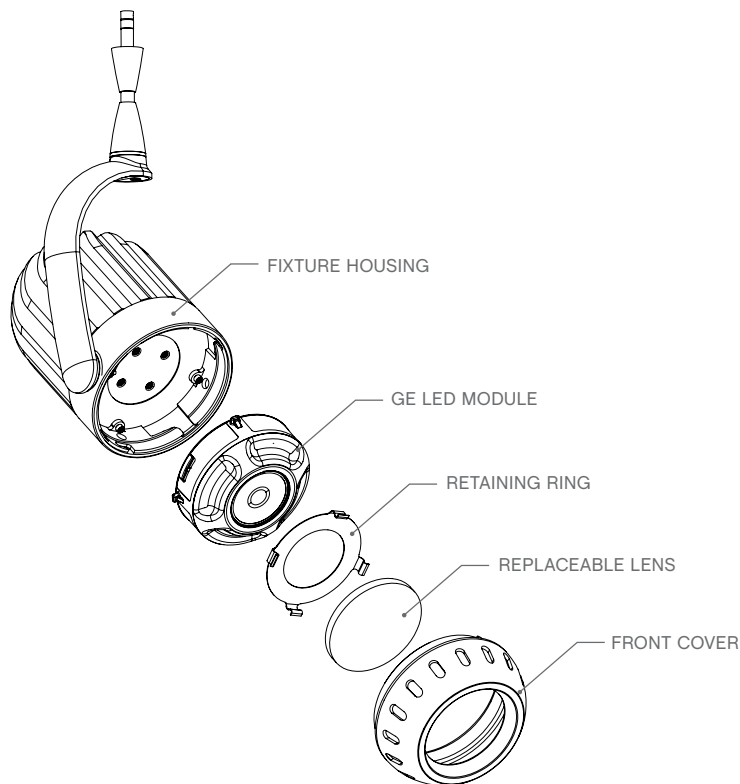
**IMPORTANT SAFETY INSTRUCTIONS**

TO REDUCE THE RISK OF FIRE, ELECTRICAL SHOCK, OR INJURY TO PERSON:

- Use this fixture indoors only
- Use only with Journée systems
- Use only Journée replacement parts
- Make sure all connections are tight
- Do not look directly into the light source
- Do not exceed maximum wattage load of specified remote transformer
- Never place the fixture near flammable material
- Always disconnect electrical power before adding or changing the configuration of the track
- Always disconnect electrical power before removing front cover.
- Do not touch the fixture while it is on. Certain surfaces may be HOT.
- This product suitable for dry locations only.

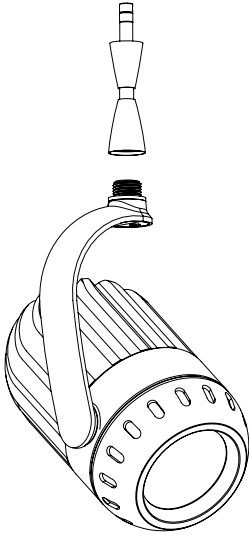
**SAVE THESE INSTRUCTIONS**

---

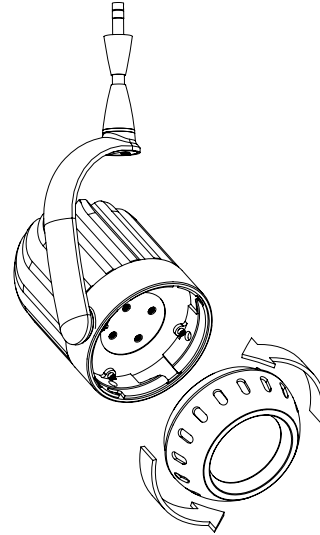




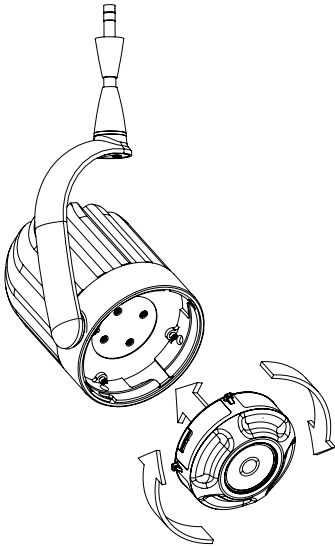
**1)** Thread the Modular stem onto the Azara.



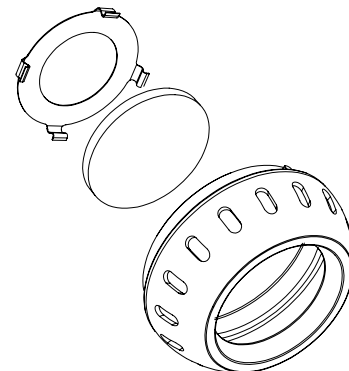
**2)** To remove cover, twist counterclockwise.



**3)** Insert GE Infusion™ LED Module, and twist clockwise.



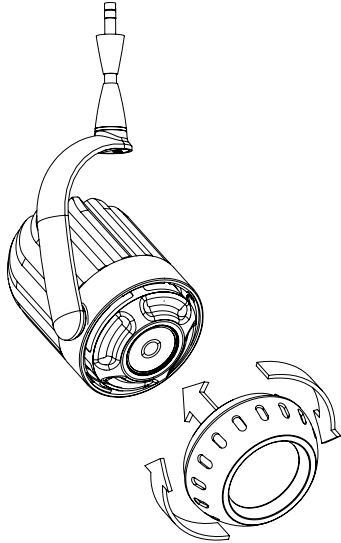
**4)** If changing lens to prism lens, colored lens or louver, snap out the retaining ring, then place lens into front cover and snap retaining ring back into place.



**SAVE THESE INSTRUCTIONS**



- 5)** To replace front cover, insert cover and twist clockwise.



**SAVE THESE INSTRUCTIONS**

[WWW.JOURNEELIGHTING.COM](http://WWW.JOURNEELIGHTING.COM)

TELEPHONE 800-886-1880 – FAX 800-886-1881

4607 Lakeview Canyon Rd #500 - Westlake Village, CA 91361