

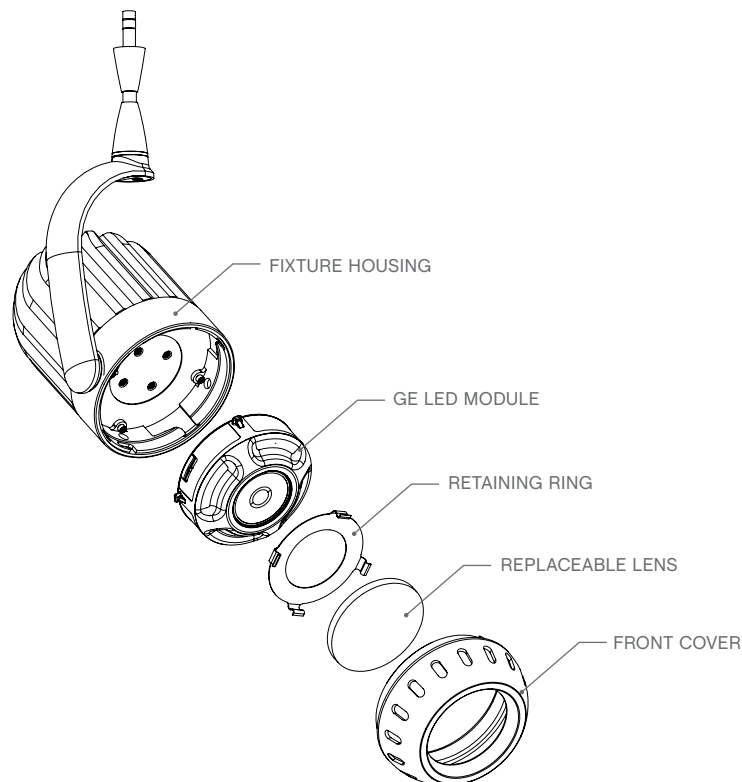


IMPORTANT SAFETY INSTRUCTIONS

TO REDUCE THE RISK OF FIRE, ELECTRICAL SHOCK, OR INJURY TO PERSON:

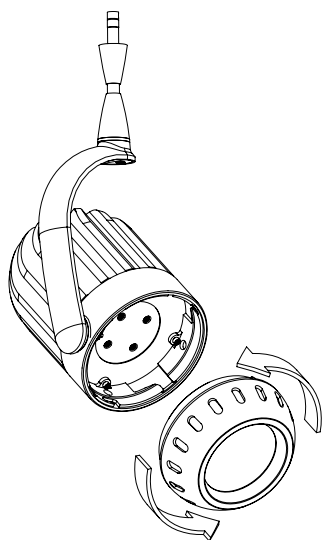
- Use this fixture indoors only
- Use only with Journée systems
- Use only Journée replacement parts
- Make sure all connections are tight
- Do not look directly into the light source
- Do not exceed maximum wattage load of specified remote transformer
- Never place the fixture near flammable material
- Always disconnect electrical power before adding or changing the configuration of the track
- Always disconnect electrical power before removing front cover.
- Do not touch the fixture while it is on. Certain surfaces may be HOT.
- This product suitable for dry locations only.

SAVE THESE INSTRUCTIONS

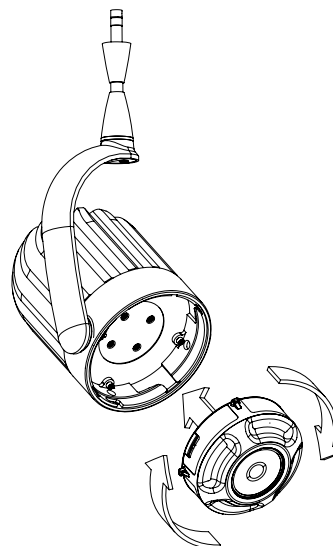




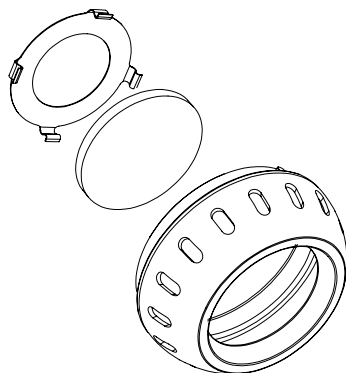
1) To remove cover, twist counterclockwise.



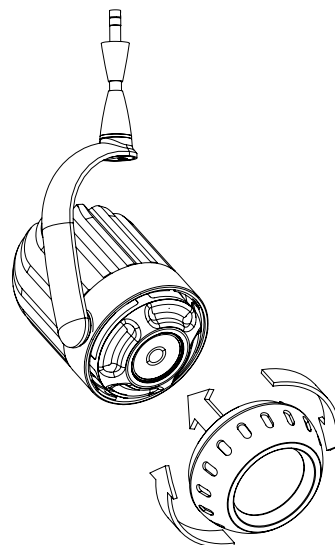
2) Insert GE LED Module, and twist clockwise.



3) If changing lenses to prism lenses, colored lenses or louvers, snap out the retaining ring, then place lens into front cover and snap retaining ring back into place.



4) To replace front cover, insert cover and twist clockwise.



SAVE THESE INSTRUCTIONS

WWW.JOURNEELIGHTING.COM

TELEPHONE 800-886-1880 - FAX 800-886-1881

4607 Lakeview Canyon Rd #500 - Westlake Village, CA 91361