



M-301 Duo

FEATURES

- ❖ Factory tested
- ❖ Left/Right Models Available
- ❖ 3KW Self-Cleaning Steam Generator with controls
- ❖ 3KW Sauna Heater with controls
- ❖ Available in White
- ❖ Polished Finish
- ❖ Phone & FM Radio
- ❖ Auxiliary RCA input for MP3, iPod, CD
- ❖ Steam Aromatherapy Cup
- ❖ Accessory Rack
- ❖ Mirror
- ❖ Foot Massage
- ❖ Body Massage Jets
- ❖ Rainfall Shower
- ❖ Hand-held Shower w/ Height-Adjustable Bracket
- ❖ Molded Seat
- ❖ Pressure Balance Valve (optional extra)
- ❖ Thermostatic Valve
- ❖ Adjustable Steam Time & Temperature Settings
- ❖ Control Panel with Remote
- ❖ Sliding Doors
- ❖ Circulation Fan
- ❖ Mood Lighting

TECHNICAL INFORMATION

- **Materials:** Acrylic, Tempered Glass, cypress wood
- **Power Supply:** 220V/-2 separate circuits
- **Steam Ready:** 2-5 MIN
- **Sauna Ready:** 5-10 MIN
- **Dimensions:** 64 x 42 x 86 IN

ELECTRICAL INFORMATION

- 220volt- 20 amp GFCI breakers needed for both heaters
- 2 separate dedicated 12-2 wires - 1 for steam and 1 for sauna (line 1, line 2, and ground)
- There is a length of wire from the control box supplied to connect to power source.
 - **Note:** THE SAUNA CONTROL BOX MUST BE INSTALLED OUTSIDE OF THE UNIT. To connect the sauna system you will need a length of wire from one of the two dedicated power lines to the Sauna Control box and a length of wire from the Sauna Control Box to the Sauna Box inside the sauna room section of the M-301 Dual Steam Sauna unit. Wire is not included.

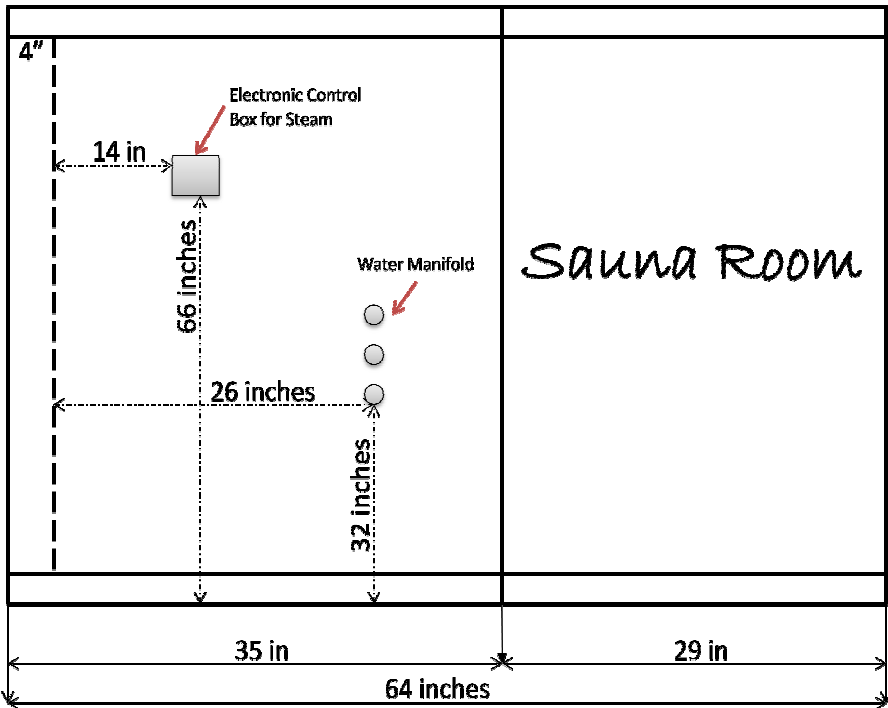
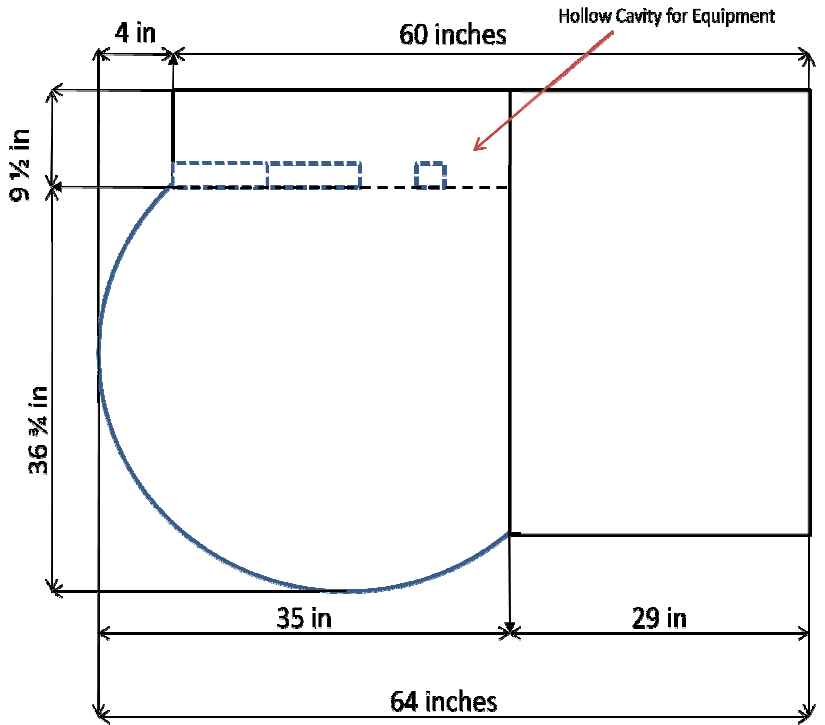
PLUMBING REQUIREMENTS

- The unit is equipped with hot and cold, metal braided ½ inch water supply hose with ½ national pipe thread.
- Need to install hot and cold shutoffs with ½ -male national pipe thread (not included).
- Supply hoses are to connect from the faucet manifold on the unit to the shutoff valves.
- All water jet features are pre plumbed with reinforced braided flexible supply hose
- All fixtures and fittings must be checked for tightness as they may have been loosened during transport

GENERAL INFORMATION

- Units come broken down in panels and are assembled with screws, nuts and bolts on site. All seams to be caulked with 100% silicone at room temperature (no latex caulking)
- **Note:** All shower bases need to be leveled in its final resting position, mark the placement, then pull base out and begin assembly. Access panel area recommended.
- It is best to have base in hand for drain location. It is advised to have base onsite before preparing drain location. Access panel area recommended. **Manufacturer reserves the right to change specs or features at anytime. Please check to confirm details. 1-866-783-2661**

M-301-R



Note: In a left hand model, everything is reversed.