

# Instructions

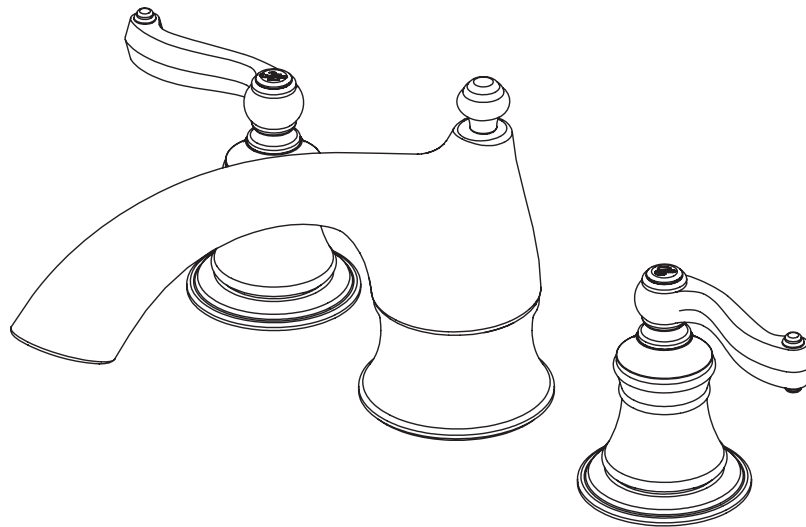
50-82011-CH – Chrome  
50-82011-BN – PVD Brushed Nickel



## Certifications



## Two Handle Roman Tub Trim Kit



\*Image may vary slightly from actual product

### Tools Required

Adjustable Wrench  
Groove Joint Pliers  
Pipe Wrench  
Phillips Screwdriver  
Pipe Tape or pipe thread compound



### Safety Tips

If you solder the joints during installation of the faucet, the seats, cartridges, and washers must be removed before using a flame or the warranty will be voided on these parts.

Protect your eyes with safety glasses when cutting or soldering water supply lines.

Cover the sink drain to avoid losing parts.

### Things You May Need

Installations may vary depending on how the previous faucet was installed. Supplies necessary for the installation of your faucet are not all included; however, they are available wherever plumbing supplies are sold.

### Maintenance

Your new Roman tub faucet is designed for years of trouble-free performance.

Keep it looking new by cleaning it periodically with a soft cloth. Avoid abrasive cleaners, steel wool, and harsh chemicals as these will dull the finish and void your warranty.

### Important Points

Prior to beginning installation, turn off the hot and cold water lines, then turn on the old faucet to release built-up pressure. When installing your new faucet, turn the connector nuts finger tight, then use one wrench to hold the fitting and a second wrench to tighten the nut. Connections that are too tight will reduce the integrity of the system.

Wrap all threaded connections with PTFE pipe tape available at your local hardware or plumbing supply store. Always wrap in a clock-wise direction.

### Contact Us

For Customer Service please call 877-319-3757, or go to [homewerkswww.com](http://homewerkswww.com).

# Instructions

50-82011-CH – Chrome  
50-82011-BN – PVD Brushed Nickel



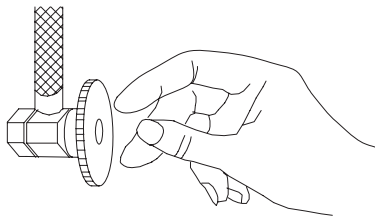
## Certifications



### Two Handle Roman Tub Trim Kit

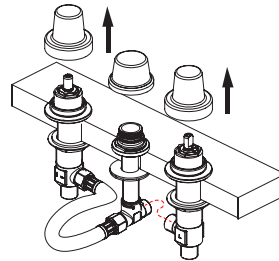
#### Preparation and Assembly

1



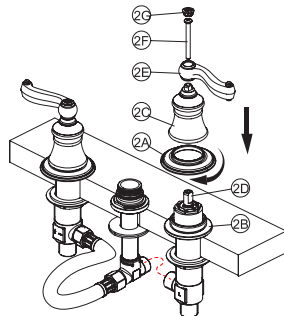
Locate water supply inlet and shut off water supply valve. These are usually found under the sink or near the water heater. Remove old faucet. Clean and dry sink surface area where new faucet will be mounted.

2



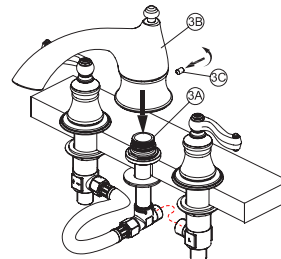
Take off the lid of the body assembly & lid of long shank.

3



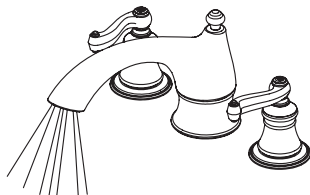
Place handle flange (2A) onto body flange (2B) in desired position, then place handle seat (2C) onto the valve stem (2D). Place handle (2E) onto seat (2C), then place screw (2F) through the socket on top of the handle and thread until handle is securely tight. Attach index (2G) onto the lever socket. Place the other handle assembly onto the other valve stem and install the same way.

4



Place spout assembly (3B) onto shank (3A) in desired position, then place set screw (3C) through the socket towards the spout assembly and thread until spout is securely tight.

5



Turn on water supply. Be sure to allow water to run into tub while checking for leaks. This will allow air to escape that may have developed during installation.

# Troubleshooting

50-82011-CH – Chrome

50-82011-BN – PVD Brushed Nickel



## Certifications



### Two Handle Roman Tub Trim Kit

#### Troubleshooting

**PROBLEM:** Leaks underneath handle.

**CAUSE:** Bonnet has come loose or O-ring on cartridge is dirty or twisted.

**ACTION:**

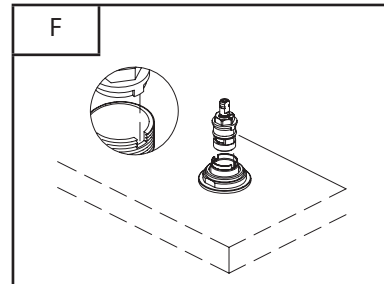
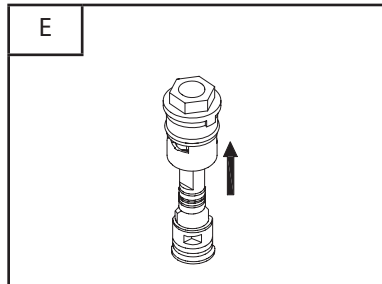
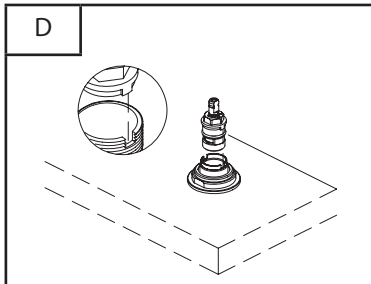
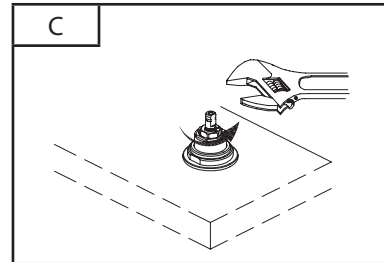
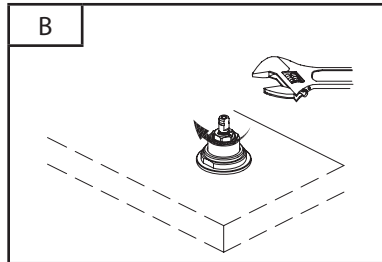
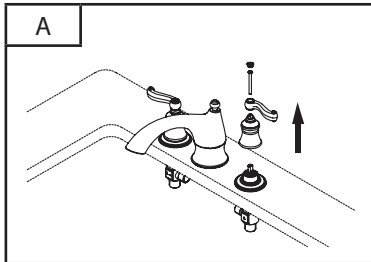
1. Move the handle to the off position. Remove index button. Unscrew the handle screw and remove the handle (Diagram A).
2. Tighten the bonnet by turning it clockwise (Diagram B). Move the cartridge stem to the on position. The leak should stop draining out from around the cartridge stem.
3. If the leak does not stop, shut off the water supply. Remove the bonnet by turning it counter-clockwise. Lift out the cartridge valve (Diagram C). Inspect the larger O-ring on the cartridge bonnet and the smaller O-ring on the cartridge stem. Remove any debris from the O-rings. If either O-ring is twisted, straighten it out. If either O-ring is damaged, replace the cartridge by calling customer service.
4. Position the cartridge back into the faucet body (Diagram D). Make sure the ridges on the two sides of the cartridge bonnet fit into the grooves on the two sides of the faucet body. Tightly screw the bonnet onto the faucet body.
5. Re-install the handle.

**PROBLEM:** Water does not completely shut off.

**CAUSE:** Rubber valve seat is dirty, stuck, or broken.

**ACTION:**

1. Shut off the cold water supply. If leak stops, the problem is on the cold side. If leak continues, the problem is on the hot side. Shut off the hot water supply to determine if both the cold and hot sides have a problem.
2. Remove the handle on the problem side. Loosen the bonnet by turning it counter-clockwise (Diagram E). Lift out the cartridge assembly.
3. Inspect the rubber valve seat in the faucet body. If there is debris or brass scrap on the surface of the seat, remove it. If the rubber seat is stuck tightly in the water inlet hole, push it gently with a fingertip so that it moves up and down smoothly. If the rubber valve seat is worn out or broken, replace the cartridge by calling customer service.
4. Replace the cartridge into the faucet body. Make sure that the ridges on the two sides of the cartridge bonnet fit into the grooves on the two sides of the faucet body (Diagram F). Tightly screw the bonnet onto the faucet body.
5. Re-install the handle.



# Specifications



## Certifications

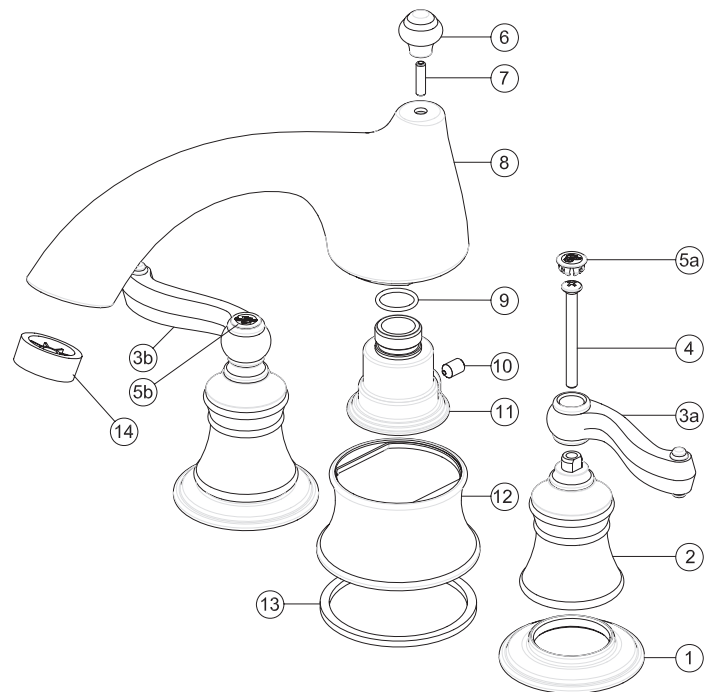


**50-82011-CH – Chrome**  
**50-82011-BN – PVD Brushed Nickel**

### Physical Characteristics

- Description: 2 handle Roman tub faucet with 6" - 12" center distance, brass waterways and ceramic cartridges
- Trim only
- Roman tub filler
- Solid brass spout
- Max. Flow Rate: 2.2 GPM (8.3 LPM)
- 3-hole installation

No.	Part Description	Material
1	Flange	Brass C37700
2	Handle seat	Brass C37700
3A	Handle - hot	
3B	Handle - cold	
4	Screw	SUS302/304
5A	Index - hot	Brass C37700
5B	Index - cold	Brass C37700
6	Ornate cap	Brass C37700
7	Screw	S.S304
8	Spout	Brass C37700
9	O-ring	N7008F
10	Set screw	
11	Connector	
12	Spout seat	
13	Washer	Steel Q235A
14	Aerator	-



# Rough-In

50-82011-CH – Chrome

50-82011-BN – PVD Brushed Nickel



## Certifications



### Two Handle Roman Tub Trim Kit

