

Cherub Mio Fountain Instructions

There are 5 pieces to your Cecilia fountain:

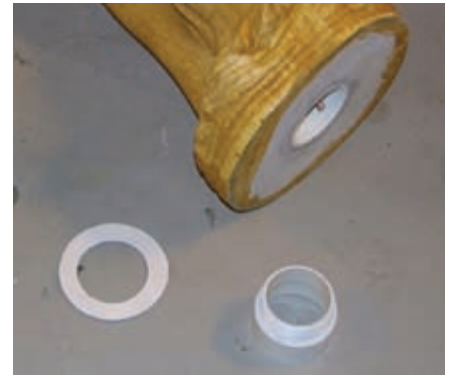
1. Fountain figure
2. Water basin
3. Access lid to the water basin
4. Pump
5. Tubing
6. PVC Washers
7. PVC Screw



Assembly instructions:

1. Account for all pieces before beginning assembly. Read instructions fully before beginning.
2. First lay your water basin down in the desired final location. *It is a good idea to have another person help you position the items. You do not want to move it after you complete set up. Scout a location carefully. There will be splash from the basin (about 3 feet). Be aware of what is surrounding the fountain.
3. The pump will be located inside the pedestal of the bowl. The power cord has been fed through the tube to the exterior of the fountain. Angle the cord as close to the outlet you intend to use as possible. Be careful not to lift the pump from the deepest part of the basin, directly in the center. Keeping the pump at the deepest point is crucial to your fountain's performance.
4. Carefully tip the main fountain figure on to the pedestal. *This may be a good time to have another person help you. Line up the figure so it fits on the center of the pedestal on the basin.
5. Locate the plastic screw and washers. These are the pieces that secure the main figure to the water basin. Reach inside the pump housing and attach the screw with a washer between the base of the fountain figure. Make sure it is tight. If the screw is not tight to the base the statue will not be stable. Place as many washers as needed between the screw and statue to make sure it is tight.
6. Your pump should have a plastic hose attached to it. The other end of the tube attaches to a copper tube in bottom of the figure from inside the basin pedestal.
7. Fill the fountain with about 5 gallons of water, or just enough to completely cover the pump. Do not cover the hole of the PVC-pipe the power cord is routed through. (Water could leak out.)
8. Locate the access lid to the water basin. Place the access lid on the pedestal to conceal the pump.
9. You may need an extension cord to reach your outlet from the original pump power cord. Once you plug the pump in it will be working. At this point your fountain assembly should be complete.

*If you experience problems check the pump. If you here a loud noise when the pump is engaged you probably have to add more water or reposition the pump to the lowest point. Be sure to clean the filter in the pump periodically throughout use. Remember to fully drain your fountain in the winter months.



PVC washer and screw assembly.



Copper fountain tube.



Securing the PVC bolt and washer.



Inside of pedestal with PVC screw attached.