



Exclusively Designed

INTERNATIONALLY RECOGNIZED™

PRODUCT SPECIFICATIONS

Applies to all model numbers:
MDVH(F)-1821-(MP/OK/CH/ES/WN)

Product Features:

- *Includes Rev-A-Shelf HRV-1520-S-CR*
- Hardwood Veneer
- Available in Maple, Golden Oak, Traditional Cherry, Espresso and Walnut finishes
- Soft-close door hinges



This Product Complies With:

- CARB 93120 Phase II
- ADEX 2007 Design Journal Gold Award Winner

- D'VONTZ® MDV STRETCHER REQUIRED

Measurements:

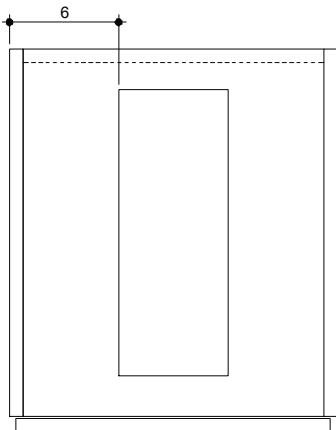
- Height: 25-1/2" (64.8 cm)
- Width: 18" (45.7 cm)
- Depth: 21" (53.3 cm)

Recommended Accessories:

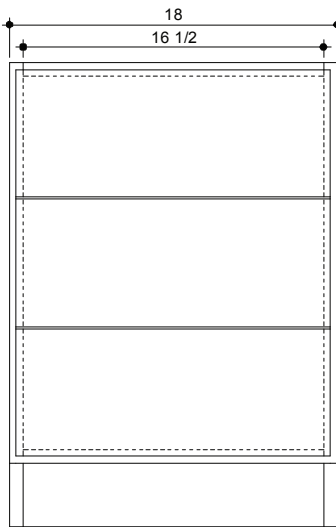
- D'Vontz® MDV Linen Tower

ROUGH IN & PRODUCT DIMENSIONS

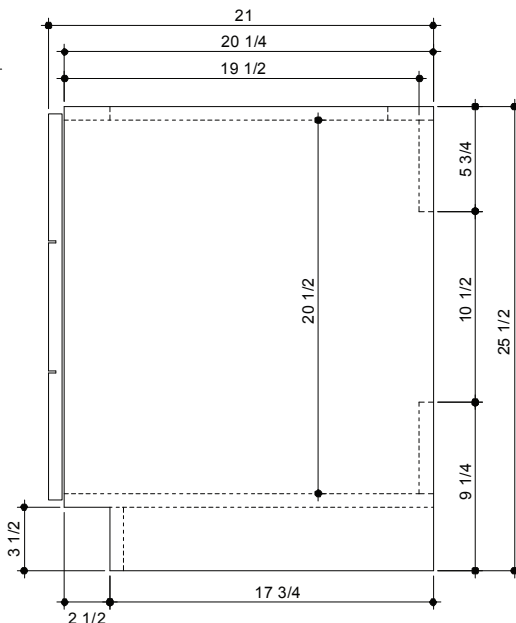
PLAN VIEW
MDVH-1821-xx



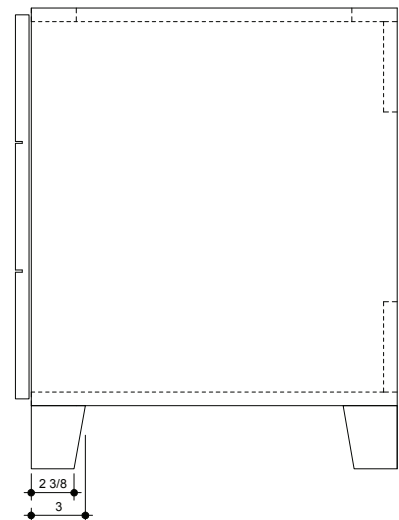
* The MDVH hamper base unit includes a fully installed Rev-A-Shelf hamper, model number HRV-1520-S-CR *



FRONT VIEW



RIGHT VIEW



Please install this product according to the installation guide and all local building codes.