

# terra antica™ porcelain

7834 C. F. Hawn Freeway  
Dallas, Texas 75217  
214-398-1411 800-933-TILE



18" x 18" Field Tile  
(Nominal 17-7/8" x 17-7/8")  
(Nominal 45.0 cm x 45.0 cm)  
1/4" Thick  
Square feet per carton: 15.26  
Pieces per carton: 7



12" x 12" Field Tile  
(Nominal 11-7/8" x 11-7/8")  
(Nominal 30.0 cm x 30.0 cm)  
1/4" Thick  
Square feet per carton: 14.53  
Pieces per carton: 15



6" x 6" Field Tile  
(Nominal 5-7/8" x 5-7/8")  
(Nominal 15.0 cm x 15.0 cm)  
1/4" Thick  
Square feet per carton: 10.76  
Pieces per carton: 44



6" x 6" Corner/Insert  
(Nominal 5-7/8" x 5-7/8")  
(Nominal 15.0 cm x 15.0 cm)  
1/4" Thick  
Pieces per carton: 4



6" x 12" Decorative Border  
(Nominal 5-7/8" x 11-7/8")  
(Nominal 15.0 cm x 30.0 cm)  
1/4" Thick  
Pieces per carton: 10



Grout joint recommendation: 3/16"

**Shade Variation:** (Random)

*Strong random shading is part of the natural beauty of this product. To achieve the maximum intended results, tile should be pulled from multiple cartons and placement decided upon prior to installation.*

## Application

	Residential	Light Commercial	Commercial
Floors	X	X	X
Walls	X	X	X
Counters	X	X	X
Backsplashes	X	X	X
Pool Linings	X	X	X

*Suitable for exterior floors and walls in freezing and non-freezing climates when proper installation methods are followed. Special care should be taken when grouting with dark pigmented colors. A grout release is recommended to prevent finely powdered pigments from lodging in the pores of the tile surface.*

## Test Results

	ASTM#	Result
Water Absorption	C373	<0.5%
Breaking Strength	C648	>437 lbs
Scratch Hardness	MOH's	8.5
Chemical Resistance	C650	Resistant
Coefficient of Friction	C1028	Wet: ≥0.60 Dry: ≥0.75
Abrasion Resistance	ISO 10545-7	4

## Abrasion Resistance Application Classifications ISO 10545-7:

- 1 Light Residential      2 Heavy Residential  
3 Light Commercial      4 Heavy Commercial

*Standing water and other contaminants create slippery conditions for any hard surface floor material. To avoid injuries, floor applications with exposure to these conditions require extra caution in product selection and product maintenance. Not for use on ramps. Manufactured in accordance with ANSI A137.1 standards.*

To view the complete collection of Daltile® products, visit our website at [www.daltile.com](http://www.daltile.com).



Oro TA01



Rosso TA02



Bruno TA03



Celeste/Grigio TA04



Oro TA01 Border



Rosso TA02 Border



Bruno TA03 Border



Celeste/Grigio TA04 Border



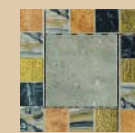
Oro TA01  
Deco Corner/Insert



Rosso TA02  
Deco Corner/Insert



Bruno TA03  
Deco Corner/Insert



Celeste/Grigio TA04  
Deco Corner/Insert

*The natural beauty of ceramic tile lies in its subtle variation of shades. Manufactured tiles may vary from tiles shown.*

## Trim

Type	Number	Size
<b>Bullnose</b>	S-435C9	3-1/2" x 12"
<b>Cove/Corner</b>	S-36C9T	6" x 12"
	SC-36C9T	1" x 6" (Out)

**Maintenance:** Routine maintenance will keep your tile looking new for years to come. Under normal situations, the tile can be cleaned using clear water with a neutral tile cleaner. *Always* follow-up with a rinse of clear water. No waxes or sealers are recommended for this product.

# terra antica™ porcelain

Photo features Terra Antica 12" x 12" and 6" x 6" Oro on floor. Wall features 6" x 6", 6" x 12" Border and 6" x 6" Deco Corner/Insert in Oro.

SSDTERRAN

(1/02)

© 2002, Dal-Tile Corporation

# terra antica™ porcelain

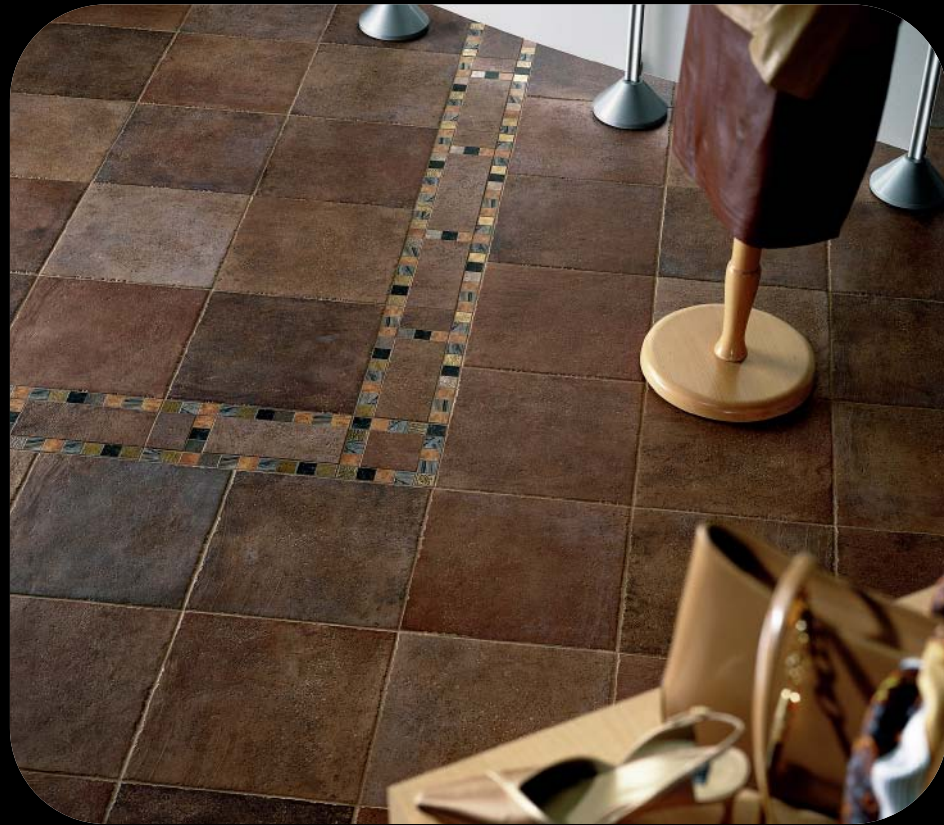
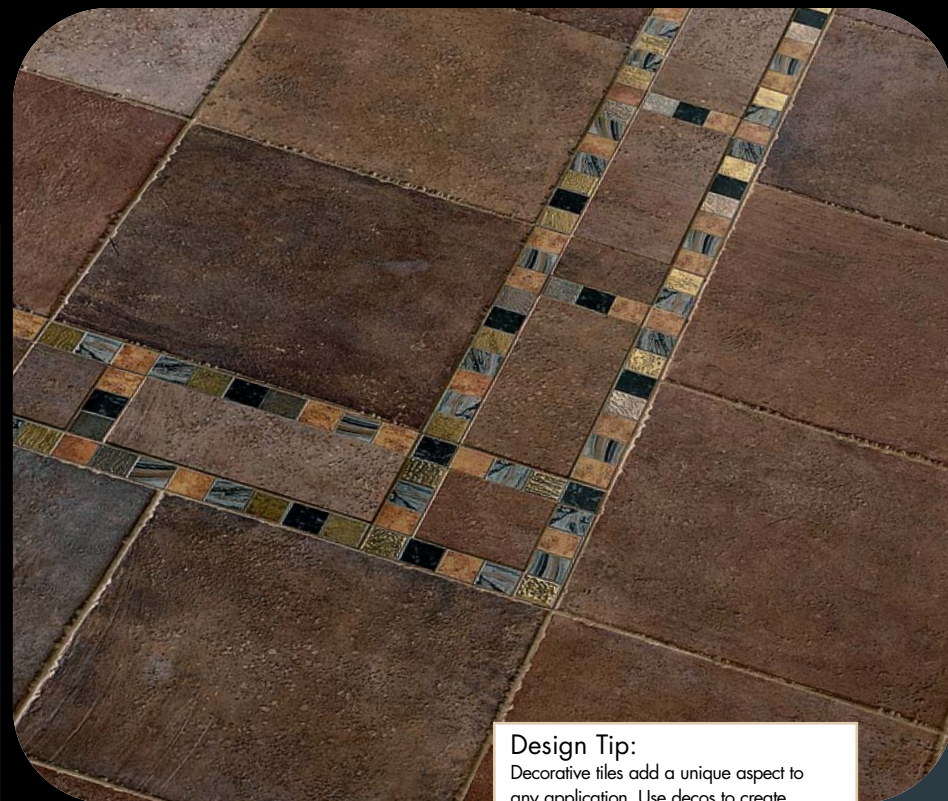


Photo features Terra Antica in 12" x 12" Bruno with Bruno Deco Border and Corner

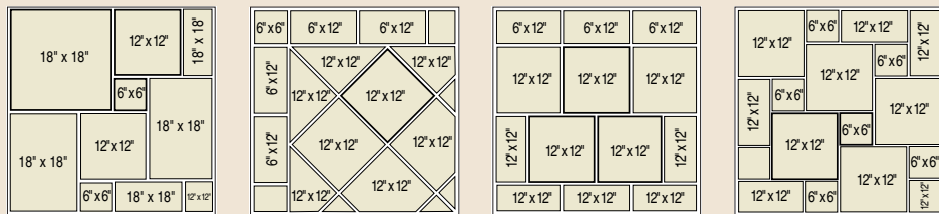


## Terra Antica™ Porcelain Tile

At first glance, Terra Antica is a stunning tile that emits a pure, Old World charm. Designed to simulate terra cotta but, upon further inspection, one can easily recognize the thoroughly modern design influences that are also at work. Random shading highlights this dazzling combination of textures and colors, making Terra Antica the perfect solution for both residential and commercial environments. It comes in four distinct colors, a variety of sizes and is enhanced by dramatic borders and corners with metallic insets. With an imported Mediterranean feel, Terra Antica brings a classic, yet modern look to floors, walls, countertops and more.

## Creative

### D E S I G N I D E A S



Modified Hopscotch

Diamond with Border

Brickwork

Hopscotch

Darker lines indicate pattern repeat

**Design Tip:**  
Decorative tiles add a unique aspect to any application. Use decos to create border designs on floors and walls. The possibilities are endless.



daltile®